

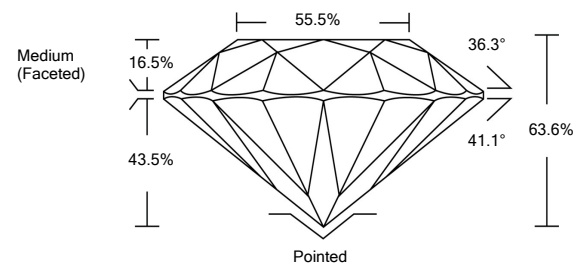


**ELECTRONIC COPY**

**LABORATORY GROWN DIAMOND REPORT**

LG529259183

**PROPORTIONS**



**GRADING SCALES**

|                             |                              |                             |                        |                   |           |   |
|-----------------------------|------------------------------|-----------------------------|------------------------|-------------------|-----------|---|
| COLOR GRADING SCALE         | CL                           | NC                          | FT                     | VL                | LT        |   |
|                             | COLORLESS D-F                | NEAR COLORLESS G-J          | FAINT K-M              | VERY LIGHT N-R    | LIGHT S-Z |   |
| CLARITY (10x) GRADING SCALE | FL                           | IF                          | VVS                    | VS                | SI        | I |
|                             | FLAWLESS INTERNALLY FLAWLESS | VERY VERY SLIGHTLY INCLUDED | VERY SLIGHTLY INCLUDED | SLIGHTLY INCLUDED | INCLUDED  |   |

May 18, 2022  
 IGI Report Number **LG529259183**  
 Description **LABORATORY GROWN DIAMOND**  
 Shape and Cutting Style **ROUND BRILLIANT**  
 Measurements **6.74 - 6.80 X 4.31 MM**

**GRADING RESULTS**

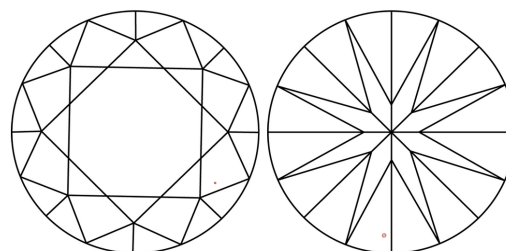
Carat Weight **1.22 CARAT**  
 Color Grade **D**  
 Clarity Grade **VS 1**  
 Cut Grade **EXCELLENT**

**ADDITIONAL GRADING INFORMATION**

Polish **EXCELLENT**  
 Symmetry **EXCELLENT**  
 Fluorescence **NONE**  
 Inscription(s) **LABGROWN IGI LG529259183**

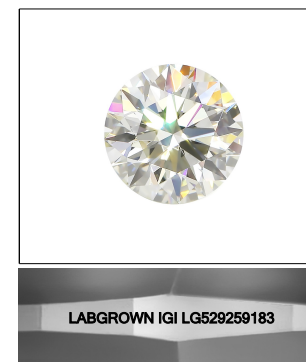
Comments: As Grown - No indication of post-growth treatment. This Laboratory Grown Diamond was created by High Pressure High Temperature (HPHT) growth process. Type II

**CLARITY CHARACTERISTICS**



**KEY TO SYMBOLS**

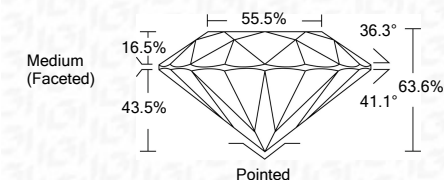
Red symbols indicate internal characteristics.  
 Green symbols indicate external characteristics.



**LASERSCRIBE<sup>SM</sup>**

Sample Image Used

May 18, 2022  
 IGI Report Number **LG529259183**  
 Description **LABORATORY GROWN DIAMOND**  
 Shape and Cutting Style **ROUND BRILLIANT**  
 Measurements **6.74 - 6.80 X 4.31 MM**  
**GRADING RESULTS**  
 Carat Weight **1.22 CARAT**  
 Color Grade **D**  
 Clarity Grade **VS 1**  
 Cut Grade **EXCELLENT**



**ADDITIONAL GRADING INFORMATION**

Polish **EXCELLENT**  
 Symmetry **EXCELLENT**  
 Fluorescence **NONE**  
 Inscription(s) **LABGROWN IGI LG529259183**  
 Comments: As Grown - No indication of post-growth treatment. This Laboratory Grown Diamond was created by High Pressure High Temperature (HPHT) growth process. Type II



**IGI**



|                 |                            |            |       |                  |           |           |                          |   |
|-----------------|----------------------------|------------|-------|------------------|-----------|-----------|--------------------------|---|
| May 18, 2022    | IGI Report No. LG529259183 | 1.22 CARAT | D     | Pointed          | EXCELLENT | EXCELLENT | LABGROWN IGI LG529259183 | As Grown - No indication of post-growth treatment. This Laboratory Grown Diamond was created by High Pressure High Temperature (HPHT) growth process. Type II |
| ROUND BRILLIANT | 6.74 - 6.80 X 4.31 MM      | EXCELLENT  | VS 1  | EXCELLENT        | EXCELLENT | NONE      | LABGROWN IGI LG529259183 |   |
| Carat Weight    |                            | 63.6%      | 55.5% | Medium (Faceted) |           |           |                          |   |
| Color Grade     |                            |            |       |                  |           |           |                          |   |
| Clarity Grade   |                            |            |       |                  |           |           |                          |   |
| Cut Grade       |                            |            |       |                  |           |           |                          |   |
| Depth           |                            |            |       |                  |           |           |                          |   |
| Table           |                            |            |       |                  |           |           |                          |   |
| Girdle          |                            |            |       |                  |           |           |                          |   |
| Culet           |                            |            |       |                  |           |           |                          |   |
| Polish          |                            |            |       |                  |           |           |                          |   |
| Symmetry        |                            |            |       |                  |           |           |                          |   |
| Fluorescence    |                            |            |       |                  |           |           |                          |   |
| Inscription(s)  |                            |            |       |                  |           |           |                          |   |