

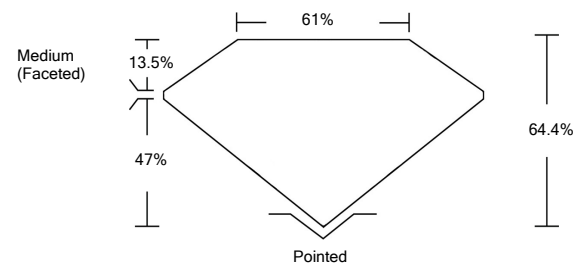


ELECTRONIC COPY

LABORATORY GROWN DIAMOND REPORT

LG529259244

PROPORTIONS



GRADING SCALES

| | | | | | | |
|-----------------------------|------------------------------|-----------------------------|------------------------|-------------------|-----------|---|
| COLOR GRADING SCALE | CL | NC | FT | VLT | LT | |
| | COLORLESS D-F | NEAR COLORLESS G-J | FAINT K-M | VERY LIGHT N-R | LIGHT S-Z | |
| CLARITY (10x) GRADING SCALE | FL | IF | VVS | VS | SI | I |
| | FLAWLESS INTERNALLY FLAWLESS | VERY VERY SLIGHTLY INCLUDED | VERY SLIGHTLY INCLUDED | SLIGHTLY INCLUDED | INCLUDED | |

May 19, 2022

IGI Report Number

LG529259244

Description

**LABORATORY GROWN
DIAMOND**

Shape and Cutting Style

OVAL BRILLIANT

Measurements

8.88 X 6.52 X 4.20 MM

GRADING RESULTS

Carat Weight

1.51 CARAT

Color Grade

D

Clarity Grade

VS 2

May 19, 2022

IGI Report Number

LG529259244

Description

**LABORATORY GROWN
DIAMOND**

Shape and Cutting Style

OVAL BRILLIANT

Measurements

8.88 X 6.52 X 4.20 MM

GRADING RESULTS

Carat Weight

1.51 CARAT

Color Grade

D

Clarity Grade

VS 2

ADDITIONAL GRADING INFORMATION

Polish

EXCELLENT

Symmetry

EXCELLENT

Fluorescence

NONE

Inscription(s)

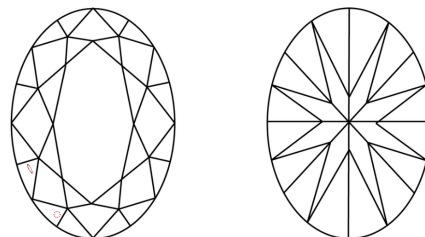
LABGROWN IGI LG529259244

Comments: As Grown - No indication of post-growth treatment.

This Laboratory Grown Diamond was created by High Pressure High Temperature (HPHT) growth process.

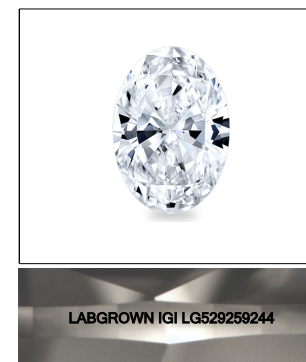
Type II

CLARITY CHARACTERISTICS



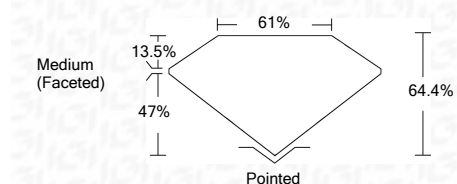
KEY TO SYMBOLS

Red symbols indicate internal characteristics.
Green symbols indicate external characteristics.



LASERSCRIBESM

Sample Image Used



ADDITIONAL GRADING INFORMATION

Polish

EXCELLENT

Symmetry

EXCELLENT

Fluorescence

NONE

Inscription(s)

LABGROWN IGI LG529259244

Comments: As Grown - No indication of post-growth treatment.

This Laboratory Grown Diamond was created by High Pressure High Temperature (HPHT) growth process.

Type II



| | | | |
|----------------------------|------------------|--------------|--------------|
| IGI Report No. LG529259244 | 1.51 CARAT | D | Pointed |
| OVAL BRILLIANT | VS 2 | EXCELLENT | EXCELLENT |
| 8.88 X 6.52 X 4.20 MM | 64.4% | EXCELLENT | EXCELLENT |
| Carat Weight | 61% | NONE | NONE |
| Color Grade | Medium (Faceted) | LABGROWN IGI | LABGROWN IGI |
| Clarity Grade | | LG529259244 | LG529259244 |
| Depth | | | |
| Table | | | |
| Girdle | | | |
| Culet | | | |
| Polish | | | |
| Symmetry | | | |
| Fluorescence | | | |
| Inscription(s) | | | |
| Comments: | | | |

As Grown - No indication of post-growth treatment.
This Laboratory Grown Diamond was created by High Pressure High Temperature (HPHT) growth process.
Type II