



LABORATORY GROWN DIAMOND REPORT

May 19, 2022

IGI Report Number **LG529262735**

Description	LABORATORY GROWN DIAMOND
-------------	-----------------------------

Shape and Cutting Style **SQUARE CUSHION BRILLIANT**

Measurements **6.47 X 6.32 X 4.23 MM**

GRADING RESULTS

Carat Weight **1.51 CARAT**

Color Grade **D**

Clarity Grade	SI 1
---------------	------

ADDITIONAL GRADING INFORMATION

Polish **EXCELLENT**

Symmetry **EXCELLENT**

Fluorescence **NONE**

Inscription(s) **LABGROWN IGI LG529262735**

Comments: As Grown - No indication of post-growth treatment.
This Laboratory Grown Diamond was created by High
Pressure High Temperature (HPHT) growth process.
Type II

PROPORTIONS

Thick To Very Thick (Faceted)

65.5%

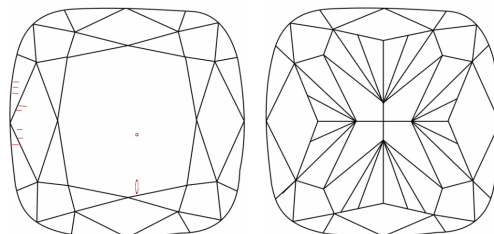
13%

48.5%

66.9%

Pointed

CLARITY CHARACTERISTICS

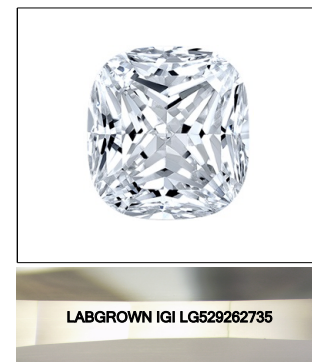


KEY TO SYMBOLS

Red symbols indicate internal characteristics.
Green symbols indicate external characteristics.

GRADING SCALES

COLOR GRADING SCALE	CL		NC		FT		VLT		LT	
	COLORLESS D-F		NEAR COLORLESS G-J		FAINT K-M		VERY LIGHT N-R		LIGHT S-Z	
CLARITY (10x) GRADING SCALE	FL	IF	VVS		VS		SI		I	
	FLAWLESS		VERY VERY SLIGHTLY INCLUDED		VERY SLIGHTLY INCLUDED		SLIGHTLY INCLUDED		INCLUDED	

LASERSCRIBESM

Sample Image Used



© IGI 2020, International Gemological Institute

FD - 10 20

LABORATORY GROWN DIAMOND REPORT

May 19, 2022

IGI Report Number **LG529262735**

Description	LABORATORY GROWN DIAMOND
-------------	-----------------------------

Shape and Cutting Style **SQUARE CUSHION**
BRILLIANT

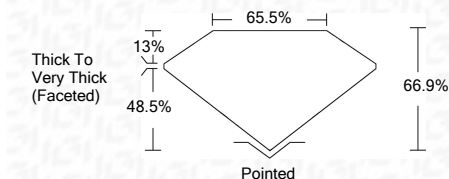
Measurements **6.47 X 6.32 X 4.23 MM**

GRADING RESULTS

Carat Weight **1.51 CARAT**

Color Grade D

Clarity Grade	SI 1
---------------	------



ADDITIONAL GRADING INFORMATION

Polish **EXCELLENT**

Symmetry **EXCELLENT**

Fluorescence **NONE**Inscription(s) **LABGROWN IGI LG529262735**

Comments: As Grown - No indication of post-growth treatment.
This Laboratory Grown Diamond was created by High Pressure High Temperature (HPHT) growth process.
Type II



May 19, 2022	IGI Report No. LG5262735	SQUARE CUSHION BRILLIANT	1.51 CARAT
		4.7 X 5.32 X 4.23 MM	
		Carat Weight	
		Color Grade	D
		Clarity Grade	SI 1
		Depth	66.9%
		Table	65.5%
		Girdle	Thick to Very Thick (Faced)
		Culet	Pointed
		Polish	EXCELLENT
		Symmetry	EXCELLENT
		Fluorescence	NONE
		Inscriptions	LABGROWN IGI LG5262735
		Comments:	
		<p>As Grown - No indication of post-growth treatment.</p> <p>This Laboratory Grown Diamond was created by High Pressure High Temperature (HPHT) growth process.</p>	

www.igi.org