



ELECTRONIC COPY

LG529263423

LABORATORY GROWN DIAMOND REPORT

May 17, 2022
IGI Report Number **LG529263423**
Description **LABORATORY GROWN
DIAMOND**
Shape and Cutting Style **ROUND BRILLIANT**
Measurements **7.80 - 7.83 X 4.81 MM**

GRADING RESULTS

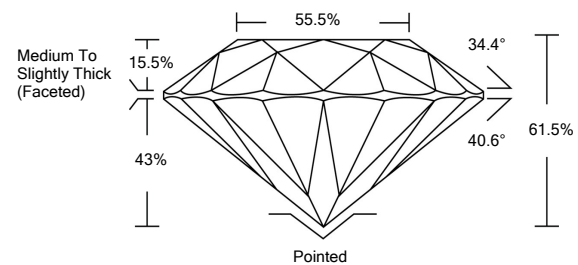
Carat Weight **1.80 CARAT**
Color Grade **D**
Clarity Grade **VS 1**
Cut Grade **IDEAL**

ADDITIONAL GRADING INFORMATION

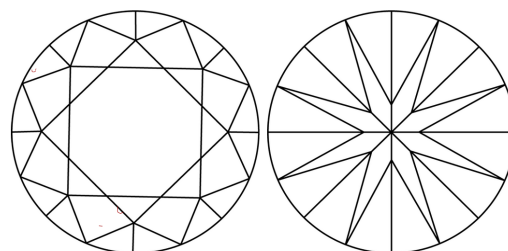
Polish **EXCELLENT**
Symmetry **EXCELLENT**
Fluorescence **NONE**
Inscription(s) **LABGROWN IGI LG529263423**

Comments: As Grown - No indication of post-growth treatment. This Laboratory Grown Diamond was created by High Pressure High Temperature (HPHT) growth process. Type II

PROPORTIONS



CLARITY CHARACTERISTICS

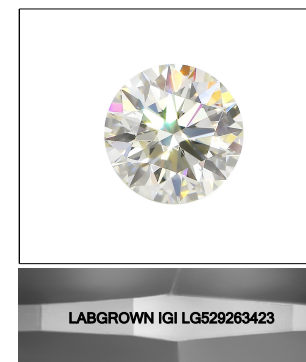


KEY TO SYMBOLS

Red symbols indicate internal characteristics.
Green symbols indicate external characteristics.

GRADING SCALES

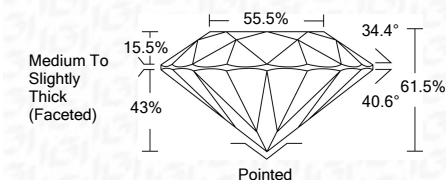
COLOR GRADING SCALE	CL	NC	FT	VL	LT	
	COLORLESS D-F	NEAR COLORLESS G-J	FAINT K-M	VERY LIGHT N-R	LIGHT S-Z	
CLARITY (10x) GRADING SCALE	FL	IF	VVS	VS	SI	I
	FLAWLESS INTERNALLY FLAWLESS	VERY VERY SLIGHTLY INCLUDED	VERY SLIGHTLY INCLUDED	SLIGHTLY INCLUDED	INCLUDED	



LASERSCRIBESM

Sample Image Used

May 17, 2022
IGI Report Number **LG529263423**
Description **LABORATORY GROWN
DIAMOND**
Shape and Cutting Style **ROUND BRILLIANT**
Measurements **7.80 - 7.83 X 4.81 MM**
GRADING RESULTS
Carat Weight **1.80 CARAT**
Color Grade **D**
Clarity Grade **VS 1**
Cut Grade **IDEAL**



ADDITIONAL GRADING INFORMATION

Polish **EXCELLENT**
Symmetry **EXCELLENT**
Fluorescence **NONE**
Inscription(s) **LABGROWN IGI LG529263423**
Comments: As Grown - No indication of post-growth treatment. This Laboratory Grown Diamond was created by High Pressure High Temperature (HPHT) growth process. Type II



IGI

May 17, 2022	IGI Report No. LG529263423	1.80 CARAT	D	Pointed	EXCELLENT	EXCELLENT	NONE	LABGROWN IGI LG529263423	As Grown - No indication of post-growth treatment. This Laboratory Grown Diamond was created by High Pressure High Temperature (HPHT) growth process. Type II
ROUND BRILLIANT	7.80 - 7.83 X 4.81 MM	Color Grade	VS 1	Cut	EXCELLENT	EXCELLENT	NONE	LABGROWN IGI LG529263423	
Carat Weight		Clarity Grade	IDEAL	Polish	EXCELLENT	EXCELLENT	NONE	LABGROWN IGI LG529263423	
Color Grade		Cut Grade	55.5%	Symmetry	EXCELLENT	EXCELLENT	NONE	LABGROWN IGI LG529263423	
Clarity Grade		Depth	Medium To Slightly Thick (Faceted)	Fluorescence	EXCELLENT	EXCELLENT	NONE	LABGROWN IGI LG529263423	
Depth		Table		Inscription(s)	EXCELLENT	EXCELLENT	NONE	LABGROWN IGI LG529263423	
Table		Girdle		Comments:	EXCELLENT	EXCELLENT	NONE	LABGROWN IGI LG529263423	
Girdle		Culet			EXCELLENT	EXCELLENT	NONE	LABGROWN IGI LG529263423	
Culet		Polish			EXCELLENT	EXCELLENT	NONE	LABGROWN IGI LG529263423	
Polish		Symmetry			EXCELLENT	EXCELLENT	NONE	LABGROWN IGI LG529263423	
Symmetry		Fluorescence			EXCELLENT	EXCELLENT	NONE	LABGROWN IGI LG529263423	
Fluorescence		Inscription(s)			EXCELLENT	EXCELLENT	NONE	LABGROWN IGI LG529263423	
Inscription(s)		Comments:			EXCELLENT	EXCELLENT	NONE	LABGROWN IGI LG529263423	
Comments:					EXCELLENT	EXCELLENT	NONE	LABGROWN IGI LG529263423	