



**ELECTRONIC COPY**

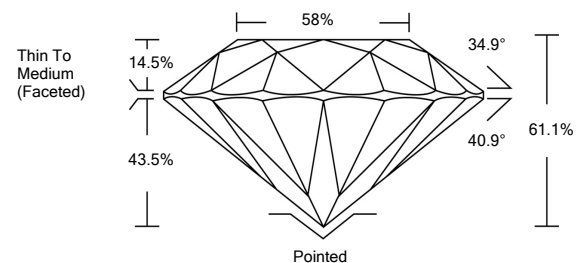
LG529263439

**LABORATORY GROWN DIAMOND REPORT**

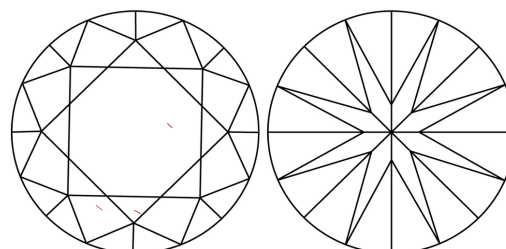
**GRADING SCALES**

COLOR GRADING SCALE	CL	NC	FT	VL	LT	
	COLORLESS D-F	NEAR COLORLESS G-J	FAINT K-M	VERY LIGHT N-R	LIGHT S-Z	
CLARITY (10x) GRADING SCALE	FL	IF	VVS	VS	SI	I
	FLAWLESS INTERNALLY FLAWLESS	VERY VERY SLIGHTLY INCLUDED	VERY SLIGHTLY INCLUDED	SLIGHTLY INCLUDED	INCLUDED	

**PROPORTIONS**

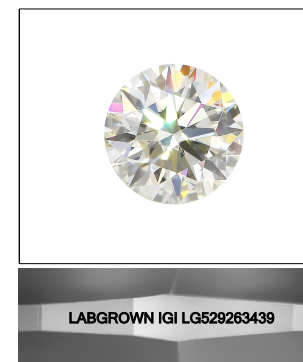


**CLARITY CHARACTERISTICS**



**KEY TO SYMBOLS**

Red symbols indicate internal characteristics.  
Green symbols indicate external characteristics.



**LASERSCRIBE<sup>SM</sup>**  
Sample Image Used

May 19, 2022

IGI Report Number **LG529263439**

Description **LABORATORY GROWN DIAMOND**

Shape and Cutting Style **ROUND BRILLIANT**

Measurements **6.77 - 6.81 X 4.15 MM**

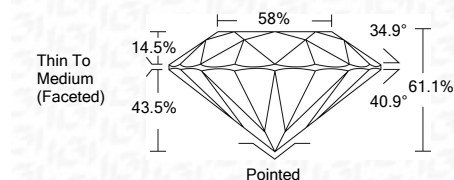
**GRADING RESULTS**

Carat Weight **1.17 CARAT**

Color Grade **D**

Clarity Grade **VS 2**

Cut Grade **IDEAL**



**ADDITIONAL GRADING INFORMATION**

Polish **EXCELLENT**

Symmetry **EXCELLENT**

Fluorescence **NONE**

Inscription(s) **LABGROWN IGI LG529263439**

Comments: As Grown - No indication of post-growth treatment.  
This Laboratory Grown Diamond was created by High Pressure High Temperature (HPHT) growth process.  
Type II

May 19, 2022

IGI Report Number **LG529263439**

Description **LABORATORY GROWN DIAMOND**

Shape and Cutting Style **ROUND BRILLIANT**

Measurements **6.77 - 6.81 X 4.15 MM**

**GRADING RESULTS**

Carat Weight **1.17 CARAT**

Color Grade **D**

Clarity Grade **VS 2**

Cut Grade **IDEAL**

**ADDITIONAL GRADING INFORMATION**

Polish **EXCELLENT**

Symmetry **EXCELLENT**

Fluorescence **NONE**

Inscription(s) **LABGROWN IGI LG529263439**

Comments: As Grown - No indication of post-growth treatment.  
This Laboratory Grown Diamond was created by High Pressure High Temperature (HPHT) growth process.  
Type II



**IGI**



May 19, 2022	IGI Report No. LG529263439	1.17 CARAT	D	Pointed	EXCELLENT	EXCELLENT	NONE	LABGROWN IGI LG529263439	As Grown - No indication of post-growth treatment. This Laboratory Grown Diamond was created by High Pressure High Temperature (HPHT) growth process. Type II
ROUND BRILLIANT	6.77 - 6.81 X 4.15 MM	Color Grade	VS 2	IDEAL	61.1%	58%	Thin To Medium (Faceted)	Polish	EXCELLENT
Carat Weight	Color Grade	Clarity Grade	Cut Grade	Depth	Table	Girdle	Culet	Polish	EXCELLENT
	Color Grade	Clarity Grade	Cut Grade	Depth	Table	Girdle	Culet	Symmetry	EXCELLENT
	Color Grade	Clarity Grade	Cut Grade	Depth	Table	Girdle	Culet	Fluorescence	NONE
	Color Grade	Clarity Grade	Cut Grade	Depth	Table	Girdle	Culet	Inscription(s)	LABGROWN IGI LG529263439