



**ELECTRONIC COPY**

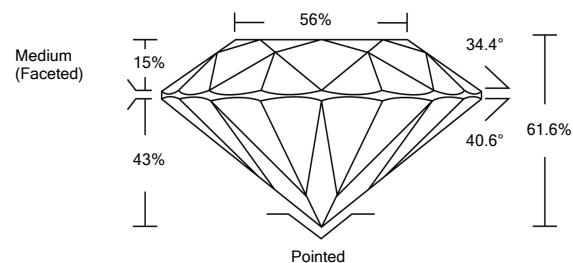
LG529265815

**LABORATORY GROWN DIAMOND REPORT**

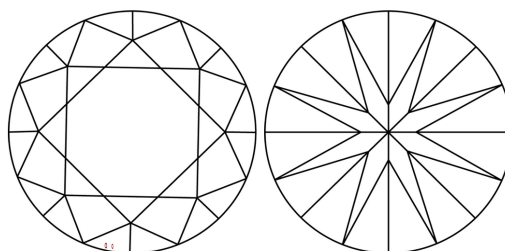
**GRADING SCALES**

COLOR GRADING SCALE	CL	NC	FT	VLT	LT	
	COLORLESS D-F	NEAR COLORLESS G-J	FAINT K-M	VERY LIGHT N-R	LIGHT S-Z	
CLARITY (10x) GRADING SCALE	FL	IF	VVS	VS	SI	I
	FLAWLESS INTERNALLY FLAWLESS	VERY VERY SLIGHTLY INCLUDED	VERY SLIGHTLY INCLUDED	SLIGHTLY INCLUDED	INCLUDED	

**PROPORTIONS**

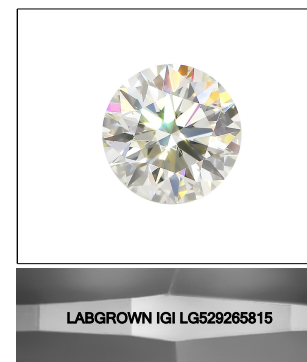


**CLARITY CHARACTERISTICS**



**KEY TO SYMBOLS**

Red symbols indicate internal characteristics.  
Green symbols indicate external characteristics.



**LASERSCRIBE<sup>SM</sup>**  
Sample Image Used

May 22, 2022

IGI Report Number **LG529265815**

Description **LABORATORY GROWN DIAMOND**

Shape and Cutting Style **ROUND BRILLIANT**

Measurements **8.33 - 8.39 X 5.15 MM**

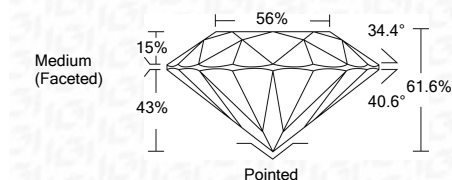
**GRADING RESULTS**

Carat Weight **2.21 CARATS**

Color Grade **E**

Clarity Grade **VS 1**

Cut Grade **IDEAL**



**ADDITIONAL GRADING INFORMATION**

Polish **EXCELLENT**

Symmetry **EXCELLENT**

Fluorescence **NONE**

Inscription(s) **LABGROWN IGI LG529265815**

Comments: As Grown - No indication of post-growth treatment.  
This Laboratory Grown Diamond was created by High Pressure High Temperature (HPHT) growth process. Type II

May 22, 2022

IGI Report Number **LG529265815**

Description **LABORATORY GROWN DIAMOND**

Shape and Cutting Style **ROUND BRILLIANT**

Measurements **8.33 - 8.39 X 5.15 MM**

**GRADING RESULTS**

Carat Weight **2.21 CARATS**

Color Grade **E**

Clarity Grade **VS 1**

Cut Grade **IDEAL**

**ADDITIONAL GRADING INFORMATION**

Polish **EXCELLENT**

Symmetry **EXCELLENT**

Fluorescence **NONE**

Inscription(s) **LABGROWN IGI LG529265815**

Comments: As Grown - No indication of post-growth treatment.  
This Laboratory Grown Diamond was created by High Pressure High Temperature (HPHT) growth process. Type II



**IGI**



May 22, 2022	IGI Report No. LG529265815	2.21 CARATS	E	VS 1	IDEAL	61.6%	56%	Medium (Faceted)	Pointed	EXCELLENT	EXCELLENT	NONE	LABGROWN IGI LG529265815
IGI Report No. LG529265815	ROUND BRILLIANT	8.33 - 8.39 X 5.15 MM	2.21 CARATS	VS 1	IDEAL	61.6%	56%	Medium (Faceted)	Pointed	EXCELLENT	EXCELLENT	NONE	LABGROWN IGI LG529265815
Color Grade	Clarity Grade	Cut Grade	Depth	Table	Girdle	Culet	Polish	Symmetry	Fluorescence	Inscription(s)	Comments:	As Grown - No indication of post-growth treatment. This Laboratory Grown Diamond was created by High Pressure High Temperature (HPHT) growth process. Type II	