

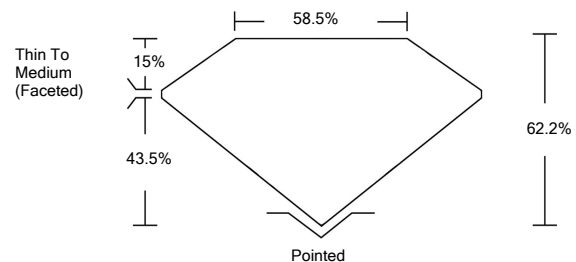


ELECTRONIC COPY

LABORATORY GROWN DIAMOND REPORT

LG529266225

PROPORTIONS



GRADING SCALES

| | | | | | | |
|-----------------------------|------------------------------|-----------------------------|------------------------|-------------------|-----------|----------|
| COLOR GRADING SCALE | CL | NC | FT | VL | LT | |
| | COLORLESS D-F | NEAR COLORLESS G-J | FAINT K-M | VERY LIGHT N-R | LIGHT S-Z | |
| CLARITY (10x) GRADING SCALE | FL | IF | VVS | VS | SI | I |
| | FLAWLESS INTERNALLY FLAWLESS | VERY VERY SLIGHTLY INCLUDED | VERY SLIGHTLY INCLUDED | SLIGHTLY INCLUDED | INCLUDED | INCLUDED |

May 21, 2022

IGI Report Number

LG529266225

Description

**LABORATORY GROWN
DIAMOND**

Shape and Cutting Style

OVAL BRILLIANT

Measurements

12.54 X 8.71 X 5.42 MM

GRADING RESULTS

Carat Weight

3.62 CARATS

Color Grade

G

Clarity Grade

VS 2

May 21, 2022

IGI Report Number

LG529266225

Description

**LABORATORY GROWN
DIAMOND**

Shape and Cutting Style

OVAL BRILLIANT

Measurements

12.54 X 8.71 X 5.42 MM

GRADING RESULTS

Carat Weight

3.62 CARATS

Color Grade

G

Clarity Grade

VS 2

ADDITIONAL GRADING INFORMATION

Polish

EXCELLENT

Symmetry

EXCELLENT

Fluorescence

NONE

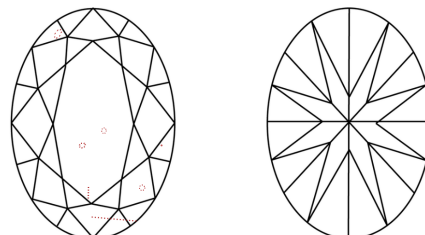
Inscription(s)

LABGROWN IGI LG529266225

Comments: This Laboratory Grown Diamond was created by Chemical Vapor Deposition (CVD) growth process and may include post-growth treatment.

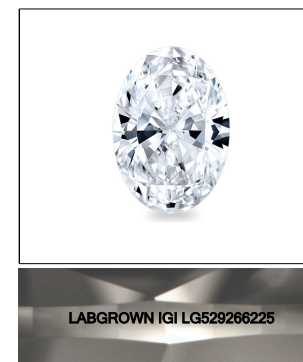
Type IIa

CLARITY CHARACTERISTICS



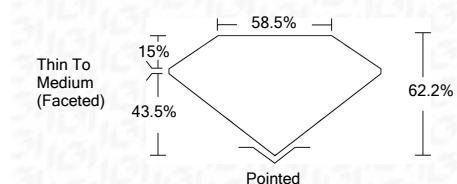
KEY TO SYMBOLS

Red symbols indicate internal characteristics.
Green symbols indicate external characteristics.



LASERSCRIBESM

Sample Image Used



ADDITIONAL GRADING INFORMATION

Polish

EXCELLENT

Symmetry

EXCELLENT

Fluorescence

NONE

Inscription(s)

LABGROWN IGI LG529266225

Comments: This Laboratory Grown Diamond was created by Chemical Vapor Deposition (CVD) growth process and may include post-growth treatment.

Type IIa



IGI

| | | |
|----------------------------|--------------------------|--------------|
| IGI Report No. LG529266225 | 3.62 CARATS | G |
| OVAL BRILLIANT | VS 2 | 62.2% |
| 12.54 X 8.71 X 5.42 MM | 43.5% | 58.5% |
| Carat Weight | Thin To Medium (Faceted) | Pointed |
| Color Grade | EXCELLENT | EXCELLENT |
| Clarity Grade | EXCELLENT | EXCELLENT |
| Depth | NONE | NONE |
| Table | LABGROWN IGI | LABGROWN IGI |
| Grade | LG529266225 | LG529266225 |
| Culet | | |
| Polish | | |
| Symmetry | | |
| Fluorescence | | |
| Inscription(s) | | |
| Comments: | | |

This Laboratory Grown Diamond was created by Chemical Vapor Deposition (CVD) growth process and may include post-growth treatment.
Type IIa