



ELECTRONIC COPY

LG529267124

LABORATORY GROWN DIAMOND REPORT

May 20, 2022
 IGI Report Number **LG529267124**
 Description **LABORATORY GROWN
DIAMOND**
 Shape and Cutting Style **ROUND BRILLIANT**
 Measurements **8.39 - 8.44 X 5.13 MM**

GRADING RESULTS

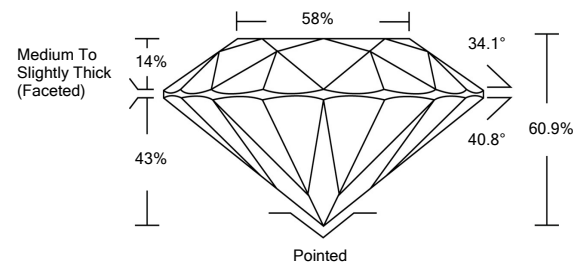
Carat Weight **2.25 CARATS**
 Color Grade **F**
 Clarity Grade **VS 2**
 Cut Grade **IDEAL**

ADDITIONAL GRADING INFORMATION

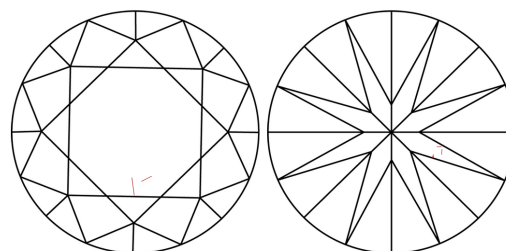
Polish **EXCELLENT**
 Symmetry **EXCELLENT**
 Fluorescence **NONE**
 Inscription(s) **LABGROWN IGI LG529267124**

Comments: As Grown - No indication of post-growth treatment. This Laboratory Grown Diamond was created by High Pressure High Temperature (HPHT) growth process. Type II

PROPORTIONS



CLARITY CHARACTERISTICS

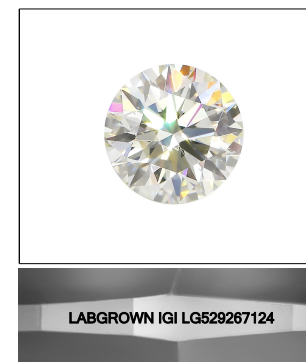


KEY TO SYMBOLS

Red symbols indicate internal characteristics.
 Green symbols indicate external characteristics.

GRADING SCALES

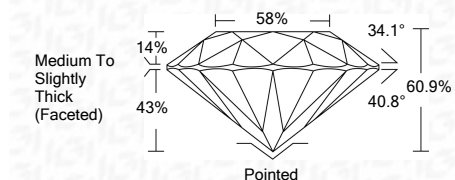
COLOR GRADING SCALE	CL	NC	FT	VL	LT	
	COLORLESS D-F	NEAR COLORLESS G-J	FAINT K-M	VERY LIGHT N-R	LIGHT S-Z	
CLARITY (10x) GRADING SCALE	FL	IF	VVS	VS	SI	I
	FLAWLESS INTERNALLY FLAWLESS	VERY VERY SLIGHTLY INCLUDED	VERY SLIGHTLY INCLUDED	SLIGHTLY INCLUDED	INCLUDED	



LASERSCRIBE™

Sample Image Used

May 20, 2022
 IGI Report Number **LG529267124**
 Description **LABORATORY GROWN
DIAMOND**
 Shape and Cutting Style **ROUND BRILLIANT**
 Measurements **8.39 - 8.44 X 5.13 MM**
GRADING RESULTS
 Carat Weight **2.25 CARATS**
 Color Grade **F**
 Clarity Grade **VS 2**
 Cut Grade **IDEAL**



ADDITIONAL GRADING INFORMATION

Polish **EXCELLENT**
 Symmetry **EXCELLENT**
 Fluorescence **NONE**
 Inscription(s) **LABGROWN IGI LG529267124**
 Comments: As Grown - No indication of post-growth treatment. This Laboratory Grown Diamond was created by High Pressure High Temperature (HPHT) growth process. Type II



IGI



May 20, 2022	IGI Report No. LG529267124	2.25 CARATS	F	Pointed	EXCELLENT	EXCELLENT	LABGROWN IGI LG529267124	Comments: As Grown - No indication of post-growth treatment. This Laboratory Grown Diamond was created by High Pressure High Temperature (HPHT) growth process. Type II
ROUND BRILLIANT	8.39 - 8.44 X 5.13 MM	VS 2	IDEAL	60.9%	58%	Medium To Slightly Thick (Faceted)	Polish	
Color Grade	2.25 CARATS	VS 2	IDEAL	60.9%	58%	Medium To Slightly Thick (Faceted)	Symmetry	
Clarity Grade	2.25 CARATS	VS 2	IDEAL	60.9%	58%	Medium To Slightly Thick (Faceted)	Fluorescence	
Cut Grade	2.25 CARATS	VS 2	IDEAL	60.9%	58%	Medium To Slightly Thick (Faceted)	Inscription(s)	
Depth	2.25 CARATS	VS 2	IDEAL	60.9%	58%	Medium To Slightly Thick (Faceted)	Culet	
Table	2.25 CARATS	VS 2	IDEAL	60.9%	58%	Medium To Slightly Thick (Faceted)	Symmetry	
Girdle	2.25 CARATS	VS 2	IDEAL	60.9%	58%	Medium To Slightly Thick (Faceted)	Fluorescence	
Culet	2.25 CARATS	VS 2	IDEAL	60.9%	58%	Medium To Slightly Thick (Faceted)	Inscription(s)	
Symmetry	2.25 CARATS	VS 2	IDEAL	60.9%	58%	Medium To Slightly Thick (Faceted)	Inscription(s)	