



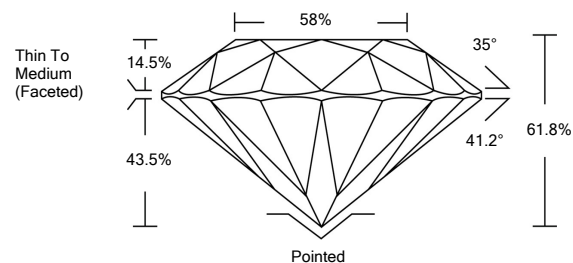
ELECTRONIC COPY

LG529267143

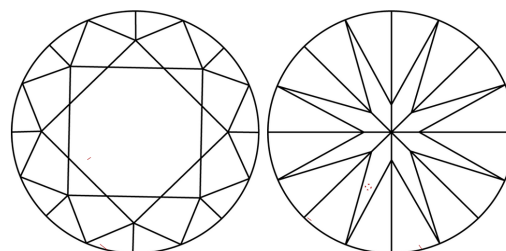
GRADING SCALES

| | | | | | | |
|-----------------------------|------------------------------|-----------------------------|------------------------|-------------------|-----------|---|
| COLOR GRADING SCALE | CL | NC | FT | VLT | LT | |
| | COLORLESS D-F | NEAR COLORLESS G-J | FAINT K-M | VERY LIGHT N-R | LIGHT S-Z | |
| CLARITY (10x) GRADING SCALE | FL | IF | VVS | VS | SI | I |
| | FLAWLESS INTERNALLY FLAWLESS | VERY VERY SLIGHTLY INCLUDED | VERY SLIGHTLY INCLUDED | SLIGHTLY INCLUDED | INCLUDED | |

PROPORTIONS

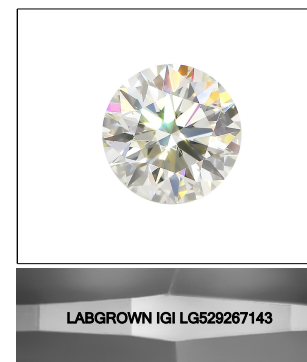


CLARITY CHARACTERISTICS



KEY TO SYMBOLS

Red symbols indicate internal characteristics. Green symbols indicate external characteristics.



LASERSCRIBESM

Sample Image Used

May 20, 2022

IGI Report Number

LG529267143

Description

LABORATORY GROWN DIAMOND

Shape and Cutting Style

ROUND BRILLIANT

Measurements

9.33 - 9.38 X 5.79 MM

GRADING RESULTS

Carat Weight

3.11 CARATS

Color Grade

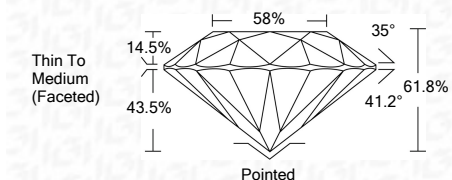
E

Clarity Grade

VS 1

Cut Grade

IDEAL



ADDITIONAL GRADING INFORMATION

Polish

EXCELLENT

Symmetry

EXCELLENT

Fluorescence

NONE

Inscription(s)

LABGROWN IGI LG529267143

Comments: As Grown - No indication of post-growth treatment. This Laboratory Grown Diamond was created by High Pressure High Temperature (HPHT) growth process. Type II



IGI



| | | | | | | | | | |
|-----------------|----------------------------|---------------|--------------------------|--------------|-----------|----------------|--------------------------|--------------------------|---|
| May 20, 2022 | IGI Report No. LG529267143 | 3.11 CARATS | E | Pointed | EXCELLENT | EXCELLENT | NONE | LABGROWN IGI LG529267143 | As Grown - No indication of post-growth treatment. This Laboratory Grown Diamond was created by High Pressure High Temperature (HPHT) growth process. Type II |
| ROUND BRILLIANT | 9.33 - 9.38 X 5.79 MM | Color Grade | VS 1 | Cut Grade | IDEAL | Polish | EXCELLENT | Symmetry | EXCELLENT |
| Carat Weight | 3.11 CARATS | Clarity Grade | VS 1 | Fluorescence | NONE | Inscription(s) | LABGROWN IGI LG529267143 | Comments: | As Grown - No indication of post-growth treatment. This Laboratory Grown Diamond was created by High Pressure High Temperature (HPHT) growth process. Type II |
| Color Grade | E | Depth | 61.8% | Culet | None | Fluorescence | NONE | | |
| Clarity Grade | VS 1 | Table | 58% | Symmetry | EXCELLENT | Inscription(s) | LABGROWN IGI LG529267143 | | |
| Cut Grade | IDEAL | Girdle | Thin To Medium (Faceted) | Fluorescence | NONE | | | | |