



**ELECTRONIC COPY**

LG529267641

**LABORATORY GROWN DIAMOND REPORT**

May 18, 2022  
 IGI Report Number **LG529267641**  
 Description **LABORATORY GROWN  
DIAMOND**  
 Shape and Cutting Style **ROUND BRILLIANT**  
 Measurements **7.73 - 7.75 X 4.67 MM**

**GRADING RESULTS**

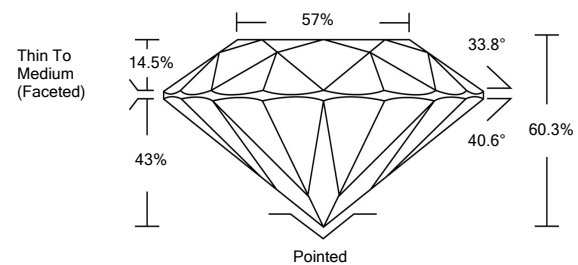
Carat Weight **1.70 CARAT**  
 Color Grade **D**  
 Clarity Grade **VVS 2**  
 Cut Grade **IDEAL**

**ADDITIONAL GRADING INFORMATION**

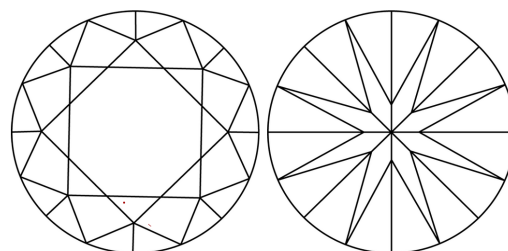
Polish **EXCELLENT**  
 Symmetry **EXCELLENT**  
 Fluorescence **NONE**  
 Inscription(s) **LABGROWN IGI LG529267641**

Comments: As Grown - No indication of post-growth treatment. This Laboratory Grown Diamond was created by High Pressure High Temperature (HPHT) growth process. Type II

**PROPORTIONS**



**CLARITY CHARACTERISTICS**

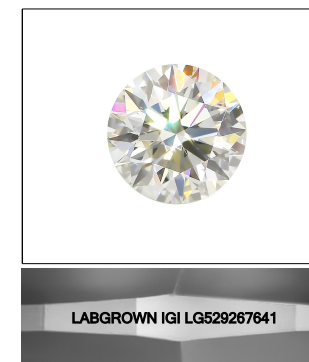


**KEY TO SYMBOLS**

Red symbols indicate internal characteristics.  
 Green symbols indicate external characteristics.

**GRADING SCALES**

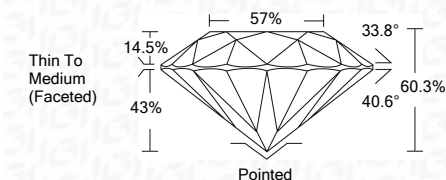
COLOR GRADING SCALE	CL	NC	FT	VL	LT	
	COLORLESS D-F	NEAR COLORLESS G-J	FAINT K-M	VERY LIGHT N-R	LIGHT S-Z	
CLARITY (10x) GRADING SCALE	FL	IF	VVS	VS	SI	I
	FLAWLESS INTERNALLY FLAWLESS	VERY VERY SLIGHTLY INCLUDED	VERY SLIGHTLY INCLUDED	SLIGHTLY INCLUDED	INCLUDED	



LASERSCRIBE<sup>SM</sup>

Sample Image Used

May 18, 2022  
 IGI Report Number **LG529267641**  
 Description **LABORATORY GROWN  
DIAMOND**  
 Shape and Cutting Style **ROUND BRILLIANT**  
 Measurements **7.73 - 7.75 X 4.67 MM**  
**GRADING RESULTS**  
 Carat Weight **1.70 CARAT**  
 Color Grade **D**  
 Clarity Grade **VVS 2**  
 Cut Grade **IDEAL**



**ADDITIONAL GRADING INFORMATION**

Polish **EXCELLENT**  
 Symmetry **EXCELLENT**  
 Fluorescence **NONE**  
 Inscription(s) **LABGROWN IGI LG529267641**  
 Comments: As Grown - No indication of post-growth treatment. This Laboratory Grown Diamond was created by High Pressure High Temperature (HPHT) growth process. Type II



**IGI**

May 18, 2022	IGI Report No. LG529267641	1.70 CARAT	D	Pointed
ROUND BRILLIANT	7.73 - 7.75 X 4.67 MM	VVS 2	IDEAL	EXCELLENT
Carat Weight	7.73 - 7.75 X 4.67 MM	60.3%	57%	EXCELLENT
Color Grade	D	Thin To Medium (Faceted)		NONE
Clarity Grade	VVS 2	LABGROWN IGI LG529267641		LABGROWN IGI LG529267641
Cut Grade	IDEAL			
Depth	60.3%			
Table	57%			
Girdle	Thin To Medium (Faceted)			
Culet	Pointed			
Polish	EXCELLENT			
Symmetry	EXCELLENT			
Fluorescence	NONE			
Inscription(s)	LABGROWN IGI LG529267641			
Comments:	As Grown - No indication of post-growth treatment. This Laboratory Grown Diamond was created by High Pressure High Temperature (HPHT) growth process. Type II			

