



**ELECTRONIC COPY**

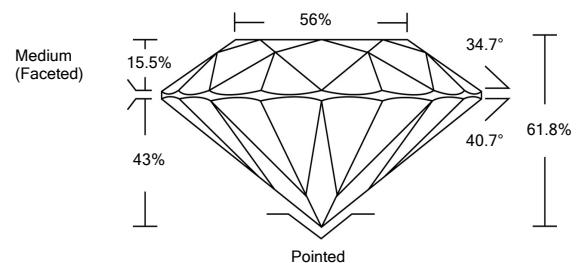
LG529268372

**LABORATORY GROWN DIAMOND REPORT**

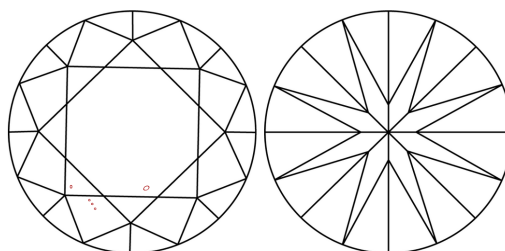
**GRADING SCALES**

| COLOR GRADING SCALE         | CL                           | NC                          | FT                     | VLT               | LT        |   |
|-----------------------------|------------------------------|-----------------------------|------------------------|-------------------|-----------|---|
|                             | COLORLESS D-F                | NEAR COLORLESS G-J          | FAINT K-M              | VERY LIGHT N-R    | LIGHT S-Z |   |
| CLARITY (10x) GRADING SCALE | FL                           | IF                          | VVS                    | VS                | SI        | I |
|                             | FLAWLESS INTERNALLY FLAWLESS | VERY VERY SLIGHTLY INCLUDED | VERY SLIGHTLY INCLUDED | SLIGHTLY INCLUDED | INCLUDED  |   |

**PROPORTIONS**

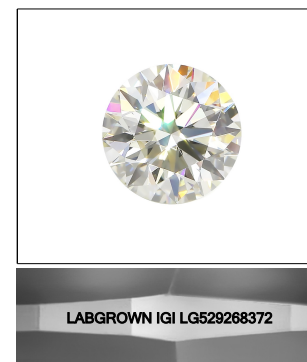


**CLARITY CHARACTERISTICS**



**KEY TO SYMBOLS**

Red symbols indicate internal characteristics.  
Green symbols indicate external characteristics.



LASERSCRIBE<sup>SM</sup>

Sample Image Used

May 22, 2022

IGI Report Number

**LG529268372**

Description

**LABORATORY GROWN  
DIAMOND**

Shape and Cutting Style

**ROUND BRILLIANT**

Measurements

**8.02 - 8.08 X 4.98 MM**

**GRADING RESULTS**

Carat Weight

**1.98 CARAT**

Color Grade

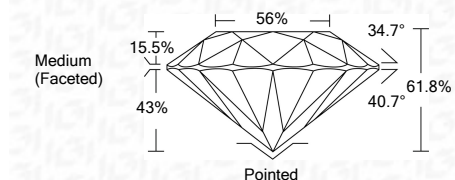
**E**

Clarity Grade

**VS 2**

Cut Grade

**IDEAL**



**ADDITIONAL GRADING INFORMATION**

Polish

**EXCELLENT**

Symmetry

**EXCELLENT**

Fluorescence

**NONE**

Inscription(s)

**LABGROWN IGI LG529268372**

Comments: As Grown - No indication of post-growth treatment.  
This Laboratory Grown Diamond was created by High Pressure High Temperature (HPHT) growth process. Type II

May 22, 2022

IGI Report Number

**LG529268372**

Description

**LABORATORY GROWN  
DIAMOND**

Shape and Cutting Style

**ROUND BRILLIANT**

Measurements

**8.02 - 8.08 X 4.98 MM**

**GRADING RESULTS**

Carat Weight

**1.98 CARAT**

Color Grade

**E**

Clarity Grade

**VS 2**

Cut Grade

**IDEAL**

**ADDITIONAL GRADING INFORMATION**

Polish

**EXCELLENT**

Symmetry

**EXCELLENT**

Fluorescence

**NONE**

Inscription(s)

**LABGROWN IGI LG529268372**

Comments: As Grown - No indication of post-growth treatment.  
This Laboratory Grown Diamond was created by High Pressure High Temperature (HPHT) growth process. Type II



**IGI**



|                            |                            |                       |            |             |               |       |       |                  |         |           |           |              |                          |  |
|----------------------------|----------------------------|-----------------------|------------|-------------|---------------|-------|-------|------------------|---------|-----------|-----------|--------------|--------------------------|--|
| May 22, 2022               | IGI Report No. LG529268372 | 1.98 CARAT            | E          | VS 2        | IDEAL         | 61.8% | 56%   | Medium (Faceted) | Pointed | EXCELLENT | EXCELLENT | NONE         | LABGROWN IGI LG529268372 | As Grown - No indication of post-growth treatment.<br>This Laboratory Grown Diamond was created by High Pressure High Temperature (HPHT) growth process. Type II |
| IGI Report No. LG529268372 | ROUND BRILLIANT            | 8.02 - 8.08 X 4.98 MM | 1.98 CARAT | Color Grade | Clarity Grade | Depth | Table | Girdle           | Culet   | Polish    | Symmetry  | Fluorescence | Inscription(s)           | Comments:  |