



ELECTRONIC COPY

LABORATORY GROWN DIAMOND REPORT

June 4, 2022
 IGI Report Number **LG529281536**
 Description **LABORATORY GROWN
DIAMOND**
 Shape and Cutting Style **ROUND ROSE CUT**
 Measurements **9.58 X 9.76 X 3.09 MM**

GRADING RESULTS

Carat Weight **2.30 CARATS**
 Color Grade **H**
 Clarity Grade **VS 1**

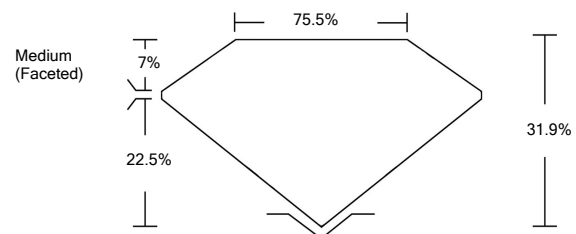
ADDITIONAL GRADING INFORMATION

Polish **EXCELLENT**
 Symmetry **VERY GOOD**
 Fluorescence **NONE**
 Inscription(s) **LABGROWN IGI LG529281536**

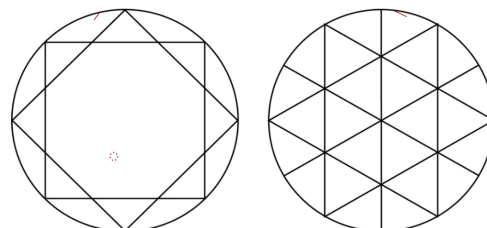
Comments: This Laboratory Grown Diamond was created by Chemical Vapor Deposition (CVD) growth process and may include post-growth treatment.
 Type IIa

LG529281536

PROPORTIONS



CLARITY CHARACTERISTICS

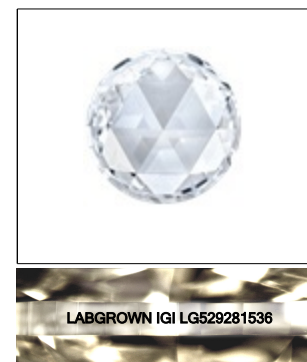


KEY TO SYMBOLS

Red symbols indicate internal characteristics.
 Green symbols indicate external characteristics.

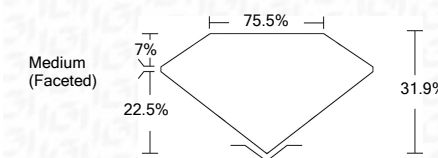
GRADING SCALES

COLOR GRADING SCALE	CL	NC	FT	VL	LT	
	COLORLESS D-F	NEAR COLORLESS G-J	FAINT K-M	VERY LIGHT N-R	LIGHT S-Z	
CLARITY (10x) GRADING SCALE	FL	IF	VVS	VS	SI	I
	FLAWLESS INTERNALLY FLAWLESS	VERY VERY SLIGHTLY INCLUDED	VERY SLIGHTLY INCLUDED	SLIGHTLY INCLUDED	INCLUDED	



LASERSCRIBESM
 Sample Image Used

June 4, 2022
 IGI Report Number **LG529281536**
 Description **LABORATORY GROWN
DIAMOND**
 Shape and Cutting Style **ROUND ROSE CUT**
 Measurements **9.58 X 9.76 X 3.09 MM**
GRADING RESULTS
 Carat Weight **2.30 CARATS**
 Color Grade **H**
 Clarity Grade **VS 1**



ADDITIONAL GRADING INFORMATION

Polish **EXCELLENT**
 Symmetry **VERY GOOD**
 Fluorescence **NONE**
 Inscription(s) **LABGROWN IGI LG529281536**
 Comments: This Laboratory Grown Diamond was created by Chemical Vapor Deposition (CVD) growth process and may include post-growth treatment.
 Type IIa



IGI Report No. LG529281536	2.30 CARATS	H	EXCELLENT
ROUND ROSE CUT	31.9%	VS 1	VERY GOOD
9.58 X 9.76 X 3.09 MM	75.5%		NONE
Carat Weight	Medium (Faceted)		LABGROWN IGI LG529281536
Color Grade			
Clarity Grade			
Depth			
Table			
Girdle			
Culet			
Polish			
Symmetry			
Fluorescence			
Inscription(s)			
Comments:			

This Laboratory Grown Diamond was created by Chemical Vapor Deposition (CVD) growth process and may include post-growth treatment.
 Type IIa

