



**INTERNATIONAL  
GEMOLOGICAL  
INSTITUTE**

**ELECTRONIC COPY**

**LABORATORY GROWN  
DIAMOND REPORT**

**IGI LABORATORY GROWN  
DIAMOND ID REPORT**

July 6, 2022  
IGI Report Number **LG530201095**  
**MARQUISE BRILLIANT**  
**7.46 X 3.73 X 2.22 MM**  
Carat Weight 0.36 CARAT  
Color Grade G  
Clarity Grade VVS 2  
Polish VERY GOOD  
Symmetry EXCELLENT  
Fluorescence NONE  
Inscription(s) LABGROWN IGI  
LG530201095

Comments: This Laboratory Grown Diamond was created by Chemical Vapor Deposition (CVD) growth process and may include post-growth treatment. Type IIa

**LABORATORY GROWN DIAMOND REPORT**

**IGI LABORATORY GROWN DIAMOND IDENTIFICATION REPORT**

July 6, 2022  
IGI Report Number LG530201095  
Description LABORATORY GROWN DIAMOND  
Shape and Cutting Style MARQUISE BRILLIANT  
Measurements 7.46 X 3.73 X 2.22 MM

**GRADING RESULTS**

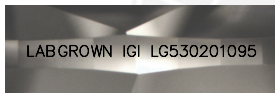
Carat Weight 0.36 CARAT  
Color Grade G  
Clarity Grade VVS 2

**ADDITIONAL GRADING INFORMATION**

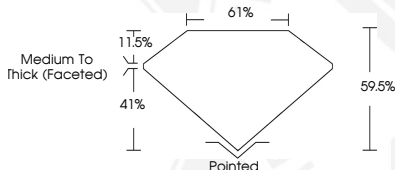
Polish VERY GOOD  
Symmetry EXCELLENT  
Fluorescence NONE  
Inscription(s) LABGROWN IGI LG530201095

Comments: This Laboratory Grown Diamond was created by Chemical Vapor Deposition (CVD) growth process and may include post-growth treatment. Type IIa

**LG530201095**



**LASERSCRIBE<sup>SM</sup>**  
Sample Images Used



THIS DOCUMENT WAS PRODUCED WITH THE FOLLOWING SECURITY MEASURES: SPECIAL DOCUMENT PAPER, INK SCREENS, WATERMARK, BACKGROUND DESIGN, HOLOGRAM AND OTHER SECURITY FEATURES NOT LISTED AND DO EXCEED DOCUMENT SECURITY INDUSTRY GUIDELINES.

For terms & conditions and to verify this report, please visit [www.igi.org](http://www.igi.org)

**IGI LABORATORY GROWN  
DIAMOND ID REPORT**

July 6, 2022  
IGI Report Number **LG530201095**  
**MARQUISE BRILLIANT**  
**7.46 X 3.73 X 2.22 MM**  
Carat Weight 0.36 CARAT  
Color Grade G  
Clarity Grade VVS 2  
Polish VERY GOOD  
Symmetry EXCELLENT  
Fluorescence NONE  
Inscription(s) LABGROWN IGI  
LG530201095

Comments: This Laboratory Grown Diamond was created by Chemical Vapor Deposition (CVD) growth process and may include post-growth treatment. Type IIa