



ELECTRONIC COPY

LABORATORY GROWN DIAMOND REPORT

June 2, 2022
IGI Report Number LG530201348
Description LABORATORY GROWN DIAMOND
Shape and Cutting Style SQUARE CUSHION BRILLIANT
Measurements 8.32 X 8.12 X 5.07 MM

GRADING RESULTS

Carat Weight 2.37 CARATS
Color Grade G
Clarity Grade VS 2

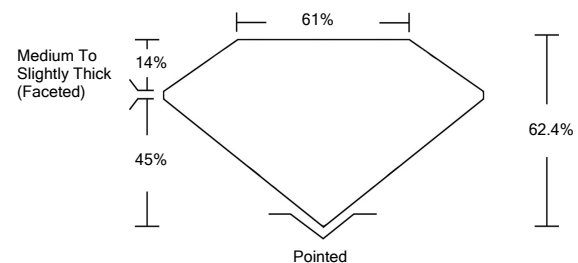
ADDITIONAL GRADING INFORMATION

Polish EXCELLENT
Symmetry EXCELLENT
Fluorescence NONE
Inscription(s) LABGROWN IGI LG530201348

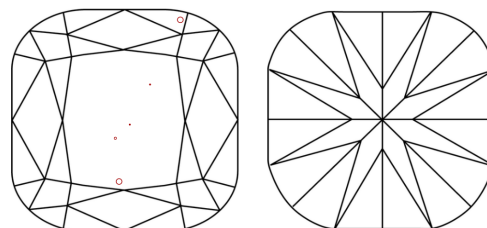
Comments: This Laboratory Grown Diamond was created by Chemical Vapor Deposition (CVD) growth process and may include post-growth treatment. Type IIa

LG530201348

PROPORTIONS



CLARITY CHARACTERISTICS



KEY TO SYMBOLS

Red symbols indicate internal characteristics.
Green symbols indicate external characteristics.

LABORATORY GROWN DIAMOND REPORT

LABORATORY GROWN DIAMOND REPORT

June 2, 2022
IGI Report Number LG530201348
Description LABORATORY GROWN DIAMOND
Shape and Cutting Style SQUARE CUSHION BRILLIANT
Measurements 8.32 X 8.12 X 5.07 MM

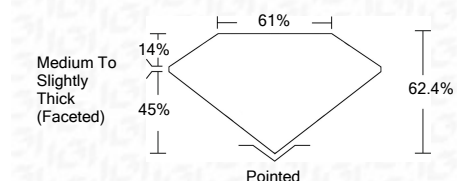
GRADING RESULTS

Carat Weight 2.37 CARATS
Color Grade G
Clarity Grade VS 2

ADDITIONAL GRADING INFORMATION

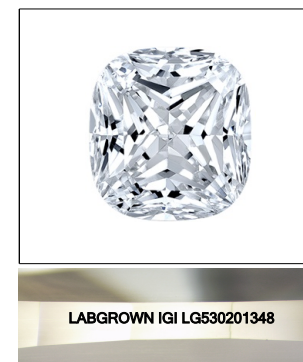
Polish EXCELLENT
Symmetry EXCELLENT
Fluorescence NONE
Inscription(s) LABGROWN IGI LG530201348

Comments: This Laboratory Grown Diamond was created by Chemical Vapor Deposition (CVD) growth process and may include post-growth treatment. Type IIa



GRADING SCALES

Table with 2 rows and 5 columns showing color and clarity grading scales. Row 1: Color Grading Scale (CL, NC, FT, VLT, LT) with corresponding descriptions. Row 2: Clarity (10x) Grading Scale (FL, IF, VVS, VS, SI, I) with corresponding descriptions.



LASERSCRIBE SM
Sample Image Used



June 2, 2022
IGI Report No. LG530201348
SQUARE CUSHION BRILLIANT
8.32 X 8.12 X 5.07 MM
Carat Weight 2.37 CARATS
Color Grade G
Clarity Grade VS 2
Depth 62.4%
Table 61%
Girdle Medium To Slightly Thick (Faceted)
Culet Pointed
Polish EXCELLENT
Symmetry EXCELLENT
Fluorescence NONE
Inscription(s) LABGROWN IGI LG530201348
Comments: This Laboratory Grown Diamond was created by Chemical Vapor Deposition (CVD) growth process and may include post-growth treatment. Type IIa