



**ELECTRONIC COPY**

**LABORATORY GROWN DIAMOND REPORT**

June 10, 2022  
 IGI Report Number **LG530201446**  
 Description **LABORATORY GROWN  
DIAMOND**  
 Shape and Cutting Style **ROUND BRILLIANT**  
 Measurements **7.44 - 7.46 X 4.59 MM**

**GRADING RESULTS**

Carat Weight **1.57 CARAT**  
 Color Grade **H**  
 Clarity Grade **VS 1**  
 Cut Grade **IDEAL**

**ADDITIONAL GRADING INFORMATION**

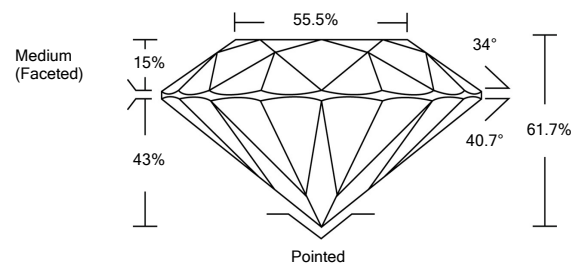
Polish **EXCELLENT**  
 Symmetry **EXCELLENT**  
 Fluorescence **NONE**

Inscription(s) **LABGROWN IGI LG530201446**

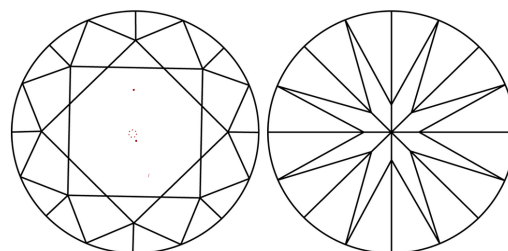
Comments: This Laboratory Grown Diamond was created by Chemical Vapor Deposition (CVD) growth process and may include post-growth treatment.  
 Type IIa

LG530201446

**PROPORTIONS**



**CLARITY CHARACTERISTICS**



**KEY TO SYMBOLS**

Red symbols indicate internal characteristics.  
 Green symbols indicate external characteristics.

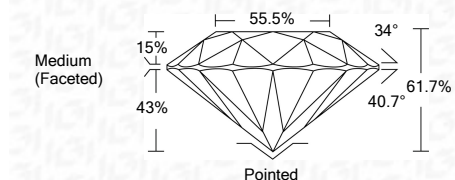
**GRADING SCALES**

|                             |                              |                             |                        |                   |           |   |
|-----------------------------|------------------------------|-----------------------------|------------------------|-------------------|-----------|---|
| COLOR GRADING SCALE         | CL                           | NC                          | FT                     | VL                | LT        |   |
|                             | COLORLESS D-F                | NEAR COLORLESS G-J          | FAINT K-M              | VERY LIGHT N-R    | LIGHT S-Z |   |
| CLARITY (10x) GRADING SCALE | FL                           | IF                          | VVS                    | VS                | SI        | I |
|                             | FLAWLESS INTERNALLY FLAWLESS | VERY VERY SLIGHTLY INCLUDED | VERY SLIGHTLY INCLUDED | SLIGHTLY INCLUDED | INCLUDED  |   |

June 10, 2022  
 IGI Report Number **LG530201446**  
 Description **LABORATORY GROWN  
DIAMOND**  
 Shape and Cutting Style **ROUND BRILLIANT**  
 Measurements **7.44 - 7.46 X 4.59 MM**

**GRADING RESULTS**

Carat Weight **1.57 CARAT**  
 Color Grade **H**  
 Clarity Grade **VS 1**  
 Cut Grade **IDEAL**

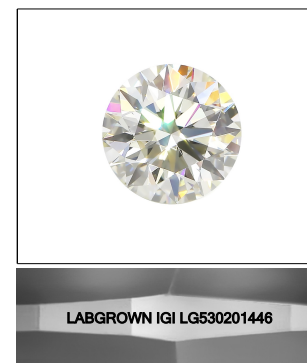


**ADDITIONAL GRADING INFORMATION**

Polish **EXCELLENT**  
 Symmetry **EXCELLENT**  
 Fluorescence **NONE**

Inscription(s) **LABGROWN IGI LG530201446**

Comments: This Laboratory Grown Diamond was created by Chemical Vapor Deposition (CVD) growth process and may include post-growth treatment.  
 Type IIa



**LASERSCRIBE<sup>SM</sup>**

Sample Image Used



|                            |                  |       |              |
|----------------------------|------------------|-------|--------------|
| IGI Report No. LG530201446 | 1.57 CARAT       | H     | Pointed      |
| ROUND BRILLIANT            | VS 1             | IDEAL | EXCELLENT    |
| 7.44 - 7.46 X 4.59 MM      | 61.7%            | 55.5% | EXCELLENT    |
| Carat Weight               | Medium (Faceted) |       | NONE         |
| Color Grade                |                  |       | LABGROWN IGI |
| Clarity Grade              |                  |       | LG530201446  |
| Cut Grade                  |                  |       |              |
| Depth                      |                  |       |              |
| Table                      |                  |       |              |
| Girdle                     |                  |       |              |
| Culet                      |                  |       |              |
| Polish                     |                  |       |              |
| Symmetry                   |                  |       |              |
| Fluorescence               |                  |       |              |
| Inscription(s)             |                  |       |              |

Comments: This Laboratory Grown Diamond was created by Chemical Vapor Deposition (CVD) growth process and may include post-growth treatment.  
 Type IIa