



ELECTRONIC COPY

LABORATORY GROWN DIAMOND REPORT

June 13, 2022
IGI Report Number LG530201533
Description LABORATORY GROWN DIAMOND
Shape and Cutting Style CUT CORNERED RECTANGULAR MODIFIED BRILLIANT
Measurements 8.38 X 6.22 X 3.80 MM

GRADING RESULTS

Carat Weight 1.60 CARAT
Color Grade F
Clarity Grade VS 1

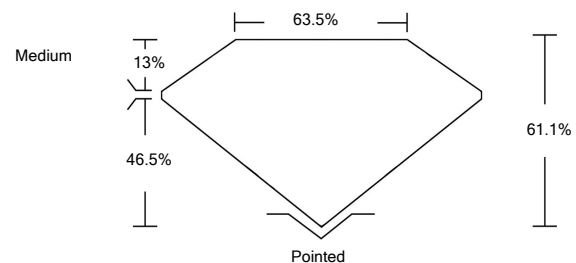
ADDITIONAL GRADING INFORMATION

Polish EXCELLENT
Symmetry EXCELLENT
Fluorescence NONE
Inscription(s) LABGROWN IGI LG530201533

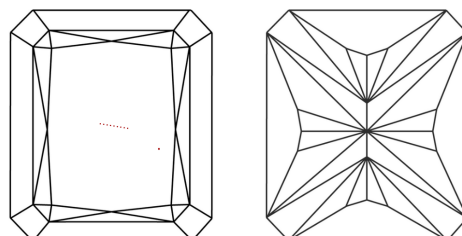
Comments: This Laboratory Grown Diamond was created by Chemical Vapor Deposition (CVD) growth process and may include post-growth treatment. Type IIa

LG530201533

PROPORTIONS



CLARITY CHARACTERISTICS

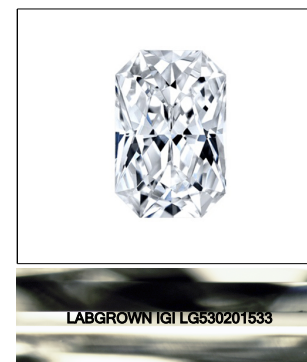


KEY TO SYMBOLS

Red symbols indicate internal characteristics.
Green symbols indicate external characteristics.

GRADING SCALES

Table with 2 rows and 5 columns. Row 1: COLOR GRADING SCALE (CL, NC, FT, VLT, LT) with corresponding color descriptions. Row 2: CLARITY (10x) GRADING SCALE (FL, IF, VVS, VS, SI, I) with corresponding clarity descriptions.



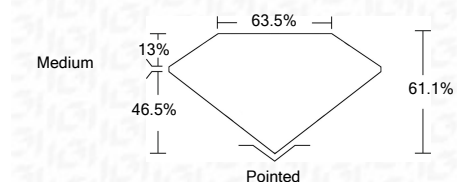
LASERSCRIBE SM

Sample Image Used

June 13, 2022
IGI Report Number LG530201533
Description LABORATORY GROWN DIAMOND
Shape and Cutting Style CUT CORNERED RECTANGULAR MODIFIED BRILLIANT
Measurements 8.38 X 6.22 X 3.80 MM

GRADING RESULTS

Carat Weight 1.60 CARAT
Color Grade F
Clarity Grade VS 1



ADDITIONAL GRADING INFORMATION

Polish EXCELLENT
Symmetry EXCELLENT
Fluorescence NONE

Inscription(s) LABGROWN IGI LG530201533

Comments: This Laboratory Grown Diamond was created by Chemical Vapor Deposition (CVD) growth process and may include post-growth treatment. Type IIa



IGI



Summary table containing report details: IGI Report No. LG530201533, CUT CORNERED RECT. MODIFIED BRILLIANT, 8.38 X 6.22 X 3.80 MM, 1.60 CARAT, F, VS 1, 61.1% table, 63.5% depth, Medium grade, Pointed cut, EXCELLENT polish and symmetry, NONE fluorescence, LABGROWN IGI LG530201533 inscription.

Comments: This Laboratory Grown Diamond was created by Chemical Vapor Deposition (CVD) growth process and may include post-growth treatment. Type IIa