



ELECTRONIC COPY

LABORATORY GROWN DIAMOND REPORT

June 15, 2022
IGI Report Number LG530201639
Description LABORATORY GROWN DIAMOND
Shape and Cutting Style SQUARE CUSHION BRILLIANT
Measurements 7.94 X 7.80 X 4.85 MM

GRADING RESULTS

Carat Weight 2.02 CARATS
Color Grade G
Clarity Grade VS 1

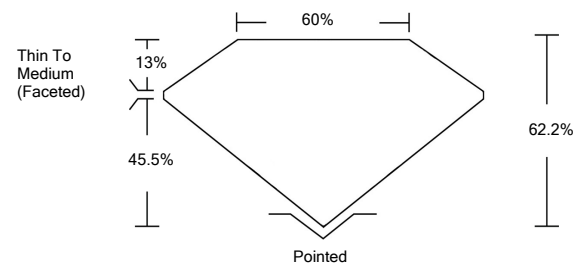
ADDITIONAL GRADING INFORMATION

Polish EXCELLENT
Symmetry EXCELLENT
Fluorescence NONE
Inscription(s) LABGROWN IGI LG530201639

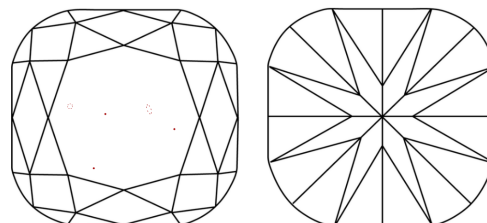
Comments: This Laboratory Grown Diamond was created by Chemical Vapor Deposition (CVD) growth process and may include post-growth treatment. Type IIa

LG530201639

PROPORTIONS



CLARITY CHARACTERISTICS



KEY TO SYMBOLS

Red symbols indicate internal characteristics.
Green symbols indicate external characteristics.

GRADING SCALES

Table with 2 rows and 5 columns. Row 1: COLOR GRADING SCALE (CL, NC, FT, VLT, LT) with corresponding color descriptions. Row 2: CLARITY (10x) GRADING SCALE (FL, IF, VVS, VS, SI, I) with corresponding clarity descriptions.

June 15, 2022
IGI Report Number LG530201639
Description LABORATORY GROWN DIAMOND
Shape and Cutting Style SQUARE CUSHION BRILLIANT
Measurements 7.94 X 7.80 X 4.85 MM

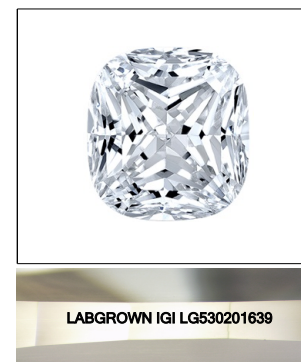
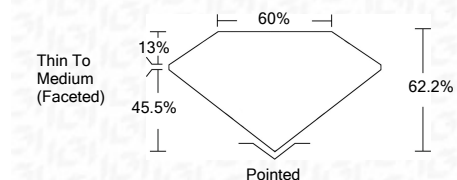
GRADING RESULTS

Carat Weight 2.02 CARATS
Color Grade G
Clarity Grade VS 1

ADDITIONAL GRADING INFORMATION

Polish EXCELLENT
Symmetry EXCELLENT
Fluorescence NONE
Inscription(s) LABGROWN IGI LG530201639

Comments: This Laboratory Grown Diamond was created by Chemical Vapor Deposition (CVD) growth process and may include post-growth treatment. Type IIa



LASERSCRIBE<sup>SM</sup>

Sample Image Used



IGI

June 15, 2022
IGI Report No. LG530201639
SQUARE CUSHION BRILLIANT
7.94 X 7.80 X 4.85 MM
Carat Weight 2.02 CARATS
Color Grade G
Clarity Grade VS 1
Depth 62.2%
Table 60%
Girdle Thin To Medium (Faceted)
Culet Pointed
Polish EXCELLENT
Symmetry EXCELLENT
Fluorescence NONE
Inscription(s) LABGROWN IGI LG530201639
Comments:

This Laboratory Grown Diamond was created by Chemical Vapor Deposition (CVD) growth process and may include post-growth treatment. Type IIa