

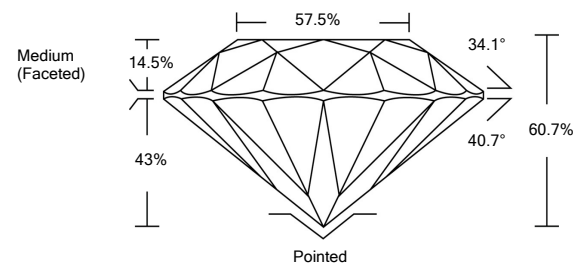


**ELECTRONIC COPY**

**LABORATORY GROWN DIAMOND REPORT**

LG530208178

**PROPORTIONS**



**GRADING SCALES**

COLOR GRADING SCALE	CL	NC	FT	VL	LT	
	COLORLESS D-F	NEAR COLORLESS G-J	FAINT K-M	VERY LIGHT N-R	LIGHT S-Z	
CLARITY (10x) GRADING SCALE	FL	IF	VVS	VS	SI	I
	FLAWLESS INTERNALLY FLAWLESS	VERY VERY SLIGHTLY INCLUDED	VERY SLIGHTLY INCLUDED	SLIGHTLY INCLUDED	INCLUDED	

May 25, 2022  
 IGI Report Number **LG530208178**  
 Description **LABORATORY GROWN DIAMOND**  
 Shape and Cutting Style **ROUND BRILLIANT**  
 Measurements **8.27 - 8.30 X 5.03 MM**

**GRADING RESULTS**

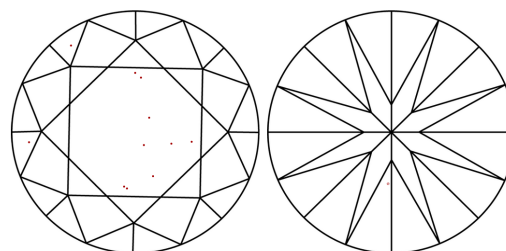
Carat Weight **2.11 CARATS**  
 Color Grade **F**  
 Clarity Grade **VS 2**  
 Cut Grade **IDEAL**

**ADDITIONAL GRADING INFORMATION**

Polish **EXCELLENT**  
 Symmetry **EXCELLENT**  
 Fluorescence **NONE**  
 Inscription(s) **LABGROWN IGI LG530208178**

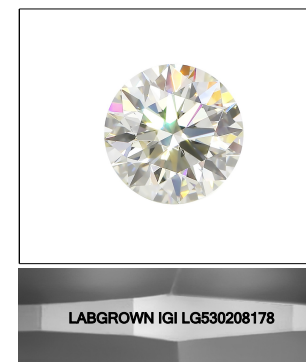
Comments: HEARTS & ARROWS  
 This Laboratory Grown Diamond was created by Chemical Vapor Deposition (CVD) growth process and may include post-growth treatment.  
 Type IIa

**CLARITY CHARACTERISTICS**



**KEY TO SYMBOLS**

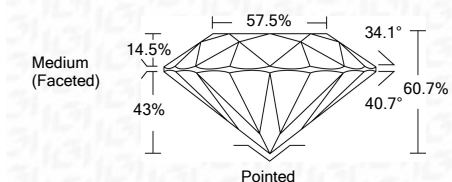
Red symbols indicate internal characteristics.  
 Green symbols indicate external characteristics.



**LASERSCRIBE<sup>SM</sup>**

Sample Image Used

May 25, 2022  
 IGI Report Number **LG530208178**  
 Description **LABORATORY GROWN DIAMOND**  
 Shape and Cutting Style **ROUND BRILLIANT**  
 Measurements **8.27 - 8.30 X 5.03 MM**  
**GRADING RESULTS**  
 Carat Weight **2.11 CARATS**  
 Color Grade **F**  
 Clarity Grade **VS 2**  
 Cut Grade **IDEAL**



**ADDITIONAL GRADING INFORMATION**

Polish **EXCELLENT**  
 Symmetry **EXCELLENT**  
 Fluorescence **NONE**  
 Inscription(s) **LABGROWN IGI LG530208178**  
 Comments: HEARTS & ARROWS  
 This Laboratory Grown Diamond was created by Chemical Vapor Deposition (CVD) growth process and may include post-growth treatment.  
 Type IIa



**IGI**

May 25, 2022  
 IGI Report No. LG530208178  
**ROUND BRILLIANT**  
 8.27 - 8.30 X 5.03 MM  
 Carat Weight **2.11 CARATS**  
 Color Grade **F**  
 Clarity Grade **VS 2**  
 Cut Grade **IDEAL**  
 Depth **60.7%**  
 Table **14.5%**  
 Girdle **Medium (Faceted)**  
 Culet **Pointed**  
 Polish **EXCELLENT**  
 Symmetry **EXCELLENT**  
 Fluorescence **NONE**  
 Inscription(s) **LABGROWN IGI LG530208178**  
 Comments: **HEARTS & ARROWS**  
 This Laboratory Grown Diamond was created by Chemical Vapor Deposition (CVD) growth process and may include post-growth treatment.  
 Type IIa

