

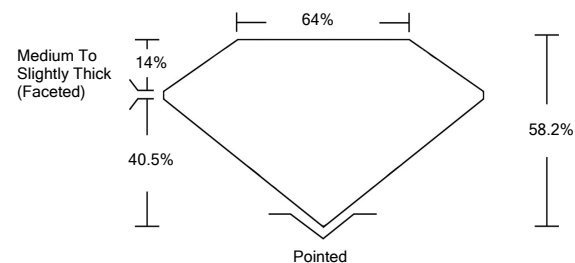


ELECTRONIC COPY

LABORATORY GROWN DIAMOND REPORT

LG530215224

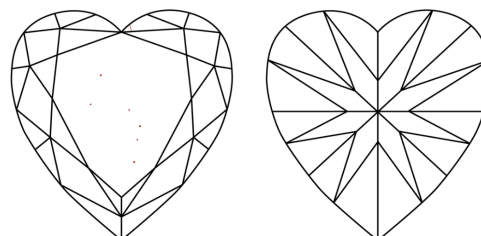
PROPORTIONS



GRADING SCALES

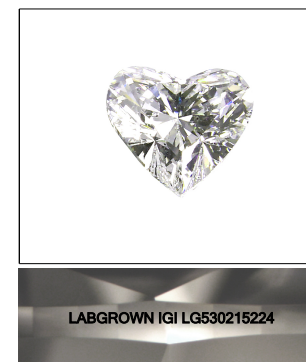
COLOR GRADING SCALE	CL	NC	FT	VLT	LT	
	COLORLESS D-F	NEAR COLORLESS G-J	FAINT K-M	VERY LIGHT N-R	LIGHT S-Z	
CLARITY (10x) GRADING SCALE	FL	IF	VVS	VS	SI	I
	FLAWLESS INTERNALLY FLAWLESS	VERY VERY SLIGHTLY INCLUDED	VERY SLIGHTLY INCLUDED	SLIGHTLY INCLUDED	INCLUDED	

CLARITY CHARACTERISTICS



KEY TO SYMBOLS

Red symbols indicate internal characteristics.
Green symbols indicate external characteristics.



LABGROWN IGI LG530215224

LASERSCRIBESM

Sample Image Used

May 31, 2022

IGI Report Number

LG530215224

Description

**LABORATORY GROWN
DIAMOND**

Shape and Cutting Style

HEART BRILLIANT

Measurements

6.91 X 8.03 X 4.67 MM

GRADING RESULTS

Carat Weight

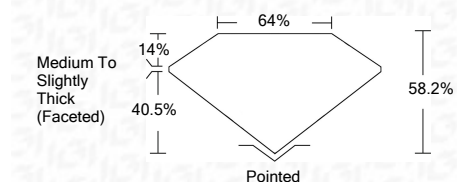
1.50 CARAT

Color Grade

F

Clarity Grade

VS 2



ADDITIONAL GRADING INFORMATION

Polish

EXCELLENT

Symmetry

EXCELLENT

Fluorescence

NONE

Inscription(s)

LABGROWN IGI LG530215224

Comments: This Laboratory Grown Diamond was created by Chemical Vapor Deposition (CVD) growth process and may include post-growth treatment.

Type IIa



IGI

IGI Report No. LG530215224	HEART BRILLIANT	6.91 X 8.03 X 4.67 MM	1.50 CARAT	F	VS 2	58.2%	64%	Medium To Slightly Thick (Faceted)	Pointed	EXCELLENT	EXCELLENT	NONE	LABGROWN IGI LG530215224
May 31, 2022	Color Grade	Clarity Grade	Depth	Table	Girdle	Culet	Polish	Symmetry	Fluorescence	Inscription(s)	Comments:	This Laboratory Grown Diamond was created by Chemical Vapor Deposition (CVD) growth process and may include post-growth treatment. Type IIa	