



ELECTRONIC COPY

LABORATORY GROWN DIAMOND REPORT

May 28, 2022
 IGI Report Number **LG530216170**
 Description **LABORATORY GROWN
DIAMOND**
 Shape and Cutting Style **ROUND BRILLIANT**
 Measurements **11.05 - 11.09 X 6.90 MM**

GRADING RESULTS

Carat Weight **5.26 CARATS**
 Color Grade **H**
 Clarity Grade **VS 1**
 Cut Grade **IDEAL**

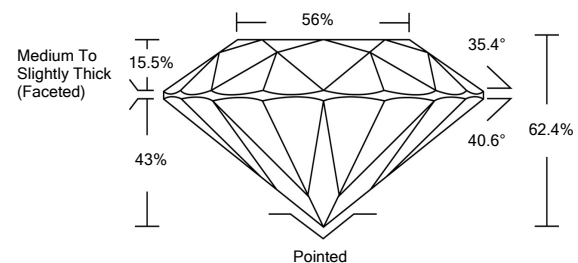
ADDITIONAL GRADING INFORMATION

Polish **EXCELLENT**
 Symmetry **EXCELLENT**
 Fluorescence **NONE**
 Inscription(s) **LABGROWN IGI LG530216170**

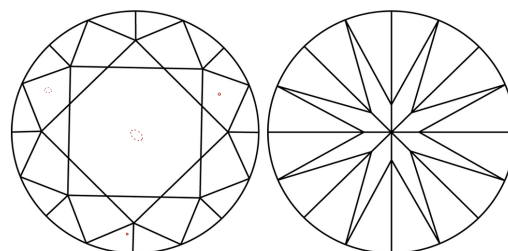
Comments: HEARTS & ARROWS
 This Laboratory Grown Diamond was created by Chemical Vapor Deposition (CVD) growth process and may include post-growth treatment.
 Type IIa

LG530216170

PROPORTIONS

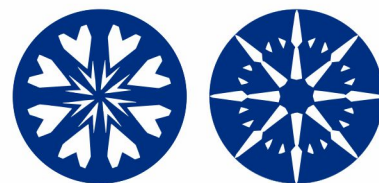


CLARITY CHARACTERISTICS



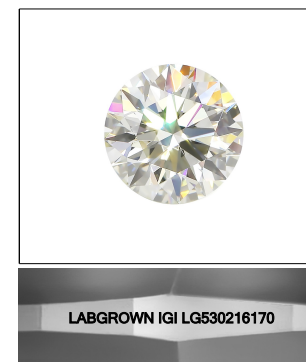
KEY TO SYMBOLS

Red symbols indicate internal characteristics.
 Green symbols indicate external characteristics.



GRADING SCALES

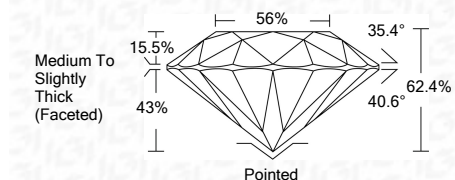
COLOR GRADING SCALE	CL	NC	FT	VL	LT	
	COLORLESS D-F	NEAR COLORLESS G-J	FAINT K-M	VERY LIGHT N-R	LIGHT S-Z	
CLARITY (10x) GRADING SCALE	FL	IF	VVS	VS	SI	I
	FLAWLESS INTERNALLY FLAWLESS	VERY VERY SLIGHTLY INCLUDED	VERY SLIGHTLY INCLUDED	SLIGHTLY INCLUDED	INCLUDED	



LASERSCRIBESM

Sample Image Used

May 28, 2022
 IGI Report Number **LG530216170**
 Description **LABORATORY GROWN
DIAMOND**
 Shape and Cutting Style **ROUND BRILLIANT**
 Measurements **11.05 - 11.09 X 6.90 MM**
GRADING RESULTS
 Carat Weight **5.26 CARATS**
 Color Grade **H**
 Clarity Grade **VS 1**
 Cut Grade **IDEAL**



ADDITIONAL GRADING INFORMATION

Polish **EXCELLENT**
 Symmetry **EXCELLENT**
 Fluorescence **NONE**
 Inscription(s) **LABGROWN IGI LG530216170**

Comments: HEARTS & ARROWS
 This Laboratory Grown Diamond was created by Chemical Vapor Deposition (CVD) growth process and may include post-growth treatment.
 Type IIa



May 28, 2022	IGI Report No. LG530216170	5.26 CARATS	H
ROUND BRILLIANT	11.05 - 11.09 X 6.90 MM	VS 1	IDEAL
Carat Weight	Color Grade	Clarity Grade	Cut Grade
5.26 CARATS	H	VS 1	IDEAL
Depth	Table	Girdle	Culet
62.4%	56%	Medium To Slightly Thick (Faceted)	Pointed
Symmetry	Fluorescence	Inscription(s)	Polish
EXCELLENT	NONE	LABGROWN IGI LG530216170	EXCELLENT
Comments: HEARTS & ARROWS			
This Laboratory Grown Diamond was created by Chemical Vapor Deposition (CVD) growth process and may include post-growth treatment.			
Type IIa			