



ELECTRONIC COPY

LABORATORY GROWN DIAMOND REPORT

June 29, 2022	
IGI Report Number	LG530217741
Description	LABORATORY GROWN DIAMOND
Shape and Cutting Style	ROUND BRILLIANT
Measurements	8.30 - 8.35 X 5.16 MM

GRADING RESULTS

Carat Weight	2.20 CARATS
Color Grade	F
Clarity Grade	VVS 2
Cut Grade	IDEAL

ADDITIONAL GRADING INFORMATION

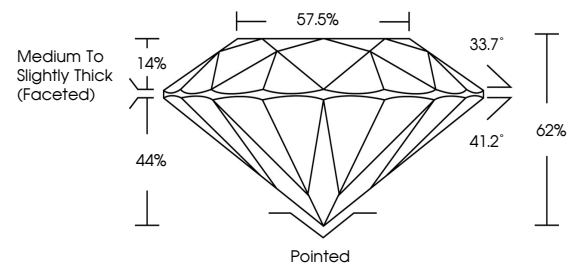
Polish	EXCELLENT
Symmetry	EXCELLENT
Fluorescence	NONE

Inscription(s) LABGROWN IGI LG530217741

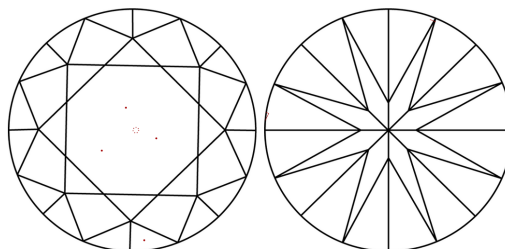
Comments: This Laboratory Grown Diamond was created by Chemical Vapor Deposition (CVD) growth process and may include post-growth treatment.
Type IIa

LG530217741

PROPORTIONS



CLARITY CHARACTERISTICS

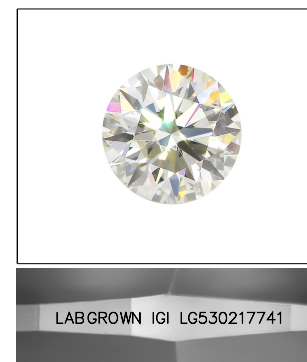


KEY TO SYMBOLS

Red symbols indicate internal characteristics.
Green symbols indicate external characteristics.

GRADING SCALES

COLOR GRADING SCALE	CL		NC		FT		VLT		LT	
	COLORLESS D-F		NEAR COLORLESS G-J		FAINT K-M		VERY LIGHT N-R		LIGHT S-Z	
CLARITY (10x) GRADING SCALE	FL	IF	VVS		VS		SI		I	
	FLAWLESS INTERNALLY FLAWLESS		VERY VERY SLIGHTLY INCLUDED		VERY SLIGHTLY INCLUDED		SLIGHTLY INCLUDED		INCLUDED	

LASERSCRIBESM

Sample Image Used



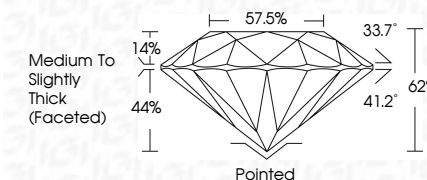
© IGI 2020, International Gemological Institute

FD - 10 20

www.igi.org

LABORATORY GROWN DIAMOND REPORT

June 29, 2022	
IGI Report Number	LG530217741
Description	LABORATORY GROWN DIAMOND
Shape and Cutting Style	ROUND BRILLIANT
Measurements	8.30 - 8.35 X 5.16 MM
GRADING RESULTS	
Carat Weight	2.20 CARATS
Color Grade	F
Clarity Grade	VVS 2
Cut Grade	IDEAL



ADDITIONAL GRADING INFORMATION

Polish	EXCELLENT
Symmetry	EXCELLENT
Fluorescence	NONE
Inscription(s)	LABGROWN IGI LG530217741

Inscription(s) LABGROWN IGI LG530217741

Comments: This Laboratory Grown Diamond was created by Chemical Vapor Deposition (CVD) growth process and may include post-growth treatment.
Type IIa



June 29, 2022	GI Report No. LG530217741	2.20 CARATS	Polished
ROUND BRILLIANT	3.90 - 6.95 X 5.16 MM	F	EXCELLENT
		VVS 2	EXCELLENT
		IDEAL	EXCELLENT
		57.5%	NONE
		Medium To Slightly Thick (faceted)	LABGROWN LG1 LG530217741
			Comments:
			This Laboratory Grown Diamond was created by Chemical Vapor Deposition (CVD) growth process and may include surface treatment.
			Page 1/1