



ELECTRONIC COPY

LABORATORY GROWN DIAMOND REPORT

June 8, 2022
IGI Report Number LG530218109
Description LABORATORY GROWN DIAMOND
Shape and Cutting Style ROUND BRILLIANT
Measurements 8.62 - 8.66 X 5.32 MM

GRADING RESULTS

Carat Weight 2.43 CARATS
Color Grade G
Clarity Grade VVS 2
Cut Grade IDEAL

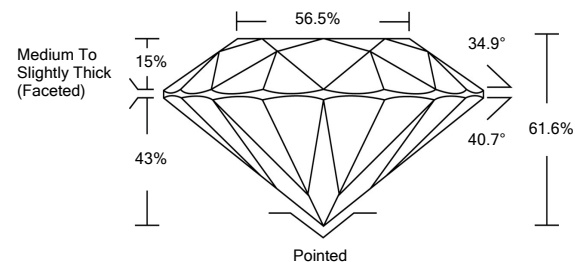
ADDITIONAL GRADING INFORMATION

Polish EXCELLENT
Symmetry EXCELLENT
Fluorescence NONE
Inscription(s) LABGROWN IGI LG530218109

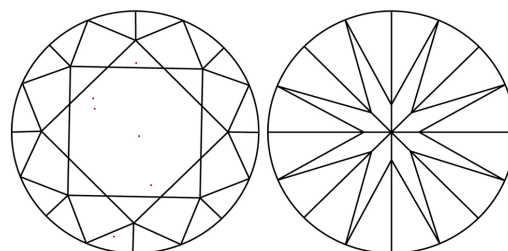
Comments: HEARTS & ARROWS
This Laboratory Grown Diamond was created by Chemical Vapor Deposition (CVD) growth process and may include post-growth treatment.
Type IIa

LG530218109

PROPORTIONS



CLARITY CHARACTERISTICS



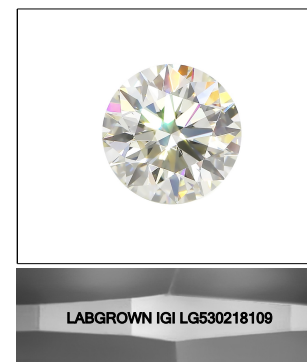
KEY TO SYMBOLS

Red symbols indicate internal characteristics.
Green symbols indicate external characteristics.



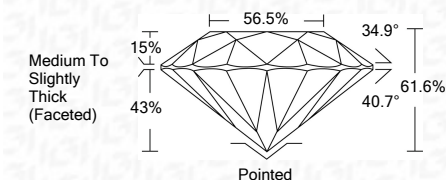
GRADING SCALES

Table showing color grading scales (CL, NC, FT, VLT, LT) and clarity grading scales (FL, IF, VVS, VS, SI, I) with their corresponding descriptions.



LASERSCRIBE SM
Sample Image Used

June 8, 2022
IGI Report Number LG530218109
Description LABORATORY GROWN DIAMOND
Shape and Cutting Style ROUND BRILLIANT
Measurements 8.62 - 8.66 X 5.32 MM
GRADING RESULTS
Carat Weight 2.43 CARATS
Color Grade G
Clarity Grade VVS 2
Cut Grade IDEAL



ADDITIONAL GRADING INFORMATION

Polish EXCELLENT
Symmetry EXCELLENT
Fluorescence NONE
Inscription(s) LABGROWN IGI LG530218109
Comments: HEARTS & ARROWS
This Laboratory Grown Diamond was created by Chemical Vapor Deposition (CVD) growth process and may include post-growth treatment.
Type IIa



June 8, 2022
IGI Report No. LG530218109
ROUND BRILLIANT
8.62 - 8.66 X 5.32 MM
Carat Weight 2.43 CARATS
Color Grade G
Clarity Grade VVS 2
Cut Grade IDEAL
Depth 61.6%
Table 56.5%
Girdle Medium To Slightly Thick (Faceted)
Culet Pointed
Polish EXCELLENT
Symmetry EXCELLENT
Fluorescence NONE
Inscriptions(s) LABGROWN IGI LG530218109
Comments: HEARTS & ARROWS
This Laboratory Grown Diamond was created by Chemical Vapor Deposition (CVD) growth process and may include post-growth treatment.
Type IIa