



**ELECTRONIC COPY**

**LABORATORY GROWN DIAMOND REPORT**

June 24, 2022  
 IGI Report Number **LG530218197**  
 Description **LABORATORY GROWN  
DIAMOND**  
 Shape and Cutting Style **ROUND BRILLIANT**  
 Measurements **8.56 - 8.63 X 5.28 MM**

**GRADING RESULTS**

Carat Weight **2.41 CARATS**  
 Color Grade **H**  
 Clarity Grade **VS 1**  
 Cut Grade **IDEAL**

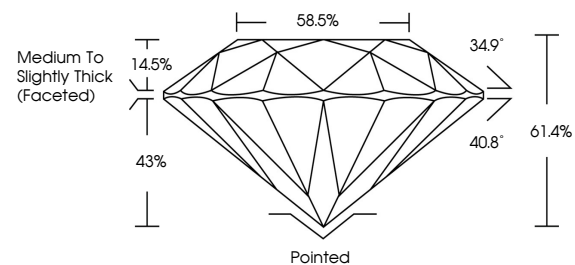
**ADDITIONAL GRADING INFORMATION**

Polish **EXCELLENT**  
 Symmetry **EXCELLENT**  
 Fluorescence **NONE**  
 Inscription(s) **LABGROWN IGI LG530218197**

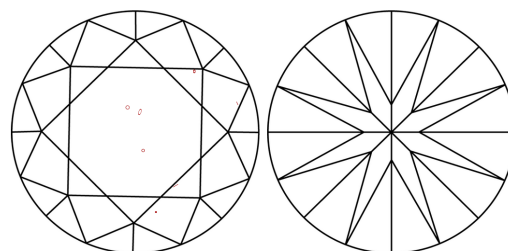
Comments: HEARTS & ARROWS  
 This Laboratory Grown Diamond was created by  
 Chemical Vapor Deposition (CVD) growth process and  
 may include post-growth treatment.  
 Type IIa

LG530218197

**PROPORTIONS**



**CLARITY CHARACTERISTICS**



**KEY TO SYMBOLS**

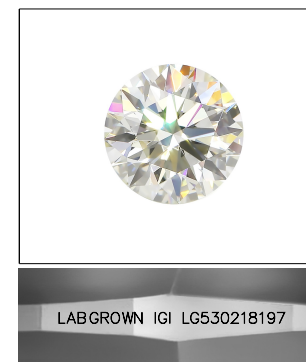
Red symbols indicate internal characteristics.  
 Green symbols indicate external characteristics.



www.igi.org

**GRADING SCALES**

COLOR GRADING SCALE	CL	NC	FT	VLT	LT	
	COLORLESS D-F	NEAR COLORLESS G-J	FAINT K-M	VERY LIGHT N-R	LIGHT S-Z	
CLARITY (10x) GRADING SCALE	FL	IF	VVS	VS	SI	I
	FLAWLESS INTERNALLY FLAWLESS	VERY VERY SLIGHTLY INCLUDED	VERY SLIGHTLY INCLUDED	SLIGHTLY INCLUDED	INCLUDED	

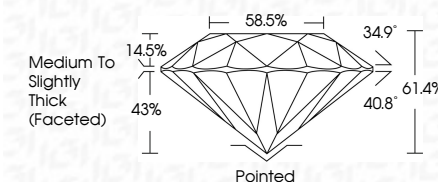


LABGROWN IGI LG530218197

LASERSCRIBE<sup>SM</sup>

Sample Image Used

June 24, 2022  
 IGI Report Number **LG530218197**  
 Description **LABORATORY GROWN  
DIAMOND**  
 Shape and Cutting Style **ROUND BRILLIANT**  
 Measurements **8.56 - 8.63 X 5.28 MM**  
**GRADING RESULTS**  
 Carat Weight **2.41 CARATS**  
 Color Grade **H**  
 Clarity Grade **VS 1**  
 Cut Grade **IDEAL**



**ADDITIONAL GRADING INFORMATION**

Polish **EXCELLENT**  
 Symmetry **EXCELLENT**  
 Fluorescence **NONE**  
 Inscription(s) **LABGROWN IGI LG530218197**

Comments: HEARTS & ARROWS  
 This Laboratory Grown Diamond was created by  
 Chemical Vapor Deposition (CVD) growth process and  
 may include post-growth treatment.  
 Type IIa



**IGI**

June 24, 2022	IGI Report No LG530218197	2.41 CARATS	H
ROUND BRILLIANT	8.56 - 8.63 X 5.28 MM	VS 1	IDEAL
Carat Weight	Color Grade	Depth	61.4%
2.41 CARATS	H	Table	58.5%
Color Grade	VS 1	Crown Angle	34.9°
VS 1	IDEAL	Pavilion Angle	40.8°
61.4%	58.5%	Total Depth	61.4%
58.5%	34.9°	Crown Height	14.5%
34.9°	40.8°	Pavilion Height	43%
14.5%	43%	Cut Grade	IDEAL
43%	61.4%	Polish	EXCELLENT
61.4%		Symmetry	EXCELLENT
		Fluorescence	NONE
		Inscription(s)	LABGROWN IGI LG530218197
		Comments:	HEARTS & ARROWS This Laboratory Grown Diamond was created by Chemical Vapor Deposition (CVD) growth process and may include post-growth treatment. Type IIa