



ELECTRONIC COPY

LABORATORY GROWN DIAMOND REPORT

July 6, 2022
IGI Report Number LG530218318
Description LABORATORY GROWN DIAMOND
Shape and Cutting Style ROUND BRILLIANT
Measurements 8.40 - 8.44 X 5.20 MM

GRADING RESULTS

Carat Weight 2.26 CARATS
Color Grade G
Clarity Grade VVS 2
Cut Grade IDEAL

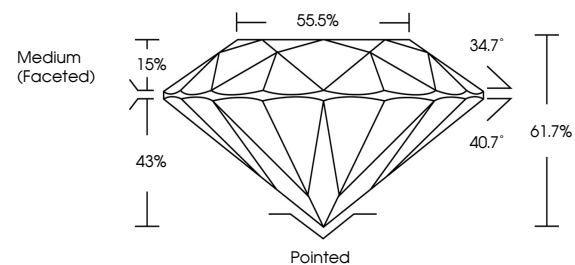
ADDITIONAL GRADING INFORMATION

Polish EXCELLENT
Symmetry EXCELLENT
Fluorescence NONE
Inscription(s) LABGROWN IGI LG530218318

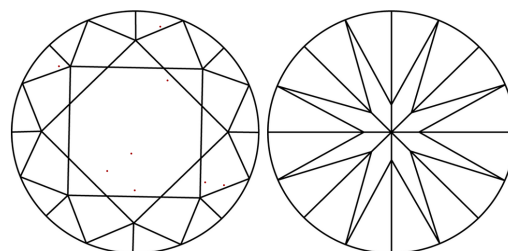
Comments: HEARTS & ARROWS
This Laboratory Grown Diamond was created by Chemical Vapor Deposition (CVD) growth process and may include post-growth treatment.
Type IIa

LG530218318

PROPORTIONS

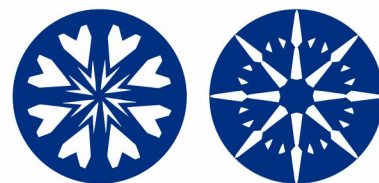


CLARITY CHARACTERISTICS



KEY TO SYMBOLS

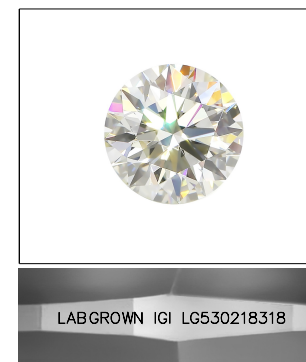
Red symbols indicate internal characteristics.
Green symbols indicate external characteristics.



www.igi.org

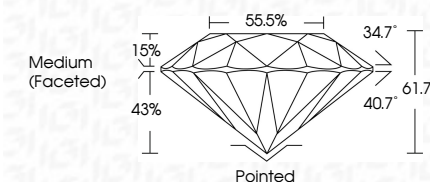
GRADING SCALES

Table with 2 columns: COLOR GRADING SCALE and CLARITY (10x) GRADING SCALE. Rows include CL, NC, FT, VLT, LT and FL, IF, VVS, VS, SI, I.



LASERSCRIBE SM
Sample Image Used

July 6, 2022
IGI Report Number LG530218318
Description LABORATORY GROWN DIAMOND
Shape and Cutting Style ROUND BRILLIANT
Measurements 8.40 - 8.44 X 5.20 MM
GRADING RESULTS
Carat Weight 2.26 CARATS
Color Grade G
Clarity Grade VVS 2
Cut Grade IDEAL



ADDITIONAL GRADING INFORMATION
Polish EXCELLENT
Symmetry EXCELLENT
Fluorescence NONE
Inscription(s) LABGROWN IGI LG530218318
Comments: HEARTS & ARROWS
This Laboratory Grown Diamond was created by Chemical Vapor Deposition (CVD) growth process and may include post-growth treatment.
Type IIa



July 6, 2022
IGI Report No LG530218318
ROUND BRILLIANT
8.40 - 8.44 X 5.20 MM
Carat Weight 2.26 CARATS
Color Grade G
Clarity Grade VVS 2
Cut Grade IDEAL
Depth 61.7%
Table 55.5%
Grade Medium (Faceted)
Culet Pointed
Polish EXCELLENT
Symmetry EXCELLENT
Fluorescence NONE
Inscription(s) LABGROWN IGI LG530218318
Comments: HEARTS & ARROWS
This Laboratory Grown Diamond was created by Chemical Vapor Deposition (CVD) growth process and may include post-growth treatment.
Type IIa

