



**INTERNATIONAL  
GEMOLOGICAL  
INSTITUTE**

**ELECTRONIC COPY**

**LABORATORY GROWN  
DIAMOND REPORT**

**IGI LABORATORY GROWN  
DIAMOND ID REPORT**

August 10, 2022  
IGI Report Number **LG530224406**

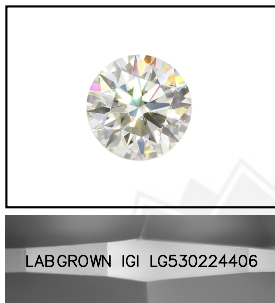
**LABORATORY GROWN DIAMOND REPORT**

**LG530224406**

**ROUND BRILLIANT**  
**6.18 - 6.20 X 3.83 MM**  
Carat Weight 0.91 CARAT  
Color Grade K  
Clarity Grade VVS 2  
Cut Grade IDEAL  
Polish EXCELLENT  
Symmetry EXCELLENT  
Fluorescence NONE  
Inscription(s) LABGROWN IGI  
LG530224406

**IGI LABORATORY GROWN DIAMOND IDENTIFICATION REPORT**

August 10, 2022  
IGI Report Number LG530224406  
Description LABORATORY GROWN DIAMOND  
Shape and Cutting Style ROUND BRILLIANT  
Measurements 6.18 - 6.20 X 3.83 MM



Comments: This Laboratory Grown Diamond was created by Chemical Vapor Deposition (CVD) growth process and may include post-growth treatment.  
Type IIa  
Faint Brown

**GRADING RESULTS**

Carat Weight 0.91 CARAT  
Color Grade K  
Clarity Grade VVS 2  
Cut Grade IDEAL

**LASERSCRIBE<sup>SM</sup>**  
Sample Images Used



**ADDITIONAL GRADING INFORMATION**

Polish EXCELLENT  
Symmetry EXCELLENT  
Fluorescence NONE  
Inscription(s) LABGROWN IGI LG530224406

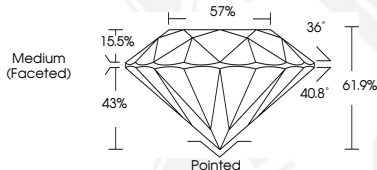
**IGI LABORATORY GROWN  
DIAMOND ID REPORT**

August 10, 2022  
IGI Report Number **LG530224406**

Comments: This Laboratory Grown Diamond was created by Chemical Vapor Deposition (CVD) growth process and may include post-growth treatment.  
Type IIa  
Faint Brown

**ROUND BRILLIANT**  
**6.18 - 6.20 X 3.83 MM**  
Carat Weight 0.91 CARAT  
Color Grade K  
Clarity Grade VVS 2  
Cut Grade IDEAL  
Polish EXCELLENT  
Symmetry EXCELLENT  
Fluorescence NONE  
Inscription(s) LABGROWN IGI  
LG530224406

Comments: This Laboratory Grown Diamond was created by Chemical Vapor Deposition (CVD) growth process and may include post-growth treatment.  
Type IIa  
Faint Brown



THIS DOCUMENT WAS PRODUCED WITH THE FOLLOWING SECURITY MEASURES: SPECIAL DOCUMENT PAPER, INK SCREENS, WATERMARK, BACKGROUND DESIGN, HOLOGRAM AND OTHER SECURITY FEATURES NOT LISTED AND DO EXCEED DOCUMENT SECURITY INDUSTRY GUIDELINES.

For terms & conditions and to verify this report, please visit [www.igi.org](http://www.igi.org)