



**INTERNATIONAL
GEMOLOGICAL
INSTITUTE**

ELECTRONIC COPY

**LABORATORY GROWN
DIAMOND REPORT**

**IGI LABORATORY GROWN
DIAMOND ID REPORT**

July 27, 2022
IGI Report Number **LG530225542**

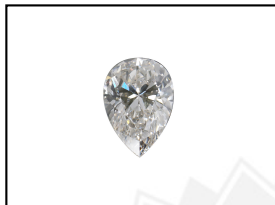
LABORATORY GROWN DIAMOND REPORT

LG530225542

PEAR BRILLIANT
7.54 X 5.00 X 3.18 MM
Carat Weight 0.70 CARAT
Color Grade G
Clarity Grade SI 2
Polish EXCELLENT
Symmetry EXCELLENT
Fluorescence NONE
Inscription(s) LABGROWN IGI
LG530225542

IGI LABORATORY GROWN DIAMOND IDENTIFICATION REPORT

July 27, 2022
IGI Report Number LG530225542
Description LABORATORY GROWN DIAMOND
Shape and Cutting Style PEAR BRILLIANT
Measurements 7.54 X 5.00 X 3.18 MM



Comments: This Laboratory Grown Diamond was created by Chemical Vapor Deposition (CVD) growth process and may include post-growth treatment. Type Ila

GRADING RESULTS

Carat Weight 0.70 CARAT
Color Grade G
Clarity Grade SI 2

LASERSCRIBESM
Sample Images Used



ADDITIONAL GRADING INFORMATION

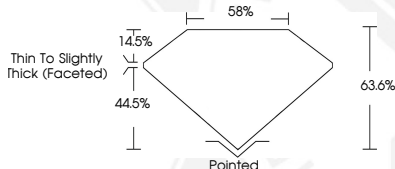
Polish EXCELLENT
Symmetry EXCELLENT
Fluorescence NONE
Inscription(s) LABGROWN IGI LG530225542

**IGI LABORATORY GROWN
DIAMOND ID REPORT**

July 27, 2022
IGI Report Number **LG530225542**

PEAR BRILLIANT
7.54 X 5.00 X 3.18 MM
Carat Weight 0.70 CARAT
Color Grade G
Clarity Grade SI 2
Polish EXCELLENT
Symmetry EXCELLENT
Fluorescence NONE
Inscription(s) LABGROWN IGI
LG530225542

Comments: This Laboratory Grown Diamond was created by Chemical Vapor Deposition (CVD) growth process and may include post-growth treatment. Type Ila



THIS DOCUMENT WAS PRODUCED WITH THE FOLLOWING SECURITY MEASURES: SPECIAL DOCUMENT PAPER, INK SCREENS, WATERMARK, BACKGROUND DESIGN, HOLOGRAM AND OTHER SECURITY FEATURES NOT LISTED AND DO EXCEED DOCUMENT SECURITY INDUSTRY GUIDELINES.

For terms & conditions and to verify this report, please visit www.igi.org

Comments: This Laboratory Grown Diamond was created by Chemical Vapor Deposition (CVD) growth process and may include post-growth treatment. Type Ila