



INTERNATIONAL GEMOLOGICAL INSTITUTE

ELECTRONIC COPY

LABORATORY GROWN DIAMOND REPORT

LG530228983

LABORATORY GROWN DIAMOND REPORT

IGI LABORATORY GROWN DIAMOND IDENTIFICATION REPORT

August 23, 2022

IGI Report Number LG530228983

Description LABORATORY GROWN DIAMOND
Shape and Cutting Style CUT CORNERED RECTANGULAR MODIFIED
BRILLIANT

Measurements 5.55 X 4.05 X 2.65 MM

GRADING RESULTS

Carat Weight 0.48 CARAT

Color Grade G

Clarity Grade VVS 2

ADDITIONAL GRADING INFORMATION

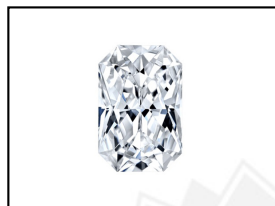
Polish VERY GOOD

Symmetry EXCELLENT

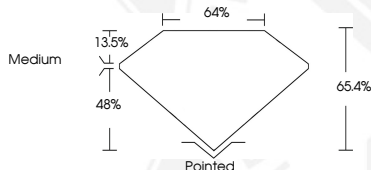
Fluorescence NONE

Inscription(s) LABGROWN IGI LG530228983

Comments: This Laboratory Grown Diamond was created by
Chemical Vapor Deposition (CVD) growth process and may include
post-growth treatment.
Type IIa



LASERSCRIBESM
Sample Images Used



IGI LABORATORY GROWN DIAMOND ID REPORT

August 23, 2022

IGI Report Number LG530228983

CUT CORNERED RECTANGULAR
MODIFIED BRILLIANT

5.55 X 4.05 X 2.65 MM

Carat Weight 0.48 CARAT
Color Grade G
Clarity Grade VVS 2
Polish VERY GOOD
Symmetry EXCELLENT
Fluorescence NONE
Inscription(s) LABGROWN IGI
LG530228983

Comments: This Laboratory Grown
Diamond was created by
Chemical Vapor Deposition (CVD)
growth process and may include
post-growth treatment.
Type IIa

IGI LABORATORY GROWN DIAMOND ID REPORT

August 23, 2022

IGI Report Number LG530228983

CUT CORNERED RECTANGULAR
MODIFIED BRILLIANT

5.55 X 4.05 X 2.65 MM

Carat Weight 0.48 CARAT
Color Grade G
Clarity Grade VVS 2
Polish VERY GOOD
Symmetry EXCELLENT
Fluorescence NONE
Inscription(s) LABGROWN IGI
LG530228983

Comments: This Laboratory Grown
Diamond was created by
Chemical Vapor Deposition (CVD)
growth process and may include
post-growth treatment.
Type IIa



THIS DOCUMENT WAS PRODUCED WITH THE FOLLOWING SECURITY MEASURES: SPECIAL DOCUMENT PAPER, INK SCREENS, WATERMARK,
BACKGROUND DESIGN, HOLOGRAM AND OTHER SECURITY FEATURES NOT LISTED AND DO EXCEED DOCUMENT SECURITY INDUSTRY GUIDELINES.

For terms & conditions and to verify this report, please visit www.igi.org