



ELECTRONIC COPY

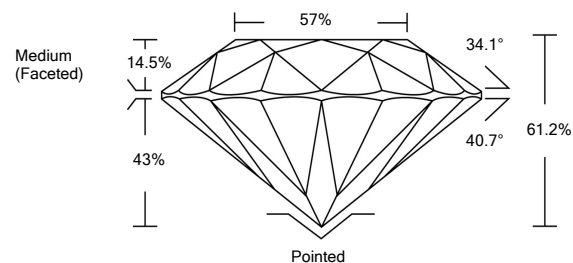
LG530292439

LABORATORY GROWN DIAMOND REPORT

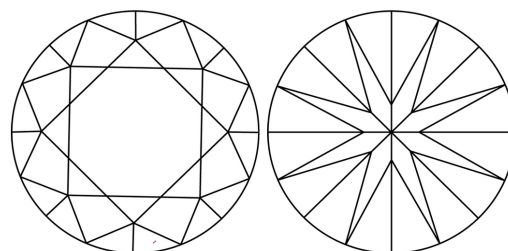
GRADING SCALES

COLOR GRADING SCALE	CL	NC	FT	VLT	LT
	COLORLESS D-F	NEAR COLORLESS G-J	FAINT K-M	VERY LIGHT N-R	LIGHT S-Z
CLARITY (10x) GRADING SCALE	FL	VVS	VS	SI	I
	FLAWLESS INTERNALLY FLAWLESS	VERY VERY SLIGHTLY INCLUDED	VERY SLIGHTLY INCLUDED	SLIGHTLY INCLUDED	INCLUDED

PROPORTIONS

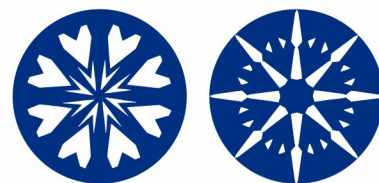


CLARITY CHARACTERISTICS



KEY TO SYMBOLS

Red symbols indicate internal characteristics. Green symbols indicate external characteristics.



www.igi.org

May 21, 2022

IGI Report Number **LG530292439**

Description **LABORATORY GROWN DIAMOND**

Shape and Cutting Style **ROUND BRILLIANT**

Measurements **8.43 - 8.47 X 5.18 MM**

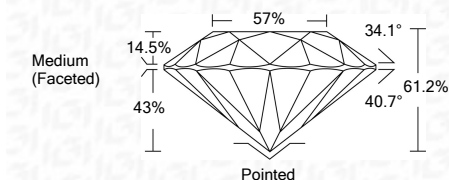
GRADING RESULTS

Carat Weight **2.27 CARATS**

Color Grade **D**

Clarity Grade **VVS 2**

Cut Grade **IDEAL**



ADDITIONAL GRADING INFORMATION

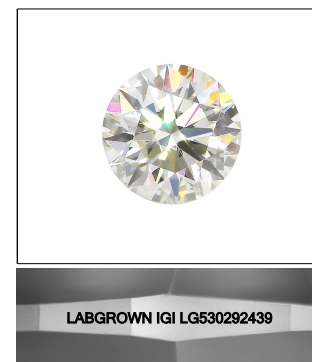
Polish **EXCELLENT**

Symmetry **EXCELLENT**

Fluorescence **NONE**

Inscription(s) **LABGROWN IGI LG530292439**

Comments: HEARTS & ARROWS
As Grown - No indication of post-growth treatment.
This Laboratory Grown Diamond was created by High Pressure High Temperature (HPHT) growth process.
Type II



LASERSCRIBESM

Sample Image Used



© IGI 2020, International Gemological Institute

FD - 10 20



IGI

May 21, 2022
IGI Report No. LG530292439

ROUND BRILLIANT

8.43 - 8.47 X 5.18 MM

2.27 CARATS

D

VVS 2

IDEAL

61.2%

57%

Medium (Faceted)

Pointed

EXCELLENT

EXCELLENT

NONE

LABGROWN IGI

LG530292439

HEARTS & ARROWS

As Grown - No indication of post-growth treatment.

This Laboratory Grown Diamond was created by High Pressure High Temperature (HPHT) growth process.

Type II