

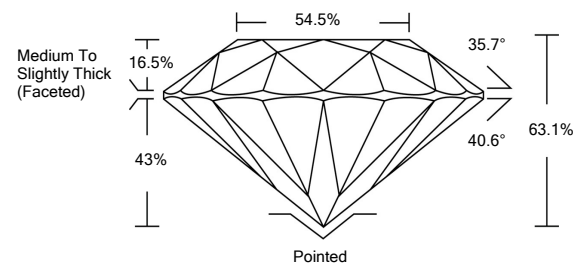


ELECTRONIC COPY

LABORATORY GROWN DIAMOND REPORT

LG530292564

PROPORTIONS



GRADING SCALES

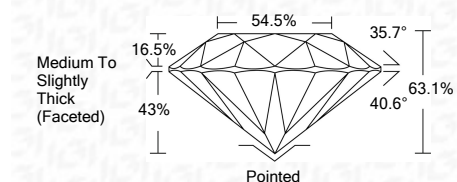
COLOR GRADING SCALE	CL	NC	FT	VL	LT	
	COLORLESS D-F	NEAR COLORLESS G-J	FAINT K-M	VERY LIGHT N-R	LIGHT S-Z	
CLARITY (10x) GRADING SCALE	FL	IF	VVS	VS	SI	I
	FLAWLESS INTERNALLY FLAWLESS	VERY VERY SLIGHTLY INCLUDED	VERY SLIGHTLY INCLUDED	SLIGHTLY INCLUDED	INCLUDED	

May 23, 2022
 IGI Report Number **LG530292564**
 Description **LABORATORY GROWN DIAMOND**
 Shape and Cutting Style **ROUND BRILLIANT**
 Measurements **7.59 - 7.65 X 4.81 MM**

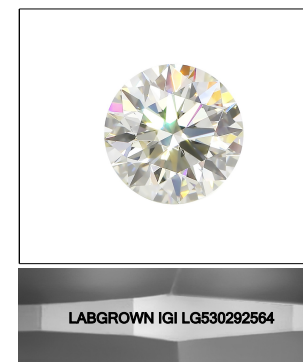
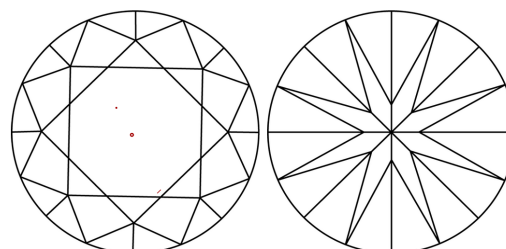
May 23, 2022
 IGI Report Number **LG530292564**
 Description **LABORATORY GROWN DIAMOND**
 Shape and Cutting Style **ROUND BRILLIANT**
 Measurements **7.59 - 7.65 X 4.81 MM**
GRADING RESULTS
 Carat Weight **1.72 CARAT**
 Color Grade **F**
 Clarity Grade **VS 2**
 Cut Grade **EXCELLENT**

GRADING RESULTS

Carat Weight **1.72 CARAT**
 Color Grade **F**
 Clarity Grade **VS 2**
 Cut Grade **EXCELLENT**



CLARITY CHARACTERISTICS



LASERSCRIBESM
 Sample Image Used

KEY TO SYMBOLS

Red symbols indicate internal characteristics.
 Green symbols indicate external characteristics.

ADDITIONAL GRADING INFORMATION

Polish **EXCELLENT**
 Symmetry **EXCELLENT**
 Fluorescence **NONE**
 Inscription(s) **LABGROWN IGI LG530292564**

ADDITIONAL GRADING INFORMATION
 Polish **EXCELLENT**
 Symmetry **EXCELLENT**
 Fluorescence **NONE**
 Inscription(s) **LABGROWN IGI LG530292564**
 Comments: This Laboratory Grown Diamond was created by Chemical Vapor Deposition (CVD) growth process and may include post-growth treatment.
 Type IIa



IGI

May 23, 2022
 IGI Report No. **LG530292564**
ROUND BRILLIANT
 Measurements **7.59 - 7.65 X 4.81 MM**
 Carat Weight **1.72 CARAT**
 Color Grade **F**
 Clarity Grade **VS 2**
 Depth **EXCELLENT**
 Table **63.1%**
 Girdle **54.5%**
 Medium To Slightly Thick (Faceted)
 Cut **Pointed**
 Polish **EXCELLENT**
 Symmetry **EXCELLENT**
 Fluorescence **NONE**
 Inscription(s) **LABGROWN IGI LG530292564**
 Comments: This Laboratory Grown Diamond was created by Chemical Vapor Deposition (CVD) growth process and may include post-growth treatment.
 Type IIa