



**ELECTRONIC COPY**

**LABORATORY GROWN DIAMOND REPORT**

May 21, 2022  
 IGI Report Number **LG530292824**  
 Description **LABORATORY GROWN  
DIAMOND**  
 Shape and Cutting Style **CUSHION MODIFIED  
BRILLIANT**  
 Measurements **6.72 X 6.71 X 4.37 MM**

**GRADING RESULTS**

Carat Weight **1.52 CARAT**  
 Color Grade **D**  
 Clarity Grade **VS 1**

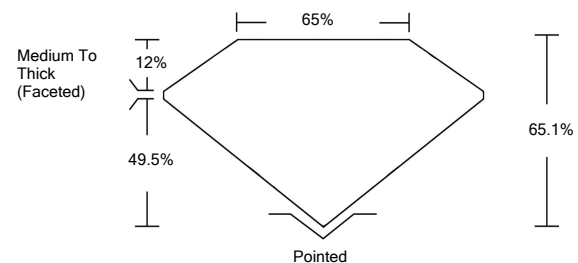
**ADDITIONAL GRADING INFORMATION**

Polish **EXCELLENT**  
 Symmetry **EXCELLENT**  
 Fluorescence **NONE**  
 Inscription(s) **LABGROWN IGI LG530292824**

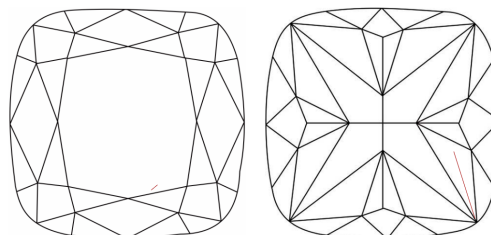
Comments: As Grown - No indication of post-growth treatment.  
 This Laboratory Grown Diamond was created by High Pressure High Temperature (HPHT) growth process.  
 Type II

LG530292824

**PROPORTIONS**



**CLARITY CHARACTERISTICS**

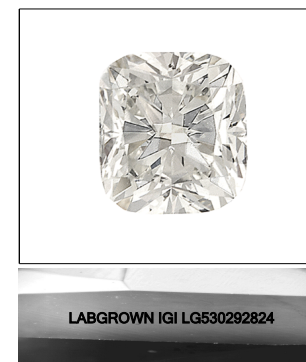


**KEY TO SYMBOLS**

Red symbols indicate internal characteristics.  
 Green symbols indicate external characteristics.

**GRADING SCALES**

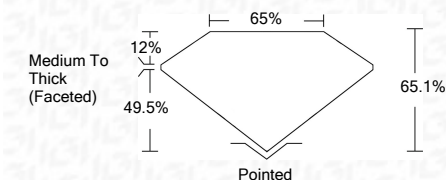
|                             |                              |                             |                        |                   |           |          |
|-----------------------------|------------------------------|-----------------------------|------------------------|-------------------|-----------|----------|
| COLOR GRADING SCALE         | CL                           | NC                          | FT                     | VLT               | LT        |          |
|                             | COLORLESS D-F                | NEAR COLORLESS G-J          | FAINT K-M              | VERY LIGHT N-R    | LIGHT S-Z |          |
| CLARITY (10x) GRADING SCALE | FL                           | IF                          | VVS                    | VS                | SI        | I        |
|                             | FLAWLESS INTERNALLY FLAWLESS | VERY VERY SLIGHTLY INCLUDED | VERY SLIGHTLY INCLUDED | SLIGHTLY INCLUDED | INCLUDED  | INCLUDED |



LASERSCRIBE<sup>SM</sup>

Sample Image Used

May 21, 2022  
 IGI Report Number **LG530292824**  
 Description **LABORATORY GROWN  
DIAMOND**  
 Shape and Cutting Style **CUSHION MODIFIED  
BRILLIANT**  
 Measurements **6.72 X 6.71 X 4.37 MM**  
**GRADING RESULTS**  
 Carat Weight **1.52 CARAT**  
 Color Grade **D**  
 Clarity Grade **VS 1**



**ADDITIONAL GRADING INFORMATION**

Polish **EXCELLENT**  
 Symmetry **EXCELLENT**  
 Fluorescence **NONE**  
 Inscription(s) **LABGROWN IGI LG530292824**

Comments: As Grown - No indication of post-growth treatment.  
 This Laboratory Grown Diamond was created by High Pressure High Temperature (HPHT) growth process.  
 Type II



**IGI**



May 21, 2022  
 IGI Report No. LG530292824  
**CUSHION MODIFIED BRILLIANT**  
 6.72 X 6.71 X 4.37 MM  
 Carat Weight 1.52 CARAT  
 Color Grade D  
 Clarity Grade VS 1  
 Depth 65.1%  
 Table 65%  
 Girdle Medium To Thick (Faceted)  
 Culet Pointed  
 Polish EXCELLENT  
 Symmetry EXCELLENT  
 Fluorescence NONE  
 Inscription(s) LABGROWN IGI LG530292824  
 Comments: As Grown - No indication of post-growth treatment.  
 This Laboratory Grown Diamond was created by High Pressure High Temperature (HPHT) growth process.  
 Type II