

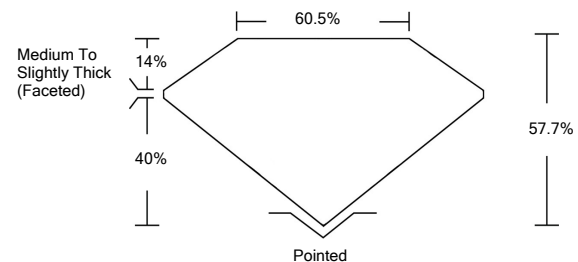


ELECTRONIC COPY

LABORATORY GROWN DIAMOND REPORT

LG530295372

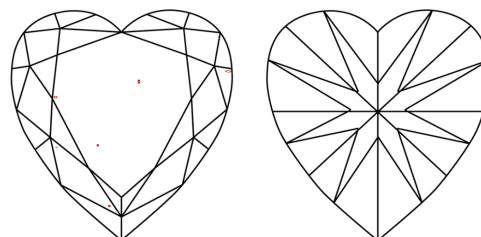
PROPORTIONS



GRADING SCALES

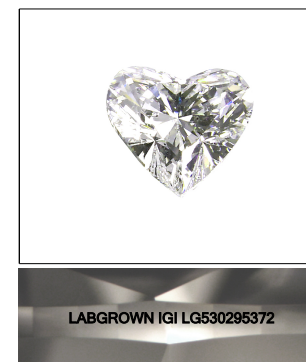
COLOR GRADING SCALE	CL	NC	FT	VLT	LT	
	COLORLESS D-F	NEAR COLORLESS G-J	FAINT K-M	VERY LIGHT N-R	LIGHT S-Z	
CLARITY (10x) GRADING SCALE	FL	IF	VVS	VS	SI	I
	FLAWLESS INTERNALLY FLAWLESS	VERY VERY SLIGHTLY INCLUDED	VERY SLIGHTLY INCLUDED	SLIGHTLY INCLUDED	INCLUDED	

CLARITY CHARACTERISTICS



KEY TO SYMBOLS

Red symbols indicate internal characteristics.
Green symbols indicate external characteristics.



LABGROWN IGI LG530295372

LASERSCRIBESM

Sample Image Used

May 26, 2022

IGI Report Number

LG530295372

Description

LABORATORY GROWN
DIAMOND

Shape and Cutting Style

HEART BRILLIANT

Measurements

7.63 X 9.05 X 5.22 MM

GRADING RESULTS

Carat Weight

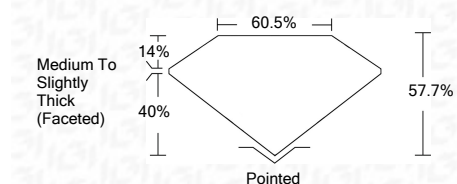
2.08 CARATS

Color Grade

G

Clarity Grade

VS 2



ADDITIONAL GRADING INFORMATION

Polish

EXCELLENT

Symmetry

EXCELLENT

Fluorescence

NONE

Inscription(s)

LABGROWN IGI LG530295372

Comments: This Laboratory Grown Diamond was created by Chemical Vapor Deposition (CVD) growth process and may include post-growth treatment.
Type IIa

May 26, 2022

IGI Report Number

LG530295372

Description

LABORATORY GROWN
DIAMOND

Shape and Cutting Style

HEART BRILLIANT

Measurements

7.63 X 9.05 X 5.22 MM

GRADING RESULTS

Carat Weight

2.08 CARATS

Color Grade

G

Clarity Grade

VS 2

ADDITIONAL GRADING INFORMATION

Polish

EXCELLENT

Symmetry

EXCELLENT

Fluorescence

NONE

Inscription(s)

LABGROWN IGI LG530295372

Comments: This Laboratory Grown Diamond was created by Chemical Vapor Deposition (CVD) growth process and may include post-growth treatment.
Type IIa



IGI

May 26, 2022	IGI Report No. LG530295372	HEART BRILLIANT	7.63 X 9.05 X 5.22 MM	2.08 CARATS	G	VS 2	57.7%	60.5%	Medium To Slightly Thick (Faceted)	Pointed	EXCELLENT	EXCELLENT	NONE	LABGROWN IGI LG530295372

This Laboratory Grown Diamond was created by Chemical Vapor Deposition (CVD) growth process and may include post-growth treatment.
Type IIa