



**INTERNATIONAL
GEMOLOGICAL
INSTITUTE**

LABORATORY GROWN DIAMOND REPORT

IGI LABORATORY GROWN DIAMOND IDENTIFICATION REPORT

May 27, 2022
 IGI Report Number LG530295920
 Description LABORATORY GROWN DIAMOND
 Shape and Cutting Style PEAR BRILLIANT
 Measurements 6.99 X 4.17 X 2.42 MM

GRADING RESULTS

Carat Weight 0.41 CARAT
 Color Grade H
 Clarity Grade SI 1

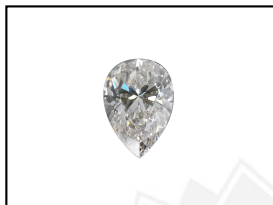
ADDITIONAL GRADING INFORMATION

Polish EXCELLENT
 Symmetry EXCELLENT
 Fluorescence NONE
 Inscription(s) LABGROWN IGI LG530295920

Comments: This Laboratory Grown Diamond was created by Chemical Vapor Deposition (CVD) growth process and may include post-growth treatment. Type IIa

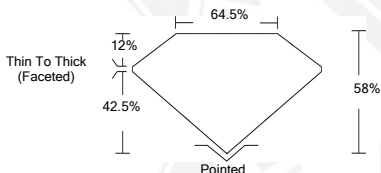
**ELECTRONIC COPY LABORATORY GROWN
DIAMOND REPORT**

LG530295920



LABGROWN IGI LG530295920

LASERSCRIBESM
Sample Images Used



**IGI LABORATORY GROWN
DIAMOND ID REPORT**

May 27, 2022
 IGI Report Number **LG530295920**
PEAR BRILLIANT
6.99 X 4.17 X 2.42 MM
 Carat Weight 0.41 CARAT
 Color Grade H
 Clarity Grade SI 1
 Polish EXCELLENT
 Symmetry EXCELLENT
 Fluorescence NONE
 Inscription(s) LABGROWN IGI
 LG530295920

Comments: This Laboratory Grown Diamond was created by Chemical Vapor Deposition (CVD) growth process and may include post-growth treatment. Type IIa

**IGI LABORATORY GROWN
DIAMOND ID REPORT**

May 27, 2022
 IGI Report Number **LG530295920**
PEAR BRILLIANT
6.99 X 4.17 X 2.42 MM
 Carat Weight 0.41 CARAT
 Color Grade H
 Clarity Grade SI 1
 Polish EXCELLENT
 Symmetry EXCELLENT
 Fluorescence NONE
 Inscription(s) LABGROWN IGI
 LG530295920

Comments: This Laboratory Grown Diamond was created by Chemical Vapor Deposition (CVD) growth process and may include post-growth treatment. Type IIa

THIS DOCUMENT WAS PRODUCED WITH THE FOLLOWING SECURITY MEASURES: SPECIAL DOCUMENT PAPER, INK SCREENS, WATERMARK, BACKGROUND DESIGN, HOLOGRAM AND OTHER SECURITY FEATURES NOT LISTED AND DO EXCEED DOCUMENT SECURITY INDUSTRY GUIDELINES.

For terms & conditions and to verify this report, please visit www.igi.org