



**INTERNATIONAL  
GEMOLOGICAL  
INSTITUTE**

**LABORATORY GROWN DIAMOND REPORT**

**IGI LABORATORY GROWN DIAMOND IDENTIFICATION REPORT**

May 26, 2022  
 IGI Report Number LG530296159  
 Description LABORATORY GROWN DIAMOND  
 Shape and Cutting Style CUT CORNERED RECTANGULAR  
 MODIFIED BRILLIANT  
 Measurements 5.15 X 3.62 X 2.48 MM

**GRADING RESULTS**

Carat Weight 0.42 CARAT  
 Color Grade G  
 Clarity Grade VS 1

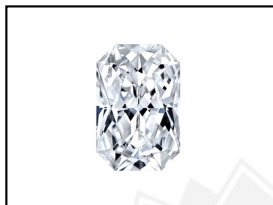
**ADDITIONAL GRADING INFORMATION**

Polish VERY GOOD  
 Symmetry VERY GOOD  
 Fluorescence NONE  
 Inscription(s) LABGROWN IGI LG530296159

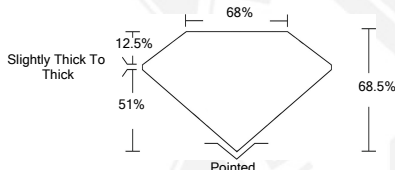
Comments: This Laboratory Grown Diamond was created by Chemical Vapor Deposition (CVD) growth process and may include post-growth treatment.  
 Type IIa

**ELECTRONIC COPY LABORATORY GROWN  
DIAMOND REPORT**

**LG530296159**



**LASERSCRIBE<sup>SM</sup>**  
Sample Images Used



**IGI LABORATORY GROWN  
DIAMOND ID REPORT**

May 26, 2022  
 IGI Report Number **LG530296159**  
**CUT CORNERED  
RECTANGULAR MODIFIED  
BRILLIANT**  
**5.15 X 3.62 X 2.48 MM**  
 Carat Weight 0.42 CARAT  
 Color Grade G  
 Clarity Grade VS 1  
 Polish VERY GOOD  
 Symmetry VERY GOOD  
 Fluorescence NONE  
 Inscription(s) LABGROWN IGI  
 LG530296159

Comments: This Laboratory Grown Diamond was created by Chemical Vapor Deposition (CVD) growth process and may include post-growth treatment.  
 Type IIa

**IGI LABORATORY GROWN  
DIAMOND ID REPORT**

May 26, 2022  
 IGI Report Number **LG530296159**  
**CUT CORNERED  
RECTANGULAR MODIFIED  
BRILLIANT**  
**5.15 X 3.62 X 2.48 MM**  
 Carat Weight 0.42 CARAT  
 Color Grade G  
 Clarity Grade VS 1  
 Polish VERY GOOD  
 Symmetry VERY GOOD  
 Fluorescence NONE  
 Inscription(s) LABGROWN IGI  
 LG530296159

Comments: This Laboratory Grown Diamond was created by Chemical Vapor Deposition (CVD) growth process and may include post-growth treatment.  
 Type IIa

THIS DOCUMENT WAS PRODUCED WITH THE FOLLOWING SECURITY MEASURES: SPECIAL DOCUMENT PAPER, INK SCREENS, WATERMARK, BACKGROUND DESIGN, HOLOGRAM AND OTHER SECURITY FEATURES NOT LISTED AND DO EXCEED DOCUMENT SECURITY INDUSTRY GUIDELINES.

For terms & conditions and to verify this report, please visit [www.igi.org](http://www.igi.org)