



ELECTRONIC COPY

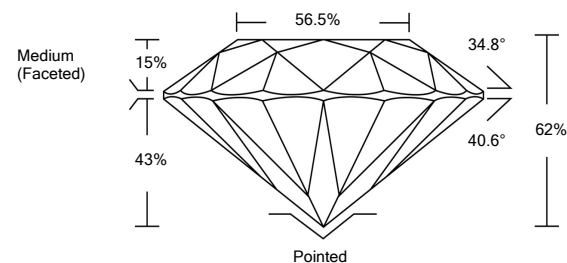
LABORATORY GROWN DIAMOND REPORT

LG530296868

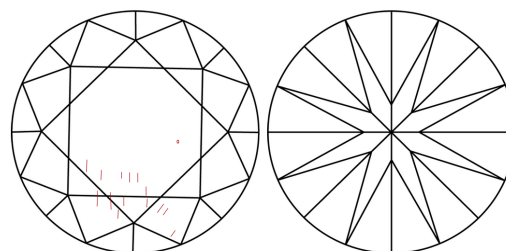
GRADING SCALES

COLOR GRADING SCALE	CL	NC	FT	VLT	LT	
	COLORLESS D-F	NEAR COLORLESS G-J	FAINT K-M	VERY LIGHT N-R	LIGHT S-Z	
CLARITY (10x) GRADING SCALE	FL	IF	VVS	VS	SI	I
	FLAWLESS INTERNALLY FLAWLESS	VERY VERY SLIGHTLY INCLUDED	VERY SLIGHTLY INCLUDED	SLIGHTLY INCLUDED	INCLUDED	

PROPORTIONS

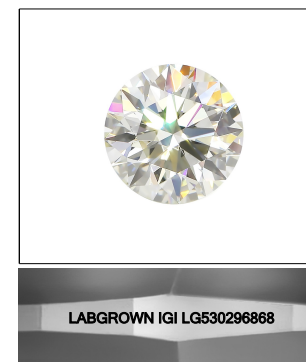


CLARITY CHARACTERISTICS



KEY TO SYMBOLS

Red symbols indicate internal characteristics.
Green symbols indicate external characteristics.



LASERSCRIBESM

Sample Image Used

May 28, 2022

IGI Report Number

LG530296868

Description

**LABORATORY GROWN
DIAMOND**

Shape and Cutting Style

ROUND BRILLIANT

Measurements

6.62 - 6.67 X 4.12 MM

GRADING RESULTS

Carat Weight

1.12 CARAT

Color Grade

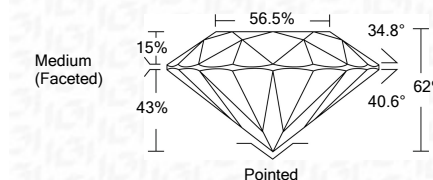
D

Clarity Grade

VS 2

Cut Grade

IDEAL



ADDITIONAL GRADING INFORMATION

Polish

EXCELLENT

Symmetry

EXCELLENT

Fluorescence

NONE

Inscription(s)

LABGROWN IGI LG530296868

Comments: As Grown - No indication of post-growth treatment.
This Laboratory Grown Diamond was created by High Pressure High Temperature (HPHT) growth process. Type II

May 28, 2022

IGI Report Number

LG530296868

Description

**LABORATORY GROWN
DIAMOND**

Shape and Cutting Style

ROUND BRILLIANT

Measurements

6.62 - 6.67 X 4.12 MM

GRADING RESULTS

Carat Weight

1.12 CARAT

Color Grade

D

Clarity Grade

VS 2

Cut Grade

IDEAL

ADDITIONAL GRADING INFORMATION

Polish

EXCELLENT

Symmetry

EXCELLENT

Fluorescence

NONE

Inscription(s)

LABGROWN IGI LG530296868

Comments: As Grown - No indication of post-growth treatment.
This Laboratory Grown Diamond was created by High Pressure High Temperature (HPHT) growth process. Type II



IGI



May 28, 2022	IGI Report No. LG530296868	1.12 CARAT	D	Pointed	EXCELLENT	EXCELLENT	NONE	LABGROWN IGI LG530296868	As Grown - No indication of post-growth treatment. This Laboratory Grown Diamond was created by High Pressure High Temperature (HPHT) growth process. Type II
ROUND BRILLIANT	6.62 - 6.67 X 4.12 MM	Color Grade	VS 2	Cut Grade	IDEAL	62%	56.5%	Medium (Faceted)	
Carat Weight		Clarity Grade	IDEAL	Polish	EXCELLENT	Symmetry	EXCELLENT	Fluorescence	
		Cut Grade	EXCELLENT	Inscription(s)	LABGROWN IGI LG530296868				