

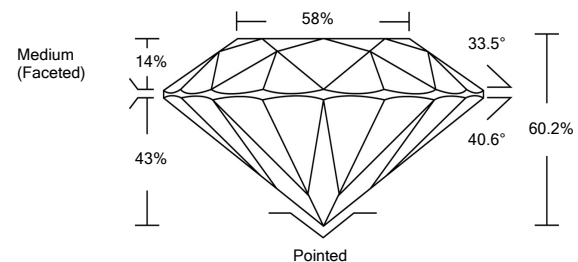


**ELECTRONIC COPY**

**LABORATORY GROWN DIAMOND REPORT**

LG530299181

**PROPORTIONS**



**GRADING SCALES**

| COLOR GRADING SCALE         | CL                           | NC                          | FT                     | VL                | LT        |   |
|-----------------------------|------------------------------|-----------------------------|------------------------|-------------------|-----------|---|
|                             | COLORLESS D-F                | NEAR COLORLESS G-J          | FAINT K-M              | VERY LIGHT N-R    | LIGHT S-Z |   |
| CLARITY (10x) GRADING SCALE | FL                           | IF                          | VVS                    | VS                | SI        | I |
|                             | FLAWLESS INTERNALLY FLAWLESS | VERY VERY SLIGHTLY INCLUDED | VERY SLIGHTLY INCLUDED | SLIGHTLY INCLUDED | INCLUDED  |   |

May 25, 2022  
 IGI Report Number **LG530299181**  
 Description **LABORATORY GROWN DIAMOND**  
 Shape and Cutting Style **ROUND BRILLIANT**  
 Measurements **7.01 - 7.07 X 4.24 MM**

**GRADING RESULTS**

Carat Weight **1.29 CARAT**  
 Color Grade **G**  
 Clarity Grade **SI 1**  
 Cut Grade **IDEAL**

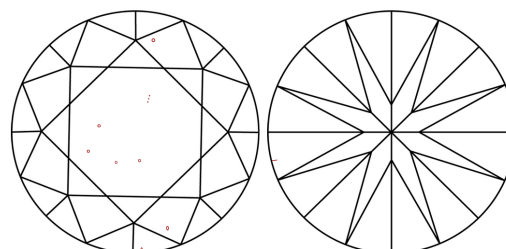
**ADDITIONAL GRADING INFORMATION**

Polish **EXCELLENT**  
 Symmetry **EXCELLENT**  
 Fluorescence **NONE**

Inscription(s) **LABGROWN IGI LG530299181**

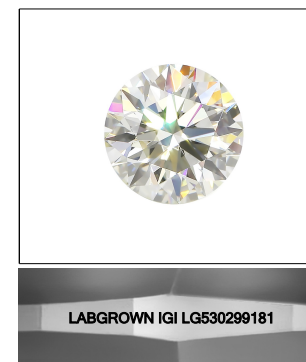
Comments: This Laboratory Grown Diamond was created by Chemical Vapor Deposition (CVD) growth process and may include post-growth treatment.  
 Type IIa

**CLARITY CHARACTERISTICS**



**KEY TO SYMBOLS**

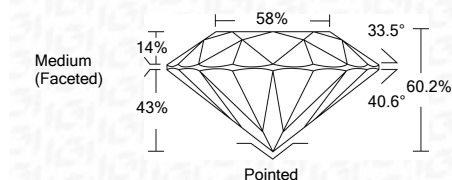
Red symbols indicate internal characteristics.  
 Green symbols indicate external characteristics.



**LASERSCRIBE<sup>SM</sup>**

Sample Image Used

May 25, 2022  
 IGI Report Number **LG530299181**  
 Description **LABORATORY GROWN DIAMOND**  
 Shape and Cutting Style **ROUND BRILLIANT**  
 Measurements **7.01 - 7.07 X 4.24 MM**  
**GRADING RESULTS**  
 Carat Weight **1.29 CARAT**  
 Color Grade **G**  
 Clarity Grade **SI 1**  
 Cut Grade **IDEAL**



**ADDITIONAL GRADING INFORMATION**

Polish **EXCELLENT**  
 Symmetry **EXCELLENT**  
 Fluorescence **NONE**

Inscription(s) **LABGROWN IGI LG530299181**

Comments: This Laboratory Grown Diamond was created by Chemical Vapor Deposition (CVD) growth process and may include post-growth treatment.  
 Type IIa



|              |                            |                       |   |      |       |       |     |                  |         |           |           |      |                          |
|--------------|----------------------------|-----------------------|---|------|-------|-------|-----|------------------|---------|-----------|-----------|------|--------------------------|
| May 25, 2022 | IGI Report No. LG530299181 | 1.29 CARAT            | G | SI 1 | IDEAL | 60.2% | 58% | Medium (Faceted) | Pointed | EXCELLENT | EXCELLENT | NONE | LABGROWN IGI LG530299181 |
|              | ROUND BRILLIANT            | 7.01 - 7.07 X 4.24 MM |   |      |       |       |     |                  |         |           |           |      |                          |
|              | Carat Weight               |                       |   |      |       |       |     |                  |         |           |           |      |                          |
|              | Color Grade                |                       |   |      |       |       |     |                  |         |           |           |      |                          |
|              | Clarity Grade              |                       |   |      |       |       |     |                  |         |           |           |      |                          |
|              | Cut Grade                  |                       |   |      |       |       |     |                  |         |           |           |      |                          |
|              | Depth                      |                       |   |      |       |       |     |                  |         |           |           |      |                          |
|              | Table                      |                       |   |      |       |       |     |                  |         |           |           |      |                          |
|              | Girdle                     |                       |   |      |       |       |     |                  |         |           |           |      |                          |
|              | Culet                      |                       |   |      |       |       |     |                  |         |           |           |      |                          |
|              | Polish                     |                       |   |      |       |       |     |                  |         |           |           |      |                          |
|              | Symmetry                   |                       |   |      |       |       |     |                  |         |           |           |      |                          |
|              | Fluorescence               |                       |   |      |       |       |     |                  |         |           |           |      |                          |
|              | Inscription(s)             |                       |   |      |       |       |     |                  |         |           |           |      |                          |
|              | Comments:                  |                       |   |      |       |       |     |                  |         |           |           |      |                          |

This Laboratory Grown Diamond was created by Chemical Vapor Deposition (CVD) growth process and may include post-growth treatment.  
 Type IIa