



# INTERNATIONAL GEMOLOGICAL INSTITUTE

## LABORATORY GROWN DIAMOND REPORT

### IGI LABORATORY GROWN DIAMOND IDENTIFICATION REPORT

June 1, 2022  
IGI Report Number LG532236322  
Description LABORATORY GROWN DIAMOND  
Shape and Cutting Style PEAR BRILLIANT  
Measurements 7.68 X 4.52 X 2.60 MM

### GRADING RESULTS

Carat Weight 0.51 CARAT  
Color Grade F  
Clarity Grade VVS 2

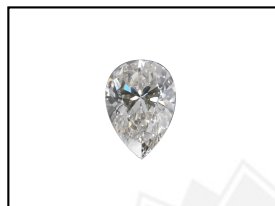
### ADDITIONAL GRADING INFORMATION

Polish VERY GOOD  
Symmetry EXCELLENT  
Fluorescence NONE  
Inscription(s) LABGROWN IGI LG532236322

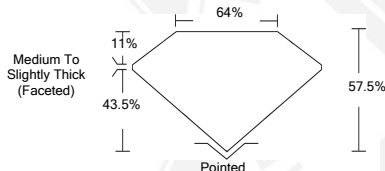
Comments: This Laboratory Grown Diamond was created by Chemical Vapor Deposition (CVD) growth process and may include post-growth treatment.  
Type IIa

## ELECTRONIC COPY LABORATORY GROWN DIAMOND REPORT

LG532236322



**LASERSCRIBE<sup>SM</sup>**  
Sample Images Used



### IGI LABORATORY GROWN DIAMOND ID REPORT

June 1, 2022  
IGI Report Number LG532236322  
**PEAR BRILLIANT**  
**7.68 X 4.52 X 2.60 MM**  
Carat Weight 0.51 CARAT  
Color Grade F  
Clarity Grade VVS 2  
Polish VERY GOOD  
Symmetry EXCELLENT  
Fluorescence NONE  
Inscription(s) LABGROWN IGI LG532236322

Comments: This Laboratory Grown Diamond was created by Chemical Vapor Deposition (CVD) growth process and may include post-growth treatment.  
Type IIa

### IGI LABORATORY GROWN DIAMOND ID REPORT

June 1, 2022  
IGI Report Number LG532236322  
**PEAR BRILLIANT**  
**7.68 X 4.52 X 2.60 MM**  
Carat Weight 0.51 CARAT  
Color Grade F  
Clarity Grade VVS 2  
Polish VERY GOOD  
Symmetry EXCELLENT  
Fluorescence NONE  
Inscription(s) LABGROWN IGI LG532236322

Comments: This Laboratory Grown Diamond was created by Chemical Vapor Deposition (CVD) growth process and may include post-growth treatment.  
Type IIa



THIS DOCUMENT WAS PRODUCED WITH THE FOLLOWING SECURITY MEASURES: SPECIAL DOCUMENT PAPER, INK SCREENS, WATERMARK, BACKGROUND DESIGN, HOLOGRAM AND OTHER SECURITY FEATURES NOT LISTED AND DO EXCEED DOCUMENT SECURITY INDUSTRY GUIDELINES.

For terms & conditions and to verify this report, please visit [www.igi.org](http://www.igi.org)