

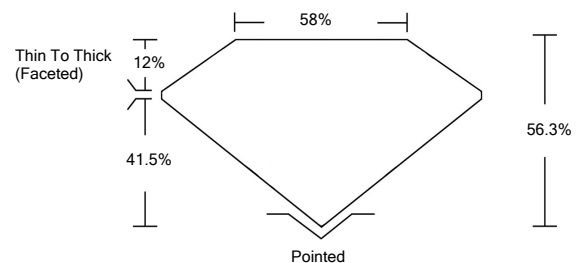


**ELECTRONIC COPY**

**LABORATORY GROWN DIAMOND REPORT**

LG532236450

**PROPORTIONS**



**GRADING SCALES**

|                             |                              |                             |                        |                   |           |   |
|-----------------------------|------------------------------|-----------------------------|------------------------|-------------------|-----------|---|
| COLOR GRADING SCALE         | CL                           | NC                          | FT                     | VL                | LT        |   |
|                             | COLORLESS D-F                | NEAR COLORLESS G-J          | FAINT K-M              | VERY LIGHT N-R    | LIGHT S-Z |   |
| CLARITY (10x) GRADING SCALE | FL                           | IF                          | VVS                    | VS                | SI        | I |
|                             | FLAWLESS INTERNALLY FLAWLESS | VERY VERY SLIGHTLY INCLUDED | VERY SLIGHTLY INCLUDED | SLIGHTLY INCLUDED | INCLUDED  |   |

June 1, 2022

IGI Report Number

**LG532236450**

Description

**LABORATORY GROWN  
DIAMOND**

Shape and Cutting Style

**HEART BRILLIANT**

Measurements

**7.98 X 8.84 X 4.98 MM**

**GRADING RESULTS**

Carat Weight

**2.00 CARATS**

Color Grade

**G**

Clarity Grade

**VS 1**

June 1, 2022

IGI Report Number

**LG532236450**

Description

**LABORATORY GROWN  
DIAMOND**

Shape and Cutting Style

**HEART BRILLIANT**

Measurements

**7.98 X 8.84 X 4.98 MM**

**GRADING RESULTS**

Carat Weight

**2.00 CARATS**

Color Grade

**G**

Clarity Grade

**VS 1**

**ADDITIONAL GRADING INFORMATION**

Polish

**EXCELLENT**

Symmetry

**EXCELLENT**

Fluorescence

**NONE**

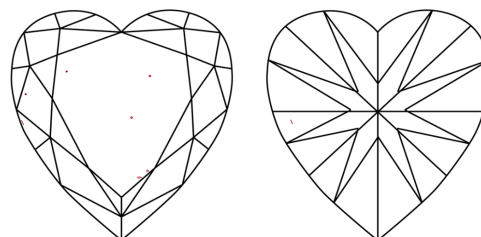
Inscription(s)

**LABGROWN IGI LG532236450**

Comments: This Laboratory Grown Diamond was created by Chemical Vapor Deposition (CVD) growth process and may include post-growth treatment.

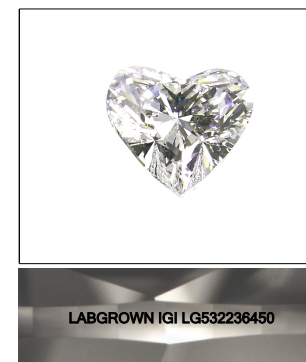
Type IIa

**CLARITY CHARACTERISTICS**



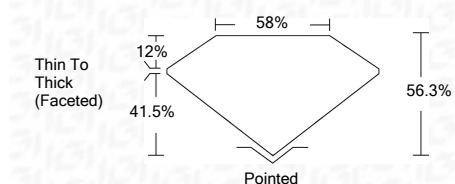
**KEY TO SYMBOLS**

Red symbols indicate internal characteristics.  
Green symbols indicate external characteristics.



**LASERSCRIBE<sup>SM</sup>**

Sample Image Used



**ADDITIONAL GRADING INFORMATION**

Polish

**EXCELLENT**

Symmetry

**EXCELLENT**

Fluorescence

**NONE**

Inscription(s)

**LABGROWN IGI LG532236450**

Comments: This Laboratory Grown Diamond was created by Chemical Vapor Deposition (CVD) growth process and may include post-growth treatment.

Type IIa



**IGI**

|              |                            |                 |                       |             |   |      |       |     |                         |           |           |      |                          |   |
|--------------|----------------------------|-----------------|-----------------------|-------------|---|------|-------|-----|-------------------------|-----------|-----------|------|--------------------------|---|
| June 1, 2022 | IGI Report No. LG532236450 | HEART BRILLIANT | 7.98 X 8.84 X 4.98 MM | 2.00 CARATS | G | VS 1 | 56.3% | 58% | Pointed                 | EXCELLENT | EXCELLENT | NONE | LABGROWN IGI LG532236450 | Comments: This Laboratory Grown Diamond was created by Chemical Vapor Deposition (CVD) growth process and may include post-growth treatment. Type IIa |
|              |                            |                 |                       |             |   |      |       |     | Thin To Thick (Faceted) |           |           |      |                          |   |