

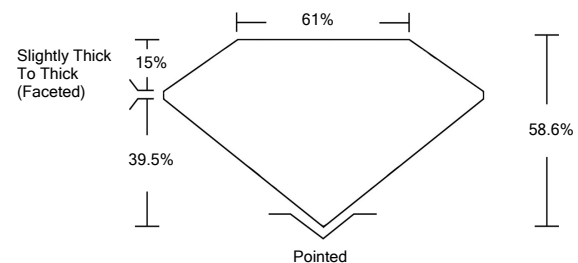


**ELECTRONIC COPY**

**LABORATORY GROWN DIAMOND REPORT**

LG532236532

**PROPORTIONS**



**GRADING SCALES**

|                             |                              |                             |                        |                   |           |   |
|-----------------------------|------------------------------|-----------------------------|------------------------|-------------------|-----------|---|
| COLOR GRADING SCALE         | CL                           | NC                          | FT                     | VL                | LT        |   |
|                             | COLORLESS D-F                | NEAR COLORLESS G-J          | FAINT K-M              | VERY LIGHT N-R    | LIGHT S-Z |   |
| CLARITY (10x) GRADING SCALE | FL                           | IF                          | VVS                    | VS                | SI        | I |
|                             | FLAWLESS INTERNALLY FLAWLESS | VERY VERY SLIGHTLY INCLUDED | VERY SLIGHTLY INCLUDED | SLIGHTLY INCLUDED | INCLUDED  |   |

June 1, 2022

IGI Report Number

**LG532236532**

Description

**LABORATORY GROWN  
DIAMOND**

Shape and Cutting Style

**HEART BRILLIANT**

Measurements

**7.46 X 8.76 X 5.13 MM**

**GRADING RESULTS**

Carat Weight

**2.00 CARATS**

Color Grade

**F**

Clarity Grade

**VS 2**

June 1, 2022

IGI Report Number

**LG532236532**

Description

**LABORATORY GROWN  
DIAMOND**

Shape and Cutting Style

**HEART BRILLIANT**

Measurements

**7.46 X 8.76 X 5.13 MM**

**GRADING RESULTS**

Carat Weight

**2.00 CARATS**

Color Grade

**F**

Clarity Grade

**VS 2**

**ADDITIONAL GRADING INFORMATION**

Polish

**EXCELLENT**

Symmetry

**EXCELLENT**

Fluorescence

**NONE**

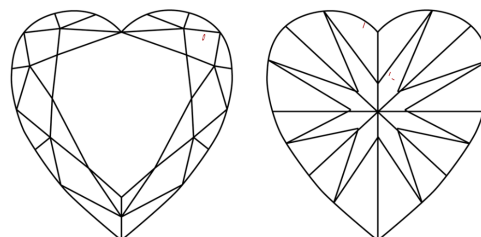
Inscription(s)

**LABGROWN IGI LG532236532**

Comments: This Laboratory Grown Diamond was created by Chemical Vapor Deposition (CVD) growth process and may include post-growth treatment.

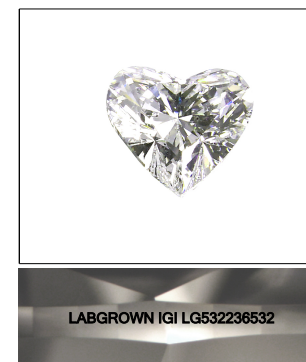
Type IIa

**CLARITY CHARACTERISTICS**



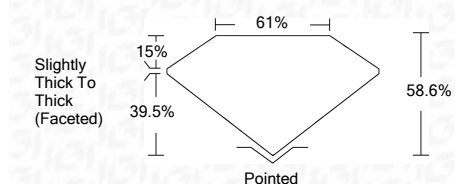
**KEY TO SYMBOLS**

Red symbols indicate internal characteristics.  
Green symbols indicate external characteristics.



**LASERSCRIBE<sup>SM</sup>**

Sample Image Used



**ADDITIONAL GRADING INFORMATION**

Polish

**EXCELLENT**

Symmetry

**EXCELLENT**

Fluorescence

**NONE**

Inscription(s)

**LABGROWN IGI LG532236532**

Comments: This Laboratory Grown Diamond was created by Chemical Vapor Deposition (CVD) growth process and may include post-growth treatment.

Type IIa



**IGI**

|              |                            |                 |                       |             |   |      |       |     |                                   |         |           |           |      |                          |
|--------------|----------------------------|-----------------|-----------------------|-------------|---|------|-------|-----|-----------------------------------|---------|-----------|-----------|------|--------------------------|
| June 1, 2022 | IGI Report No. LG532236532 | HEART BRILLIANT | 7.46 X 8.76 X 5.13 MM | 2.00 CARATS | F | VS 2 | 58.6% | 61% | Slightly Thick To Thick (Faceted) | Pointed | EXCELLENT | EXCELLENT | NONE | LABGROWN IGI LG532236532 |
|              |                            |                 |                       |             |   |      |       |     |                                   |         |           |           |      |                          |

Comments: This Laboratory Grown Diamond was created by Chemical Vapor Deposition (CVD) growth process and may include post-growth treatment. Type IIa