



**ELECTRONIC COPY**

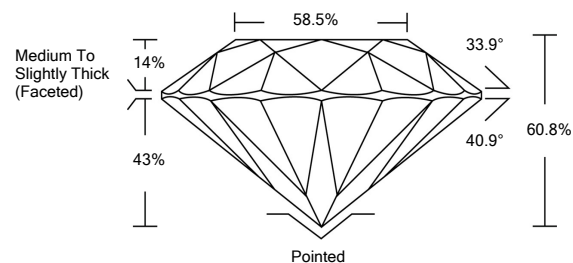
**LABORATORY GROWN DIAMOND REPORT**

LG532239941

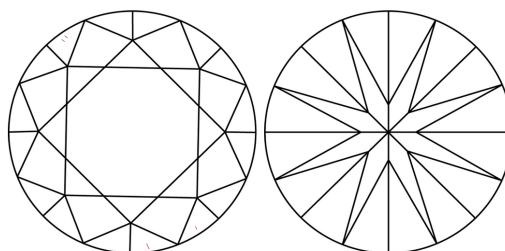
**GRADING SCALES**

COLOR GRADING SCALE	CL	NC	FT	VL	LT	
	COLORLESS D-F	NEAR COLORLESS G-J	FAINT K-M	VERY LIGHT N-R	LIGHT S-Z	
CLARITY (10x) GRADING SCALE	FL	IF	VVS	VS	SI	I
	FLAWLESS INTERNALLY FLAWLESS	VERY VERY SLIGHTLY INCLUDED	VERY SLIGHTLY INCLUDED	SLIGHTLY INCLUDED	INCLUDED	

**PROPORTIONS**

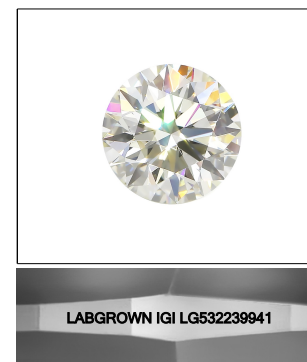


**CLARITY CHARACTERISTICS**



**KEY TO SYMBOLS**

Red symbols indicate internal characteristics.  
Green symbols indicate external characteristics.



LASERSCRIBE<sup>SM</sup>

Sample Image Used

June 3, 2022

IGI Report Number **LG532239941**

Description **LABORATORY GROWN DIAMOND**

Shape and Cutting Style **ROUND BRILLIANT**

Measurements **6.58 - 6.62 X 4.01 MM**

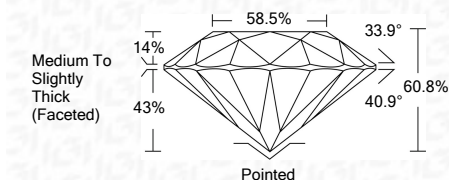
**GRADING RESULTS**

Carat Weight **1.07 CARAT**

Color Grade **E**

Clarity Grade **VVS 2**

Cut Grade **IDEAL**



**ADDITIONAL GRADING INFORMATION**

Polish **EXCELLENT**

Symmetry **EXCELLENT**

Fluorescence **NONE**

Inscription(s) **LABGROWN IGI LG532239941**

Comments: As Grown - No indication of post-growth treatment.  
This Laboratory Grown Diamond was created by High Pressure High Temperature (HPHT) growth process. Type II



**IGI**



June 3, 2022	IGI Report No. LG532239941	1.07 CARAT	E	Pointed
ROUND BRILLIANT	6.58 - 6.62 X 4.01 MM	VVS 2	IDEAL	EXCELLENT
Carat Weight	60.8%	60.8%	58.5%	EXCELLENT
Color Grade	Medium To Slightly Thick (Faceted)			NONE
Clarity Grade				LABGROWN IGI LG532239941
Cut Grade				
Depth				
Table				
Girdle				
Culet				
Polish				
Symmetry				
Fluorescence				
Inscriptions(s)				
Comments:	As Grown - No indication of post-growth treatment. This Laboratory Grown Diamond was created by High Pressure High Temperature (HPHT) growth process. Type II			