



ELECTRONIC COPY

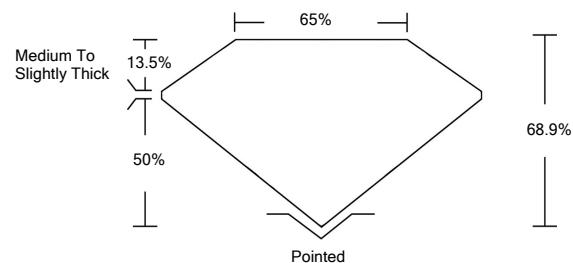
LABORATORY GROWN DIAMOND REPORT

LG532240071

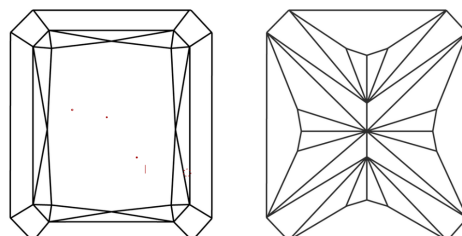
GRADING SCALES

COLOR GRADING SCALE	CL	NC	FT	VL	LT	
	COLORLESS D-F	NEAR COLORLESS G-J	FAINT K-M	VERY LIGHT N-R	LIGHT S-Z	
CLARITY (10x) GRADING SCALE	FL	IF	VVS	VS	SI	I
	FLAWLESS INTERNALLY FLAWLESS	VERY VERY SLIGHTLY INCLUDED	VERY SLIGHTLY INCLUDED	SLIGHTLY INCLUDED	INCLUDED	

PROPORTIONS

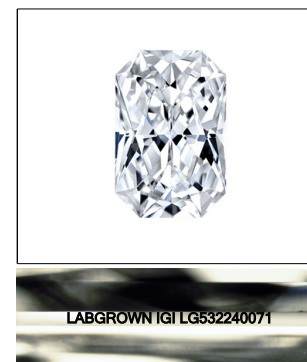


CLARITY CHARACTERISTICS



KEY TO SYMBOLS

Red symbols indicate internal characteristics. Green symbols indicate external characteristics.



LASERSCRIBE<sup>SM</sup>

Sample Image Used

June 4, 2022

IGI Report Number

LG532240071

Description

LABORATORY GROWN DIAMOND

Shape and Cutting Style

CUT CORNERED RECTANGULAR MODIFIED BRILLIANT

Measurements

8.49 X 6.20 X 4.27 MM

GRADING RESULTS

Carat Weight

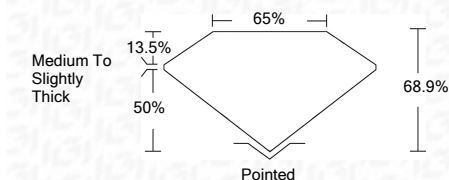
2.00 CARATS

Color Grade

H

Clarity Grade

VS 2



ADDITIONAL GRADING INFORMATION

Polish

EXCELLENT

Symmetry

EXCELLENT

Fluorescence

NONE

Inscription(s)

LABGROWN IGI LG532240071

Comments: This Laboratory Grown Diamond was created by Chemical Vapor Deposition (CVD) growth process and may include post-growth treatment. Type IIa



IGI



IGI Report No. LG532240071	CUT CORNERED RECT. MODIFIED BRILLIANT	8.49 X 6.20 X 4.27 MM	2.00 CARATS	H	VS 2	68.9%	65%	Medium To Slightly Thick	Pointed	EXCELLENT	EXCELLENT	NONE	LABGROWN IGI LG532240071	Comments:
June 4, 2022	Color Grade	Clarity Grade	Depth	Table	Grade	Culet	Polish	Symmetry	Fluorescence	Inscription(s)				This Laboratory Grown Diamond was created by Chemical Vapor Deposition (CVD) growth process and may include post-growth treatment. Type IIa