



**INTERNATIONAL
GEMOLOGICAL
INSTITUTE**

LABORATORY GROWN DIAMOND REPORT

IGI LABORATORY GROWN DIAMOND IDENTIFICATION REPORT

June 4, 2022
 IGI Report Number **LG532248778**
 Description **LABORATORY GROWN DIAMOND**
 Shape and Cutting Style **CUT CORNERED RECTANGULAR
 MODIFIED BRILLIANT**
 Measurements **5.37 X 3.84 X 2.63 MM**

GRADING RESULTS

Carat Weight **0.50 CARAT**
 Color Grade **F**
 Clarity Grade **VVS 2**

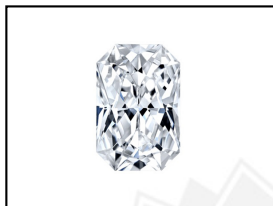
ADDITIONAL GRADING INFORMATION

Polish **EXCELLENT**
 Symmetry **EXCELLENT**
 Fluorescence **NONE**
 Inscription(s) **LABGROWN IGI LG532248778**

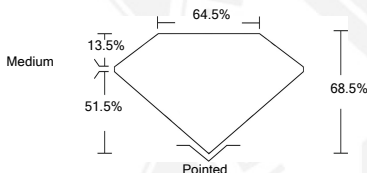
Comments: This Laboratory Grown Diamond was created by Chemical Vapor Deposition (CVD) growth process and may include post-growth treatment.
 Type IIa

**ELECTRONIC COPY LABORATORY GROWN
 DIAMOND REPORT**

LG532248778



LASERSCRIBESM
 Sample Images Used



**IGI LABORATORY GROWN
 DIAMOND ID REPORT**

June 4, 2022
 IGI Report Number **LG532248778**
**CUT CORNERED
 RECTANGULAR MODIFIED
 BRILLIANT**
5.37 X 3.84 X 2.63 MM
 Carat Weight **0.50 CARAT**
 Color Grade **F**
 Clarity Grade **VVS 2**
 Polish **EXCELLENT**
 Symmetry **EXCELLENT**
 Fluorescence **NONE**
 Inscription(s) **LABGROWN IGI
 LG532248778**

Comments: This Laboratory Grown Diamond was created by Chemical Vapor Deposition (CVD) growth process and may include post-growth treatment.
 Type IIa

**IGI LABORATORY GROWN
 DIAMOND ID REPORT**

June 4, 2022
 IGI Report Number **LG532248778**
**CUT CORNERED
 RECTANGULAR MODIFIED
 BRILLIANT**
5.37 X 3.84 X 2.63 MM
 Carat Weight **0.50 CARAT**
 Color Grade **F**
 Clarity Grade **VVS 2**
 Polish **EXCELLENT**
 Symmetry **EXCELLENT**
 Fluorescence **NONE**
 Inscription(s) **LABGROWN IGI
 LG532248778**

Comments: This Laboratory Grown Diamond was created by Chemical Vapor Deposition (CVD) growth process and may include post-growth treatment.
 Type IIa

THIS DOCUMENT WAS PRODUCED WITH THE FOLLOWING SECURITY MEASURES: SPECIAL DOCUMENT PAPER, INK SCREENS, WATERMARK, BACKGROUND DESIGN, HOLOGRAM AND OTHER SECURITY FEATURES NOT LISTED AND DO EXCEED DOCUMENT SECURITY INDUSTRY GUIDELINES.

For terms & conditions and to verify this report, please visit www.igi.org