



**INTERNATIONAL
GEMOLOGICAL
INSTITUTE**

LABORATORY GROWN DIAMOND REPORT

IGI LABORATORY GROWN DIAMOND IDENTIFICATION REPORT

June 4, 2022
 IGI Report Number LG532248780
 Description LABORATORY GROWN DIAMOND
 Shape and Cutting Style CUT CORNERED RECTANGULAR
 MODIFIED BRILLIANT
 Measurements 5.40 X 3.96 X 2.73 MM

GRADING RESULTS

Carat Weight 0.52 CARAT
 Color Grade F
 Clarity Grade VVS 2

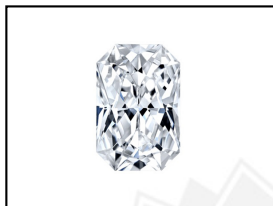
ADDITIONAL GRADING INFORMATION

Polish EXCELLENT
 Symmetry EXCELLENT
 Fluorescence NONE
 Inscription(s) LABGROWN IGI LG532248780

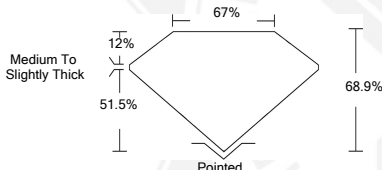
Comments: This Laboratory Grown Diamond was created by Chemical Vapor Deposition (CVD) growth process and may include post-growth treatment.
 Type IIa

**ELECTRONIC COPY LABORATORY GROWN
DIAMOND REPORT**

LG532248780



LASERSCRIBESM
Sample Images Used



**IGI LABORATORY GROWN
DIAMOND ID REPORT**

June 4, 2022
 IGI Report Number **LG532248780**
**CUT CORNERED
RECTANGULAR MODIFIED
BRILLIANT**
5.40 X 3.96 X 2.73 MM
 Carat Weight 0.52 CARAT
 Color Grade F
 Clarity Grade VVS 2
 Polish EXCELLENT
 Symmetry EXCELLENT
 Fluorescence NONE
 Inscription(s) LABGROWN IGI
 LG532248780

Comments: This Laboratory Grown Diamond was created by Chemical Vapor Deposition (CVD) growth process and may include post-growth treatment.
 Type IIa

**IGI LABORATORY GROWN
DIAMOND ID REPORT**

June 4, 2022
 IGI Report Number **LG532248780**
**CUT CORNERED
RECTANGULAR MODIFIED
BRILLIANT**
5.40 X 3.96 X 2.73 MM
 Carat Weight 0.52 CARAT
 Color Grade F
 Clarity Grade VVS 2
 Polish EXCELLENT
 Symmetry EXCELLENT
 Fluorescence NONE
 Inscription(s) LABGROWN IGI
 LG532248780

Comments: This Laboratory Grown Diamond was created by Chemical Vapor Deposition (CVD) growth process and may include post-growth treatment.
 Type IIa

THIS DOCUMENT WAS PRODUCED WITH THE FOLLOWING SECURITY MEASURES: SPECIAL DOCUMENT PAPER, INK SCREENS, WATERMARK, BACKGROUND DESIGN, HOLOGRAM AND OTHER SECURITY FEATURES NOT LISTED AND DO EXCEED DOCUMENT SECURITY INDUSTRY GUIDELINES.

For terms & conditions and to verify this report, please visit www.igi.org