



ELECTRONIC COPY

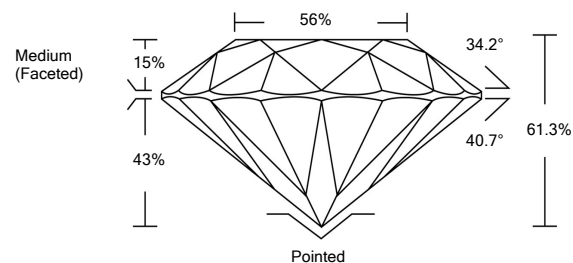
LABORATORY GROWN DIAMOND REPORT

LG532250979

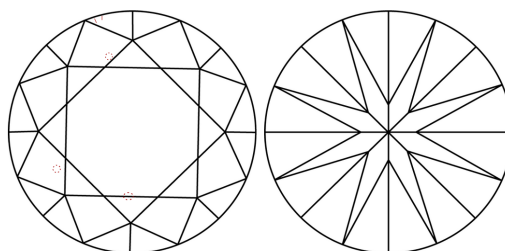
GRADING SCALES

COLOR GRADING SCALE	CL	NC	FT	VL	LT
	COLORLESS D-F	NEAR COLORLESS G-J	FAINT K-M	VERY LIGHT N-R	LIGHT S-Z
CLARITY (10x) GRADING SCALE	FL	VVS	VS	SI	I
	FLAWLESS INTERNALLY FLAWLESS	VERY VERY SLIGHTLY INCLUDED	VERY SLIGHTLY INCLUDED	SLIGHTLY INCLUDED	INCLUDED

PROPORTIONS

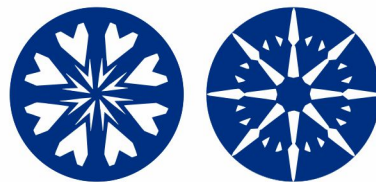


CLARITY CHARACTERISTICS

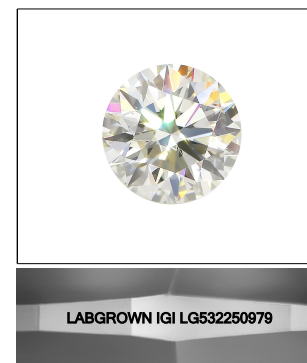


KEY TO SYMBOLS

Red symbols indicate internal characteristics. Green symbols indicate external characteristics.



www.igi.org



LASERSCRIBE SM Sample Image Used

May 31, 2022

IGI Report Number

LG532250979

Description

LABORATORY GROWN DIAMOND

Shape and Cutting Style

ROUND BRILLIANT

Measurements

6.72 - 6.76 X 4.13 MM

GRADING RESULTS

Carat Weight

1.15 CARAT

Color Grade

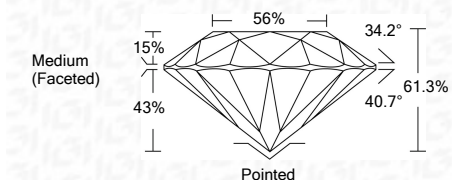
D

Clarity Grade

VVS 2

Cut Grade

IDEAL



ADDITIONAL GRADING INFORMATION

Polish

EXCELLENT

Symmetry

EXCELLENT

Fluorescence

NONE

Inscription(s)

LABGROWN IGI LG532250979

Comments: HEARTS & ARROWS

As Grown - No indication of post-growth treatment. This Laboratory Grown Diamond was created by High Pressure High Temperature (HPHT) growth process. Type II



IGI

May 31, 2022

IGI Report No. LG532250979

ROUND BRILLIANT

6.72 - 6.76 X 4.13 MM

Carat Weight

1.15 CARAT

Color Grade

D

Clarity Grade

VVS 2

Cut Grade

IDEAL

Depth

61.3%

Table

56%

Girdle

Medium (Faceted)

Culet

Pointed

Polish

EXCELLENT

Symmetry

EXCELLENT

Fluorescence

NONE

Inscription(s)

LABGROWN IGI LG532250979

Comments:

HEARTS & ARROWS As Grown - No indication of post-growth treatment. This Laboratory Grown Diamond was created by High Pressure High Temperature (HPHT) growth process. Type II

