



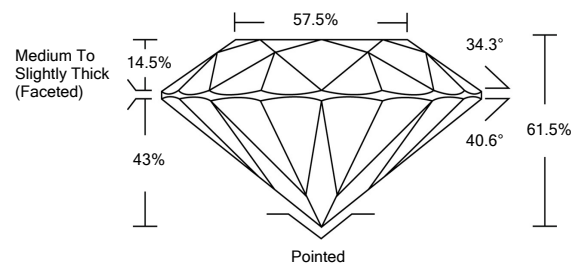
ELECTRONIC COPY

LG532256460

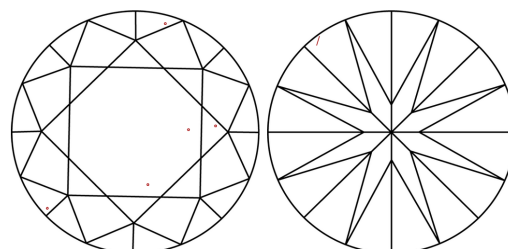
GRADING SCALES

COLOR GRADING SCALE	CL	NC	FT	VL	LT	
	COLORLESS D-F	NEAR COLORLESS G-J	FAINT K-M	VERY LIGHT N-R	LIGHT S-Z	
CLARITY (10x) GRADING SCALE	FL	IF	VVS	VS	SI	I
	FLAWLESS INTERNALLY FLAWLESS	VERY VERY SLIGHTLY INCLUDED	VERY SLIGHTLY INCLUDED	SLIGHTLY INCLUDED	INCLUDED	INCLUDED

PROPORTIONS

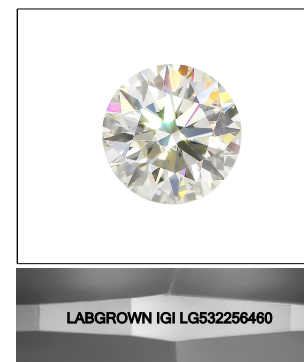


CLARITY CHARACTERISTICS



KEY TO SYMBOLS

Red symbols indicate internal characteristics. Green symbols indicate external characteristics.



LASERSCRIBE<sup>SM</sup> Sample Image Used

June 2, 2022

IGI Report Number **LG532256460**

Description **LABORATORY GROWN DIAMOND**

Shape and Cutting Style **ROUND BRILLIANT**

Measurements **8.76 - 8.80 X 5.40 MM**

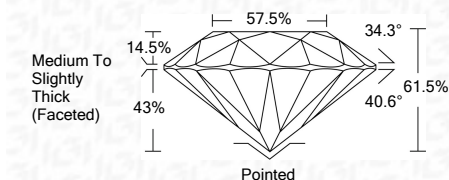
GRADING RESULTS

Carat Weight **2.60 CARATS**

Color Grade **I**

Clarity Grade **VS 1**

Cut Grade **IDEAL**



ADDITIONAL GRADING INFORMATION

Polish **EXCELLENT**

Symmetry **EXCELLENT**

Fluorescence **NONE**

Inscription(s) **LABGROWN IGI LG532256460**

Comments: This Laboratory Grown Diamond was created by Chemical Vapor Deposition (CVD) growth process and may include post-growth treatment. Type IIa



IGI Report No. LG532256460	2.60 CARATS	I	Pointed
ROUND BRILLIANT	8.76 - 8.80 X 5.40 MM	VS 1	EXCELLENT
Color Grade	8.76 - 8.80 X 5.40 MM	IDEAL	EXCELLENT
Carat Weight	2.60 CARATS	61.5%	NONE
Color Grade	I	57.5%	LABGROWN IGI LG532256460
Clarity Grade	VS 1	Medium To Slightly Thick (Faceted)	
Cut Grade	IDEAL		
Depth	61.5%		
Table	57.5%		
Girdle	Medium To Slightly Thick (Faceted)		
Culet	Pointed		
Polish	EXCELLENT		
Symmetry	EXCELLENT		
Fluorescence	NONE		
Inscriptions(s)	LABGROWN IGI LG532256460		

