

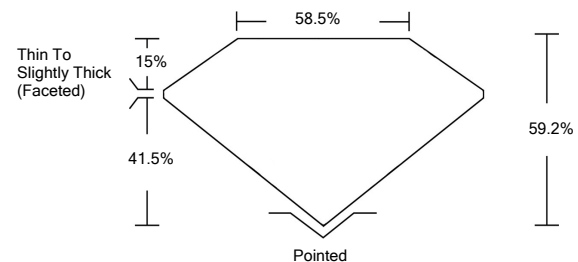


**ELECTRONIC COPY**

**LABORATORY GROWN DIAMOND REPORT**

LG532256761

**PROPORTIONS**



**GRADING SCALES**

COLOR GRADING SCALE	CL	NC	FT	VL	LT	
	COLORLESS D-F	NEAR COLORLESS G-J	FAINT K-M	VERY LIGHT N-R	LIGHT S-Z	
CLARITY (10x) GRADING SCALE	FL	IF	VVS	VS	SI	I
	FLAWLESS INTERNALLY FLAWLESS	VERY VERY SLIGHTLY INCLUDED	VERY SLIGHTLY INCLUDED	SLIGHTLY INCLUDED	INCLUDED	

June 2, 2022

IGI Report Number

**LG532256761**

Description

**LABORATORY GROWN  
DIAMOND**

Shape and Cutting Style

**HEART BRILLIANT**

Measurements

**8.78 X 9.73 X 5.76 MM**

**GRADING RESULTS**

Carat Weight

**2.71 CARATS**

Color Grade

**E**

Clarity Grade

**VS 1**

June 2, 2022

IGI Report Number

**LG532256761**

Description

**LABORATORY GROWN  
DIAMOND**

Shape and Cutting Style

**HEART BRILLIANT**

Measurements

**8.78 X 9.73 X 5.76 MM**

**GRADING RESULTS**

Carat Weight

**2.71 CARATS**

Color Grade

**E**

Clarity Grade

**VS 1**

**ADDITIONAL GRADING INFORMATION**

Polish

**EXCELLENT**

Symmetry

**EXCELLENT**

Fluorescence

**NONE**

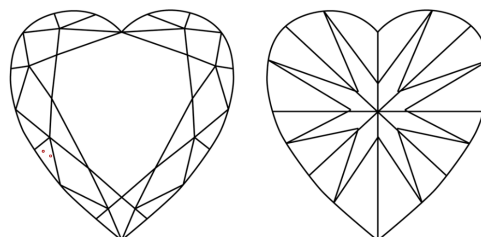
Inscription(s)

**LABGROWN IGI LG532256761**

Comments: This Laboratory Grown Diamond was created by Chemical Vapor Deposition (CVD) growth process and may include post-growth treatment.

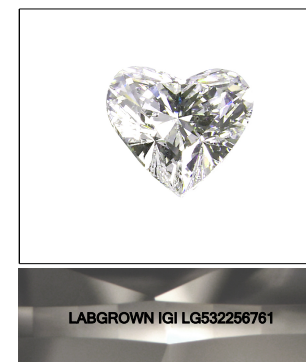
Type IIa

**CLARITY CHARACTERISTICS**



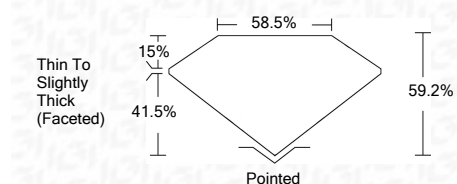
**KEY TO SYMBOLS**

Red symbols indicate internal characteristics.  
Green symbols indicate external characteristics.



**LASERSCRIBE<sup>SM</sup>**

Sample Image Used



**ADDITIONAL GRADING INFORMATION**

Polish

**EXCELLENT**

Symmetry

**EXCELLENT**

Fluorescence

**NONE**

Inscription(s)

**LABGROWN IGI LG532256761**

Comments: This Laboratory Grown Diamond was created by Chemical Vapor Deposition (CVD) growth process and may include post-growth treatment.

Type IIa



**IGI**

June 2, 2022	IGI Report No. LG532256761	HEART BRILLIANT	8.78 X 9.73 X 5.76 MM	2.71 CARATS	E	VS 1	58.5%	41.5%	Thin To Slightly Thick (Faceted)	Pointed	EXCELLENT	EXCELLENT	NONE	LABGROWN IGI LG532256761

This Laboratory Grown Diamond was created by Chemical Vapor Deposition (CVD) growth process and may include post-growth treatment.  
Type IIa