



ELECTRONIC COPY

LG532259613

LABORATORY GROWN DIAMOND REPORT

June 6, 2022
IGI Report Number **LG532259613**
Description **LABORATORY GROWN
DIAMOND**
Shape and Cutting Style **ROUND BRILLIANT**
Measurements **7.63 - 7.66 X 4.64 MM**

GRADING RESULTS

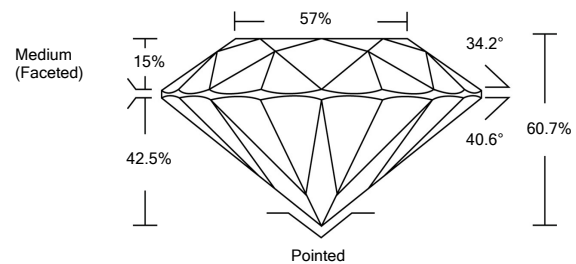
Carat Weight **1.66 CARAT**
Color Grade **D**
Clarity Grade **SI 2**
Cut Grade **IDEAL**

ADDITIONAL GRADING INFORMATION

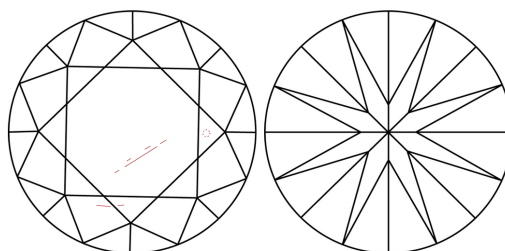
Polish **EXCELLENT**
Symmetry **EXCELLENT**
Fluorescence **NONE**
Inscription(s) **LABGROWN IGI LG532259613**

Comments: As Grown - No indication of post-growth treatment. This Laboratory Grown Diamond was created by High Pressure High Temperature (HPHT) growth process. Type II

PROPORTIONS



CLARITY CHARACTERISTICS

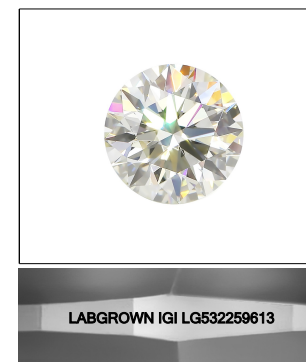


KEY TO SYMBOLS

Red symbols indicate internal characteristics.
Green symbols indicate external characteristics.

GRADING SCALES

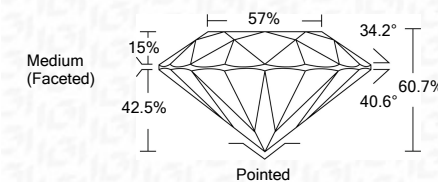
COLOR GRADING SCALE	CL	NC	FT	VLT	LT	
	COLORLESS D-F	NEAR COLORLESS G-J	FAINT K-M	VERY LIGHT N-R	LIGHT S-Z	
CLARITY (10x) GRADING SCALE	FL	IF	VVS	VS	SI	I
	FLAWLESS INTERNALLY FLAWLESS	VERY VERY SLIGHTLY INCLUDED	VERY SLIGHTLY INCLUDED	SLIGHTLY INCLUDED	INCLUDED	



LASERSCRIBESM

Sample Image Used

June 6, 2022
IGI Report Number **LG532259613**
Description **LABORATORY GROWN
DIAMOND**
Shape and Cutting Style **ROUND BRILLIANT**
Measurements **7.63 - 7.66 X 4.64 MM**
GRADING RESULTS
Carat Weight **1.66 CARAT**
Color Grade **D**
Clarity Grade **SI 2**
Cut Grade **IDEAL**



ADDITIONAL GRADING INFORMATION

Polish **EXCELLENT**
Symmetry **EXCELLENT**
Fluorescence **NONE**
Inscription(s) **LABGROWN IGI LG532259613**

Comments: As Grown - No indication of post-growth treatment. This Laboratory Grown Diamond was created by High Pressure High Temperature (HPHT) growth process. Type II



IGI



June 6, 2022	IGI Report No. LG532259613	1.66 CARAT	D	Pointed	EXCELLENT	EXCELLENT	LABGROWN IGI LG532259613	As Grown - No indication of post-growth treatment. This Laboratory Grown Diamond was created by High Pressure High Temperature (HPHT) growth process. Type II
ROUND BRILLIANT	7.63 - 7.66 X 4.64 MM	Color Grade	SI 2	Cut	IDEAL	FLAWLESS INTERNALLY FLAWLESS	None	
Carat Weight		Clarity Grade	60.7%	Polish	57%	VERY VERY SLIGHTLY INCLUDED	None	
		Cut Grade	Medium (Faceted)	Symmetry		VERY SLIGHTLY INCLUDED	None	
		Depth		Fluorescence		SLIGHTLY INCLUDED	None	
		Table		Inscription(s)		INCLUDED	None	
		Girdle					None	