



ELECTRONIC COPY

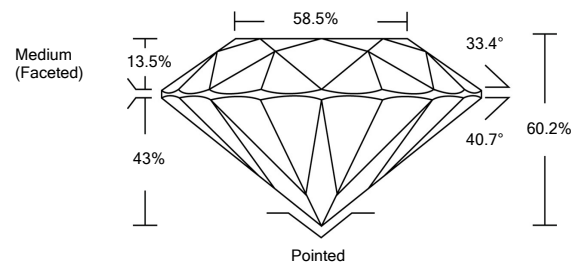
LABORATORY GROWN DIAMOND REPORT

LG532259663

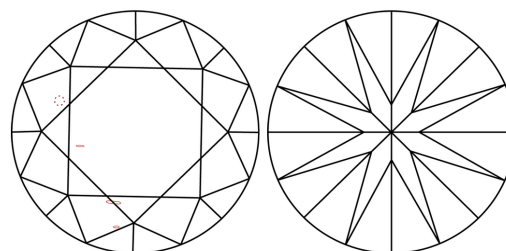
GRADING SCALES

COLOR GRADING SCALE	CL	NC	FT	VL	LT	
	COLORLESS D-F	NEAR COLORLESS G-J	FAINT K-M	VERY LIGHT N-R	LIGHT S-Z	
CLARITY (10x) GRADING SCALE	FL	IF	VVS	VS	SI	I
	FLAWLESS INTERNALLY FLAWLESS	VERY VERY SLIGHTLY INCLUDED	VERY SLIGHTLY INCLUDED	SLIGHTLY INCLUDED	INCLUDED	

PROPORTIONS

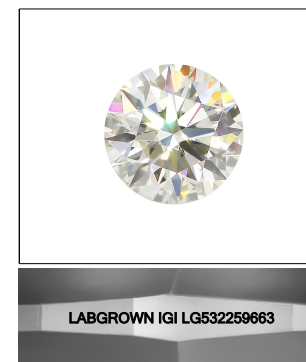


CLARITY CHARACTERISTICS



KEY TO SYMBOLS

Red symbols indicate internal characteristics.
Green symbols indicate external characteristics.



LASERSCRIBESM
Sample Image Used

June 2, 2022

IGI Report Number **LG532259663**

Description **LABORATORY GROWN DIAMOND**

Shape and Cutting Style **ROUND BRILLIANT**

Measurements **6.99 - 7.02 X 4.22 MM**

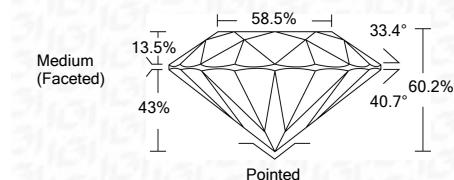
GRADING RESULTS

Carat Weight **1.27 CARAT**

Color Grade **D**

Clarity Grade **VS 2**

Cut Grade **IDEAL**



ADDITIONAL GRADING INFORMATION

Polish **EXCELLENT**

Symmetry **EXCELLENT**

Fluorescence **NONE**

Inscription(s) **LABGROWN IGI LG532259663**

Comments: As Grown - No indication of post-growth treatment.
This Laboratory Grown Diamond was created by High Pressure High Temperature (HPHT) growth process.
Type II



IGI



IGI Report No. LG532259663	1.27 CARAT	D	Pointed
ROUND BRILLIANT	VS 2	EXCELLENT	EXCELLENT
6.99 - 7.02 X 4.22 MM	IDEAL	EXCELLENT	EXCELLENT
Carat Weight	60.2%	NONE	NONE
Color Grade	58.5%	LABGROWN IGI	LABGROWN IGI
Clarity Grade	Medium (Faceted)	LG532259663	LG532259663
Cut Grade			
Depth			
Table			
Girdle			
Culet			
Polish			
Symmetry			
Fluorescence			
Inscriptions(s)			
Comments:			
As Grown - No indication of post-growth treatment.			
This Laboratory Grown Diamond was created by High Pressure High Temperature (HPHT) growth process.			
Type II			