



**ELECTRONIC COPY**

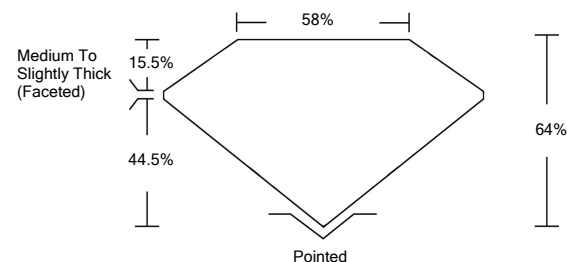
**LABORATORY GROWN DIAMOND REPORT**

LG532259688

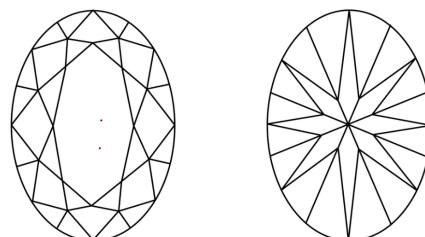
**GRADING SCALES**

COLOR GRADING SCALE	CL	NC	FT	VL	LT	
	COLORLESS D-F	NEAR COLORLESS G-J	FAINT K-M	VERY LIGHT N-R	LIGHT S-Z	
CLARITY (10x) GRADING SCALE	FL	IF	VVS	VS	SI	I
	FLAWLESS INTERNALLY FLAWLESS	VERY VERY SLIGHTLY INCLUDED	VERY SLIGHTLY INCLUDED	SLIGHTLY INCLUDED	INCLUDED	

**PROPORTIONS**

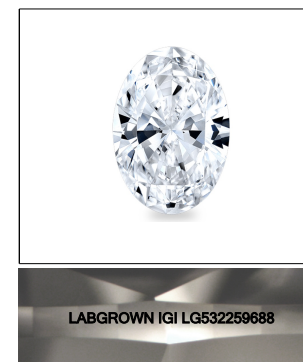


**CLARITY CHARACTERISTICS**



**KEY TO SYMBOLS**

Red symbols indicate internal characteristics.  
Green symbols indicate external characteristics.



**LASERSCRIBE<sup>SM</sup>**  
Sample Image Used

June 3, 2022

IGI Report Number **LG532259688**

Description **LABORATORY GROWN DIAMOND**

Shape and Cutting Style **OVAL BRILLIANT**

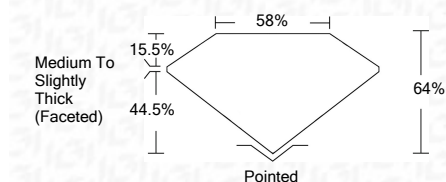
Measurements **8.98 X 6.61 X 4.23 MM**

**GRADING RESULTS**

Carat Weight **1.56 CARAT**

Color Grade **H**

Clarity Grade **VS 1**



**ADDITIONAL GRADING INFORMATION**

Polish **EXCELLENT**

Symmetry **EXCELLENT**

Fluorescence **NONE**

Inscription(s) **LABGROWN IGI LG532259688**

Comments: This Laboratory Grown Diamond was created by Chemical Vapor Deposition (CVD) growth process and may include post-growth treatment.  
Type IIa

June 3, 2022

IGI Report Number **LG532259688**

Description **LABORATORY GROWN DIAMOND**

Shape and Cutting Style **OVAL BRILLIANT**

Measurements **8.98 X 6.61 X 4.23 MM**

**GRADING RESULTS**

Carat Weight **1.56 CARAT**

Color Grade **H**

Clarity Grade **VS 1**

**ADDITIONAL GRADING INFORMATION**

Polish **EXCELLENT**

Symmetry **EXCELLENT**

Fluorescence **NONE**

Inscription(s) **LABGROWN IGI LG532259688**

Comments: This Laboratory Grown Diamond was created by Chemical Vapor Deposition (CVD) growth process and may include post-growth treatment.  
Type IIa



**IGI**



IGI Report No. LG532259688	1.56 CARAT	H	VS 1	64%	58%	Pointed	EXCELLENT	EXCELLENT	NONE	LABGROWN IGI LG532259688	Comments:
IGI Report No. LG532259688	8.98 X 6.61 X 4.23 MM	1.56 CARAT	VS 1	64%	58%	Medium To Slightly Thick (Faceted)	EXCELLENT	EXCELLENT	NONE	LABGROWN IGI LG532259688	This Laboratory Grown Diamond was created by Chemical Vapor Deposition (CVD) growth process and may include post-growth treatment. Type IIa
IGI Report No. LG532259688	8.98 X 6.61 X 4.23 MM	1.56 CARAT	VS 1	64%	58%	Medium To Slightly Thick (Faceted)	EXCELLENT	EXCELLENT	NONE	LABGROWN IGI LG532259688	This Laboratory Grown Diamond was created by Chemical Vapor Deposition (CVD) growth process and may include post-growth treatment. Type IIa