



ELECTRONIC COPY

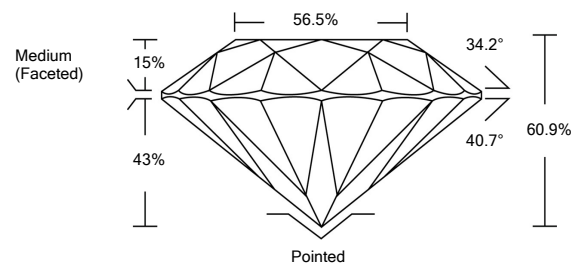
LABORATORY GROWN DIAMOND REPORT

LG532261079

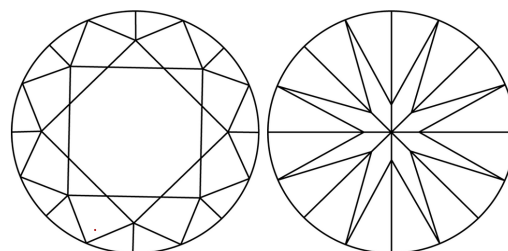
GRADING SCALES

COLOR GRADING SCALE	CL	NC	FT	VL	LT
	COLORLESS D-F	NEAR COLORLESS G-J	FAINT K-M	VERY LIGHT N-R	LIGHT S-Z
CLARITY (10x) GRADING SCALE	FL	VVS	VS	SI	I
	FLAWLESS INTERNALLY FLAWLESS	VERY VERY SLIGHTLY INCLUDED	VERY SLIGHTLY INCLUDED	SLIGHTLY INCLUDED	INCLUDED

PROPORTIONS

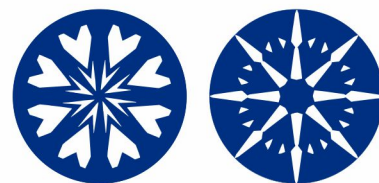


CLARITY CHARACTERISTICS

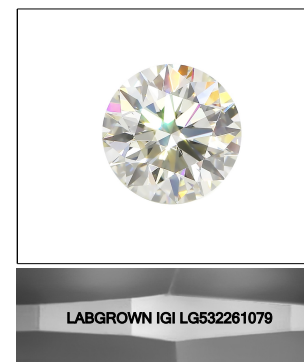


KEY TO SYMBOLS

Red symbols indicate internal characteristics. Green symbols indicate external characteristics.



www.igi.org



LASERSCRIBESM

Sample Image Used

June 4, 2022

IGI Report Number

LG532261079

Description

LABORATORY GROWN DIAMOND

Shape and Cutting Style

ROUND BRILLIANT

Measurements

8.00 - 8.03 X 4.88 MM

GRADING RESULTS

Carat Weight

1.91 CARAT

Color Grade

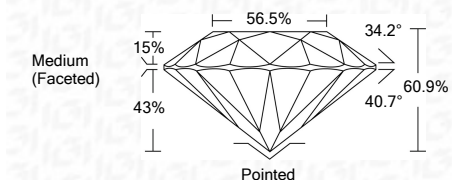
D

Clarity Grade

VVS 1

Cut Grade

IDEAL



ADDITIONAL GRADING INFORMATION

Polish

EXCELLENT

Symmetry

EXCELLENT

Fluorescence

NONE

Inscription(s)

LABGROWN IGI LG532261079

Comments: HEARTS & ARROWS

As Grown - No indication of post-growth treatment. This Laboratory Grown Diamond was created by High Pressure High Temperature (HPHT) growth process. Type II



IGI

IGI Report No. LG532261079	1.91 CARAT	D	Pointed
ROUND BRILLIANT	VVS 1	EXCELLENT	EXCELLENT
8.00 - 8.03 X 4.88 MM	IDEAL	EXCELLENT	EXCELLENT
Carat Weight	60.9%	NONE	LABGROWN IGI LG532261079
Color Grade	56.5%		
Clarity Grade	Medium (Faceted)		
Cut Grade			
Depth			
Table			
Girdle			
Culet			
Polish			
Symmetry			
Fluorescence			
Inscription(s)			