



**INTERNATIONAL  
GEMOLOGICAL  
INSTITUTE**

**ELECTRONIC COPY LABORATORY GROWN  
DIAMOND REPORT**

**IGI LABORATORY GROWN  
DIAMOND ID REPORT**

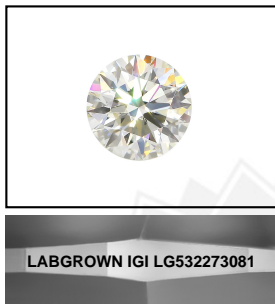
**LABORATORY GROWN DIAMOND REPORT**

**LG532273081**

June 6, 2022  
IGI Report Number **LG532273081**  
**ROUND BRILLIANT**  
**4.39 - 4.42 X 2.63 MM**  
Carat Weight 0.31 CARAT  
Color Grade D  
Clarity Grade VVS 1  
Cut Grade EXCELLENT  
Polish EXCELLENT  
Symmetry EXCELLENT  
Fluorescence NONE  
Inscription(s) LABGROWN IGI  
LG532273081

**IGI LABORATORY GROWN DIAMOND IDENTIFICATION REPORT**

June 6, 2022  
IGI Report Number LG532273081  
Description LABORATORY GROWN DIAMOND  
Shape and Cutting Style ROUND BRILLIANT  
Measurements 2.63 - 4.42 X 4.39 MM



Comments: This Laboratory Grown Diamond was created by Chemical Vapor Deposition (CVD) growth process and may include post-growth treatment.  
Type Ila

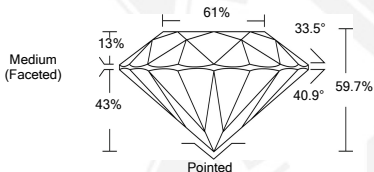
**GRADING RESULTS**

Carat Weight 0.31 CARAT  
Color Grade D  
Clarity Grade VVS 1  
Cut Grade EXCELLENT

**ADDITIONAL GRADING INFORMATION**

Polish EXCELLENT  
Symmetry EXCELLENT  
Fluorescence NONE  
Inscription(s) LABGROWN IGI LG532273081  
Comments: This Laboratory Grown Diamond was created by Chemical Vapor Deposition (CVD) growth process and may include post-growth treatment.  
Type Ila

**LASERSCRIBE<sup>SM</sup>**  
Sample Images Used



**IGI LABORATORY GROWN  
DIAMOND ID REPORT**

June 6, 2022  
IGI Report Number **LG532273081**  
**ROUND BRILLIANT**  
**4.39 - 4.42 X 2.63 MM**  
Carat Weight 0.31 CARAT  
Color Grade D  
Clarity Grade VVS 1  
Cut Grade EXCELLENT  
Polish EXCELLENT  
Symmetry EXCELLENT  
Fluorescence NONE  
Inscription(s) LABGROWN IGI  
LG532273081

Comments: This Laboratory Grown Diamond was created by Chemical Vapor Deposition (CVD) growth process and may include post-growth treatment.  
Type Ila

THIS DOCUMENT WAS PRODUCED WITH THE FOLLOWING SECURITY MEASURES: SPECIAL DOCUMENT PAPER, INK SCREENS, WATERMARK, BACKGROUND DESIGN, HOLOGRAM AND OTHER SECURITY FEATURES NOT LISTED AND DO EXCEED DOCUMENT SECURITY INDUSTRY GUIDELINES.

For terms & conditions and to verify this report, please visit [www.igi.org](http://www.igi.org)